

**PRODUCT SPECIFICATIONS**

Enhanced Bottle Filler & Single ADA Cooler Refrigerated Light Gray Granite High Capacity Lead Drop Down Wrapper. Chilling Capacity of 8.0 GPH (gallons per hour) of 50° F drinking water, based on 80° F inlet water and 90° F ambient, per ASHRAE 18 testing. Features shall include Antimicrobial\*, Automatic Filter Status Reset, Energy Savings, Filtered, Hands Free, Laminar Flow, Visual Filter Monitor, Green Ticker™, Quick Filter Change, Alcove Light. Furnished with Flexi-Guard® Safety Bubbler. Electronic Bottle Filler Sensor with Electronic Front and Side Bubbler Pushbar activation. Product shall be Wall Mount (On Wall), for Indoor applications, serving 1 station(s). Unit shall be certified to UL 399 and CAN/CSA C22.2 No. 120.



<b>Special Features:</b>	Antimicrobial, Automatic Filter Status Reset, Energy Savings, Filtered, Hands Free, Laminar Flow, Visual Filter Monitor, Green Ticker™, Quick Filter Change, Alcove Light
<b>Finish:</b>	Light Gray Granite (L)
<b>Power:</b>	115V/60Hz
<b>Bubbler Style:</b>	Flexi-Guard® Safety Bubbler
<b>Activation by:</b>	Electronic Bottle Filler Sensor with Electronic Front and Side Bubbler Pushbar
<b>Mounting Type:</b>	Wall Mount (On Wall)
<b>Chilling Capacity*:</b>	8.0 GPH
<b>Full Load Amps</b>	5
<b>Rated Watts:</b>	370
<b>Dimensions (L x W x H):</b>	18-3/8" x 19" x 39-7/16"
<b>Approx. Shipping Weight:</b>	85 lbs.
<b>Installation Location:</b>	Indoor
<b>No. of Stations Served:</b>	1
*Based on 80° F inlet water & 90° F ambient air temp for 50° F chilled drinking water.	

**Special Note: Retrofit accessory, plumbSMART Gateway, and Account required for cloud connection.**

**COOLING SYSTEM**

- Compressor: Hermetically-sealed, reciprocating type, single phase. Sealed-in lifetime lubrication.
- Condenser: Fan cooled, copper tube with aluminum fins. Fan motor is permanently lubricated.
- Cooling Unit: Combination tube-tank type. Continuous copper tubing with is fully insulated with EPS foam that meets UL requirements for self-extinguishing material.
- Refrigerant Control: Refrigerant R-134a is controlled by accurately calibrated capillary tube.
- Temperature Control: Easily accessible enclosed adjustable thermostat is factory preset. Requires no adjustment other than for altitude requirements.

**Additional Finishes:** Arctic White (A)  
Midnight Black (M)  
Stainless Steel (S)

**Included with Product:** Bottle Filler,  
Water Cooler,  
Filter

**Ships in one box.**  
A Century of Tradition and Quality. For more than 100 years, Elkay has been making innovative products and providing exceptional customer care. We take pride in offering plumbing products that make life easier, inspire change and leave the world a better place.

**PRODUCT COMPLIANCE**

- ADA & ICC A117.1
- ASME A112.19.3/CSA B45.4
- CAN/CSA C22.2 No. 120
- FCC & ISED
- GreenSpec®
- NSF/ANSI 42, 53, 61 (Q≤1), 372 (lead free), & 401
- UL 399



This Zurn Elkay product has a certified Environmental Product Declaration (EPD) that complies with an independently verified life cycle assessment (LCA). Visit [Product Declarations and Certifications](#) for more information.

Complies with ADA & ICC A117.1 accessibility requirements when installed according to the requirements outlined in these standards. Installation may require additional components and/or construction features to be fully compliant. Consult the local Authority Having Jurisdiction if necessary.

[Installation Instructions \(PDF\) - 200002526](#)

**5 Year Limited Warranty** on the refrigeration system of the unit. Electrical components and water system are warranted for 12 months from date of installation. **Warranty pertains to drinking water applications only. Non-drinking water applications are not covered under warranty.**





[Warranty \(PDF\)](#)

PART: \_\_\_\_\_ QTY: \_\_\_\_\_  
 PROJECT: \_\_\_\_\_  
 CONTACT: \_\_\_\_\_  
 DATE: \_\_\_\_\_  
 NOTES: \_\_\_\_\_ APP  
 ROVAL: \_\_\_\_\_

*In keeping with our policy of continuing product improvement, Elkay reserves the right to change product specifications without notice. Please visit [elkay.com](#) for the most current version of Elkay product specification sheets. This specification describes an Elkay product with design, quality, and functional benefits to the user. When making a comparison of other producers' offerings, be certain these features are not overlooked.*



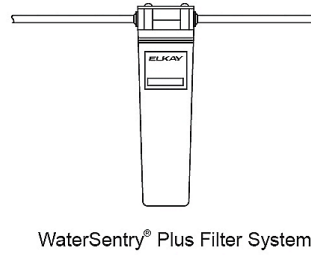
Features	
<ul style="list-style-type: none"> <li>Drop-down wrapper provides easy access to filter from front and side of cooler for convenient and efficient filter change in under a minute</li> </ul>	<ul style="list-style-type: none"> <li>The included 6,000-gallon filter is tested and certified to NSF 42, 53 and 401 for lead, microplastics, Class 1 particulate, chlorine taste and odor reduction</li> </ul>
<ul style="list-style-type: none"> <li>Touchless, sensor activation (bottle filler) designed for easy use; easy-to-operate push-bar activation (bubbler)</li> </ul>	<ul style="list-style-type: none"> <li>Hermetically sealed refrigeration system provides chilled water</li> </ul>
<ul style="list-style-type: none"> <li>Fill rate is 1.1 GPM. Laminar flow provides clean fill with minimal splash. Real drain system eliminates standing water</li> </ul>	<ul style="list-style-type: none"> <li>Visual filter monitor with LED filter status indicator for when filter change is necessary</li> </ul>
<ul style="list-style-type: none"> <li>System automatically recognizes new filter and updates LED lights back to blue</li> </ul>	<ul style="list-style-type: none"> <li>Green Ticker™ informs user of number of 20 oz. plastic water bottles saved from waste</li> </ul>
<ul style="list-style-type: none"> <li>Key plastic components are manufactured with silver ion antimicrobial agent helping to provide clean, stain- and odor-free surfaces</li> </ul>	<ul style="list-style-type: none"> <li>Low-energy LED light encourages use, assists with filling dark bottles and illuminates in dark hallways</li> </ul>
<ul style="list-style-type: none"> <li>One-box packaging so the cooler and bottle filler ship together</li> </ul>	<ul style="list-style-type: none"> <li>Connected-ready; use our retrofit accessory to set up wireless monitoring, track water usage and more. Accessory sold separately</li> </ul>
	<p>*Antimicrobial claims are in reference to components manufactured antimicrobial agents, helping to provide clean, stain- and odor-free surfaces.</p>

Optional Accessories		
<a href="#">51600C</a>	WaterSentry® Lead + Microplastics NSF/ANSI Certified 6000 Gal 12 Month Filter <a href="#">Spec Sheet (PDF)</a>	
<a href="#">LKAPREZL</a>	Cane Apron for EZ Gray <a href="#">Spec Sheet (PDF)</a>	
<a href="#">SSBFUP</a>	Universal Back Panel Assembly Kit for Single Coolers with Bottle Filler <a href="#">Spec Sheet (PDF)</a>	
<a href="#">MLP100</a>	In-wall Carrier for Single-station On-wall Bottle Fillers Coolers & Fountains <a href="#">Spec Sheet (PDF)</a>	

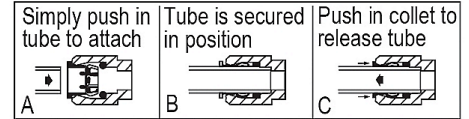
In keeping with our policy of continuing product improvement, Elkay reserves the right to change product specifications without notice. Please visit [elkay.com](http://elkay.com) for the most current version of Elkay product specification sheets. This specification describes an Elkay product with design, quality, and functional benefits to the user. When making a comparison of other producers' offerings, be certain these features are not overlooked.

**IMPORTANT!  
INSTALLER PLEASE NOTE:**

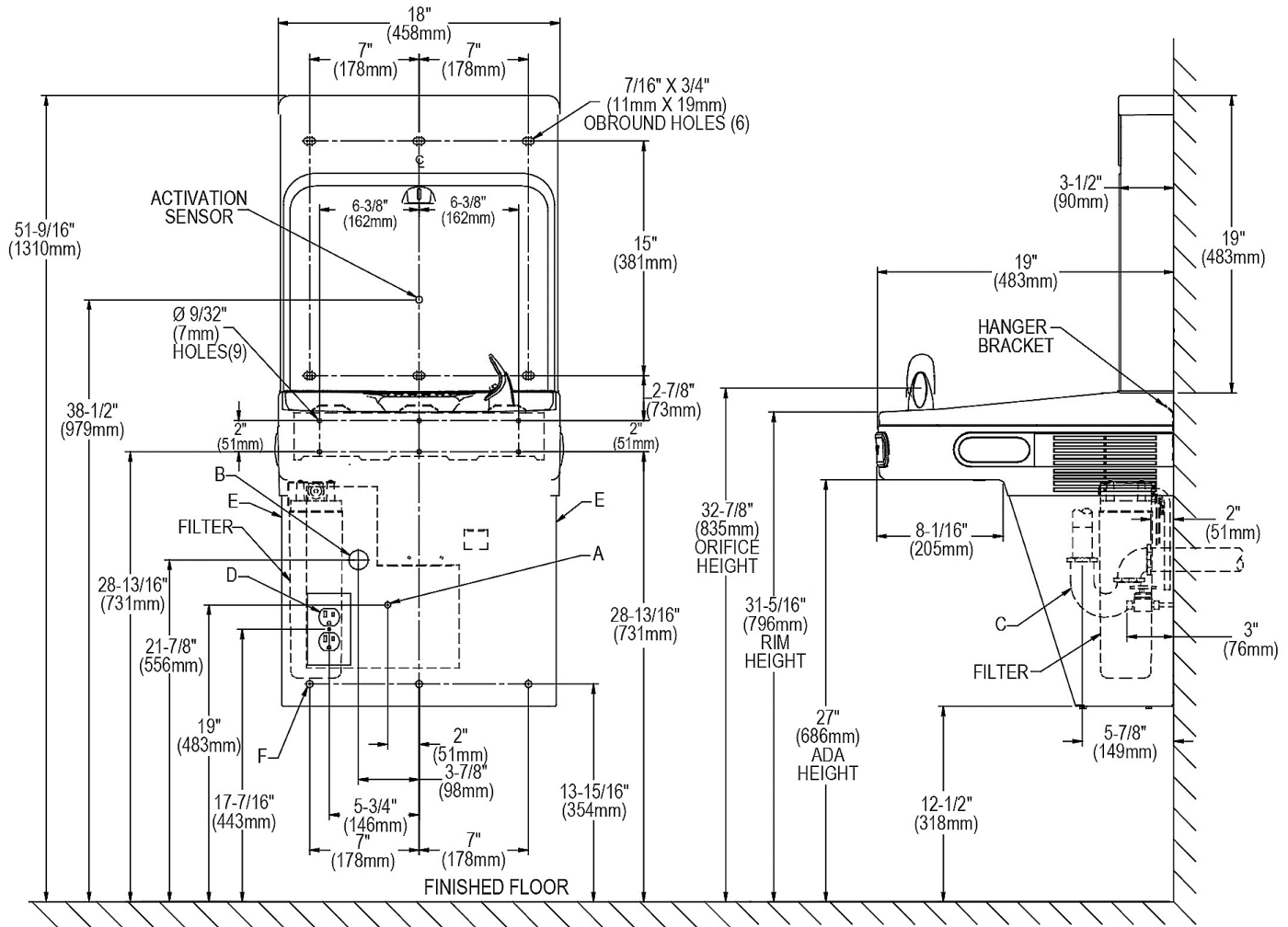
The grounding of electrical equipment such as telephone, computers, etc., to water lines is a common procedure. This grounding may be in the building or may occur away from the building. This grounding can cause electrical feedback into a water cooler, creating an electrolysis which causes a metallic taste or causes an increase in the metal content of the water. This condition is avoidable by using the proper materials as indicated below. The drain fittings which are provided by the installer should also be plastic to electrically isolate the cooler from the building plumbing system.



OPERATION OF QUICK CONNECT FITTINGS



Pushing tube in before pulling it out helps to release tube



REDUCE HEIGHT BY 3 INCHES FOR INSTALLATION OF CHILDRENS ADA COOLER

LEGEND:

- A = Recommended Water Supply location. Shut-off Valve (not furnished) to accept 3/8" O.D. unplated copper tube. Up to 3" (76mm) maximum out from wall.
  - B = Recommended Waste Outlet location. To accommodate 1-1/4" nominal drain. Drain stub 2" (51mm) out from wall.
  - C = 1-1/4" Trap (not furnished).
  - D = Electrical Supply (3) Wire Recessed Box Duplex Outlet.
  - E = Insure proper ventilation by maintaining 6" (152mm) minimum clearance from cabinet louvers to wall.
  - F = 7/16" (11mm) Bolt Holes for fastening to wall.
- Note : New Installations Must Use Ground Fault Circuit Interrupter (GFCI).

In keeping with our policy of continuing product improvement, Elkay reserves the right to change product specifications without notice. Please visit [elkay.com](http://elkay.com) for the most current version of Elkay product specification sheets. This specification describes an Elkay product with design, quality, and functional benefits to the user. When making a comparison of other producers' offerings, be certain these features are not overlooked.