

**ELKAY**<sup>®</sup>

INSTALLATION MANUAL

**ENHANCED SMART CONNECTED-READY RETROFIT KIT**

**THIS ACCESSORY IS AUTHORIZED FOR MODELS LZS8WSLP, LZS8WSSP, LZSTL8WSLP, AND LZSTL8WSSP WITH SERIAL NUMBERS BEGINNING WITH 1905 OR HIGHER.**

**IMPORTANT**

**THIS IS AN INDOOR APPLICATION ONLY. ALL SERVICE TO BE PERFORMED BY AN AUTHORIZED SERVICE PERSON.**

**TOOLS REQUIRED****BUT NOT PROVIDED:**

GLOVES  
SAFETY GLASSES  
5/16 NUT DRIVER (HIGHLY RECOMMENDED)  
FLAT HEAD SCREWDRIVER  
T-10 TORX SCREWDRIVER  
5/32 ALLEN WRENCH  
1/4" NUT DRIVER

**IMPORTANT! INSTALLER PLEASE NOTE.**

**INSTALLER**

To insure you install this Kit easily and correctly, PLEASE READ THESE SIMPLE INSTRUCTIONS BEFORE STARTING THE INSTALLATION. CHECK YOUR INSTALLATION FOR COMPLIANCE WITH PLUMBING, ELECTRICAL, AND OTHER APPLICABLE CODES.

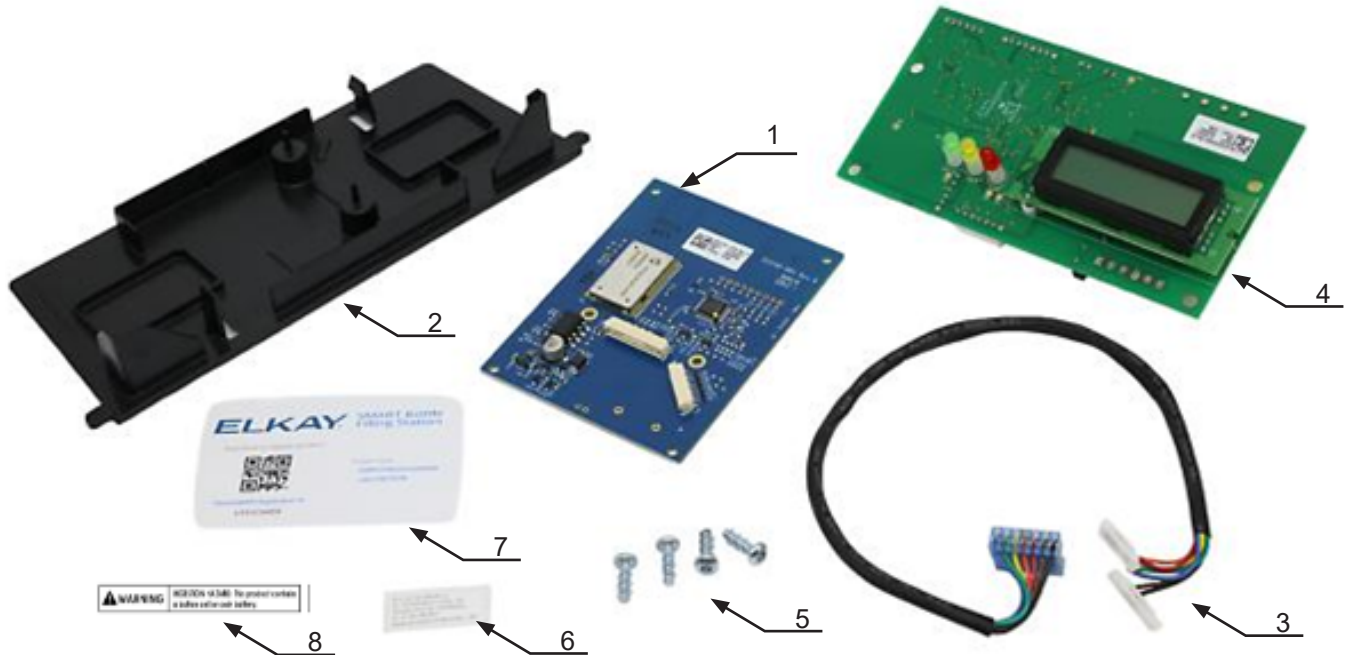
Patent [zurn-elkay.com/patents](http://zurn-elkay.com/patents)

**⚠ WARNING:** Cancer and Reproductive Harm - [www.P65Warnings.ca.gov](http://www.P65Warnings.ca.gov)

**⚠ ADVERTENCIA:** Cáncer y daño reproductivo - [www.P65Warnings.ca.gov](http://www.P65Warnings.ca.gov)

**⚠ AVERTISSEMENT:** Cancer et effets néfastes sur la reproduction - [www.P65Warnings.ca.gov](http://www.P65Warnings.ca.gov)

## Kit Includes



### PARTS LIST

Item No.	Description
1	PCBA, ENDPOINT BOARD (CONNECTED READY)
2	BRACKET, ENDPOINT BOARD MOUNTING
3	ENDPOINT WIRING HARNESS
4	PCBA, MAIN CONTROL BOARD (CONNECTED READY)
5	SCREW-#8 X .50 HI-LOW 6 LOBE PAN HEAD (4 QTY)
6	LABEL, FCCID
7	plumbSMART REGISTRATION ID LABEL
8	LABEL, WARNING INGESTION HAZARD - BATTERY CELL

## Pre-installation steps

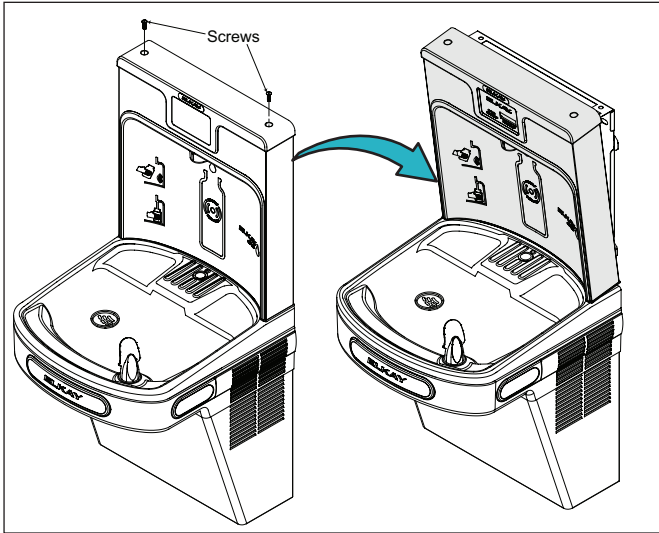
### Install Zurn Gateway and Register Product in plumbSMART

1. Install Zurn Gateway (required and sold separately) per the gateway instructions manual, if an existing gateway is not within communication range.
2. Be sure the gateway is powered on and connected (per gateway installation instructions) prior to installing your bottle filler. Serial number located on back of the Gateway, is required to register the gateway to your tenant.
3. If you have not already set up a tenant account and your administrator access, request at 844-987-6737 or [zurnconnectedproducts@zurn.com](mailto:zurnconnectedproducts@zurn.com)
4. Log into [plumbsmart.zurn.com](http://plumbsmart.zurn.com)
5. Register Connected product in plumbSMART using PlumbSMART Registration ID located on PlumbSMART ID Registration Label, provided with Retrofit Kit Product (Watch How-To videos to get started. Located in the support section inside the portal.)

## Installation Procedure - Connected-ready

1. Disconnect electrical power to the unit.
2. Turn off water supply.
3. Remove two (2) mounting screws with 5/32" Allen wrench and pull bottle filler off the wall mounting plate.

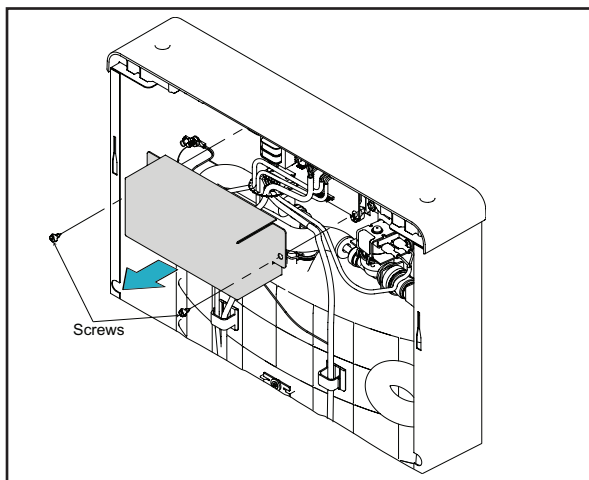
Note: Do not discard mounting screws, they will be needed to reinstall.



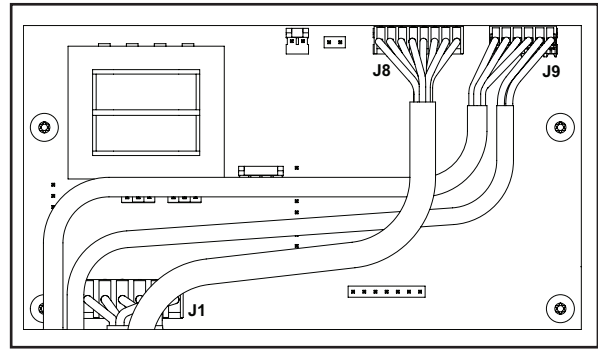
**CAUTION** Make sure power is disconnected prior to retrofitting.

4. Remove (2) screws to remove Main control board cover using 1/4" nut driver.

Note: Do not discard mounting screws, they will be needed to reinstall.

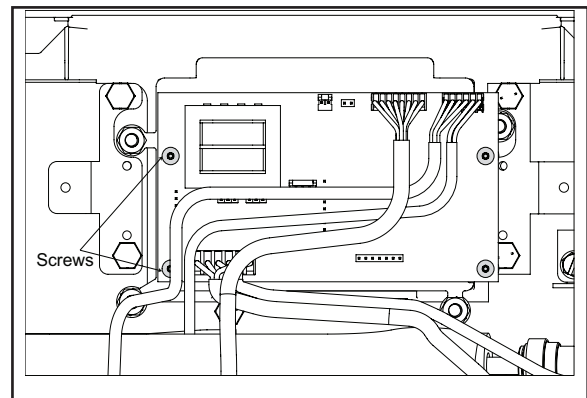


5. Disconnect connection J1, J8 & J9 shown below.

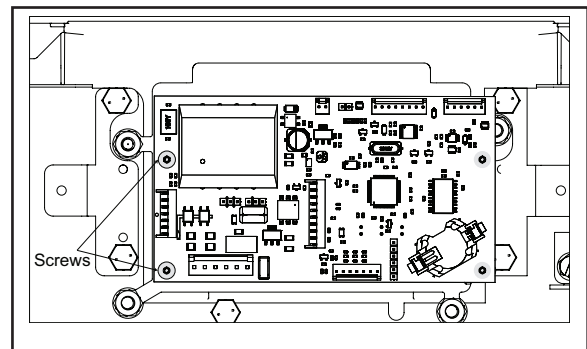


6. Remove (4) T-10 Torx screws to remove control board.

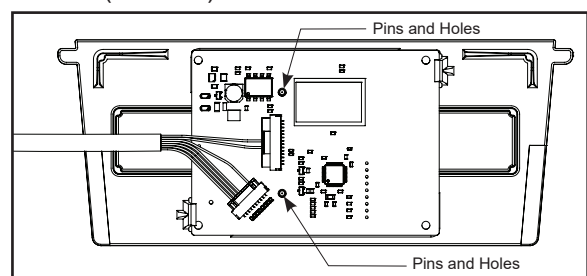
Note: Do not discard mounting screws, they will be needed to reinstall.



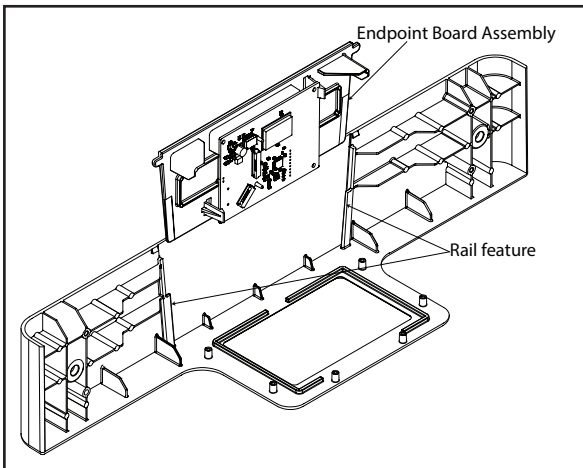
7. Replace new connected-ready control board and refasten using (4) T-10 Torx screws.



8. Reconnect cable connections J1, J8 and J9.
9. Assemble Endpoint board on bracket: Align pins on bracket and holes on Endpoint board to locate and Snap on Endpoint board to plastic bracket. Attach harness (item # 3) as shown below.

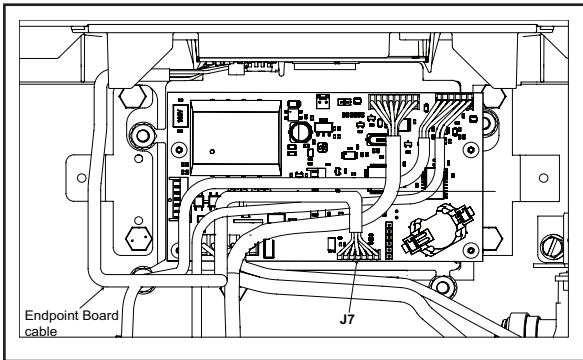


10. If top cap stiffener piece is installed, remove by simply pulling out. Install endpoint board assembly by sliding inside using rail feature shown below. Ensure it is secured properly.

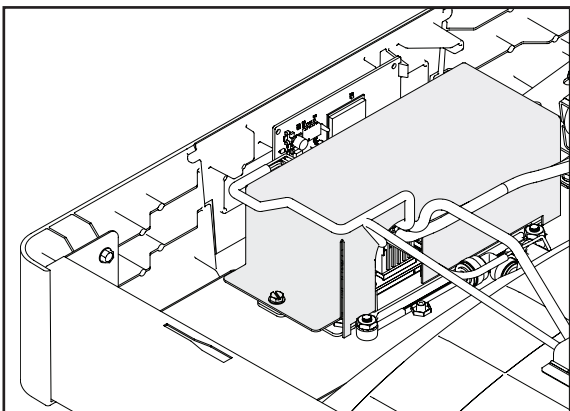


11. Connect endpoint board cable to J7 connector on the main board, as shown below.

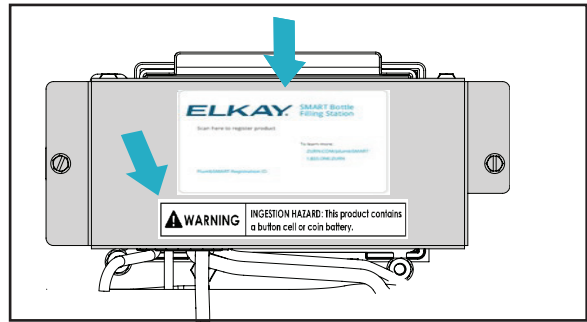
**CAUTION** Align and gently press the connectors together until they are fully mated. Do not install and force the connectors together the wrong way, as this could lead to damage or loss of connected functionality.



12. Replace the main control board cover. Ensure all the cable are organized to exit from the cable opening as shown and refasten the cover using (2) screws.

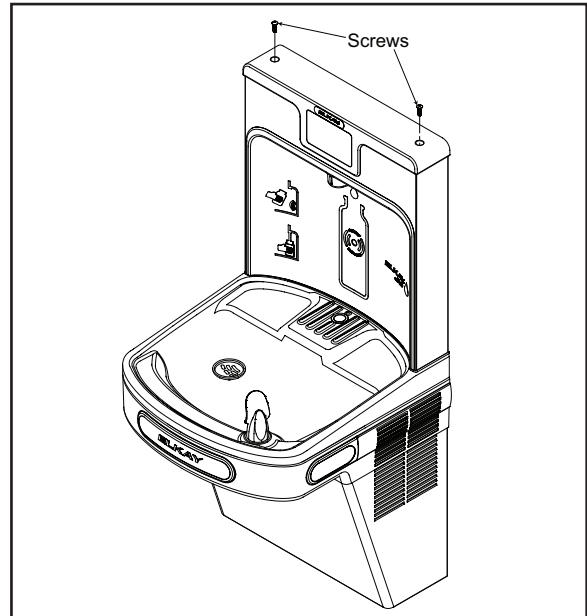


13. Apply warning Label and plumbSMART registration ID label on control board cover at desired location.

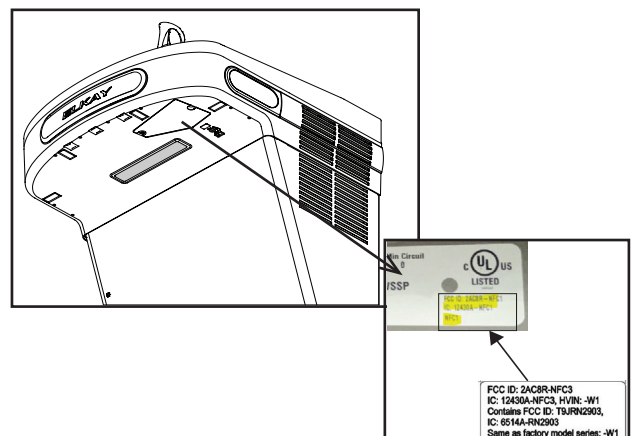


14. Ensure Product is registered using PlumbSMART ID from the PlumbSMART Registration ID Label, into PlumbSMART portal -- [plumbsmart.zurn.com](http://plumbsmart.zurn.com)

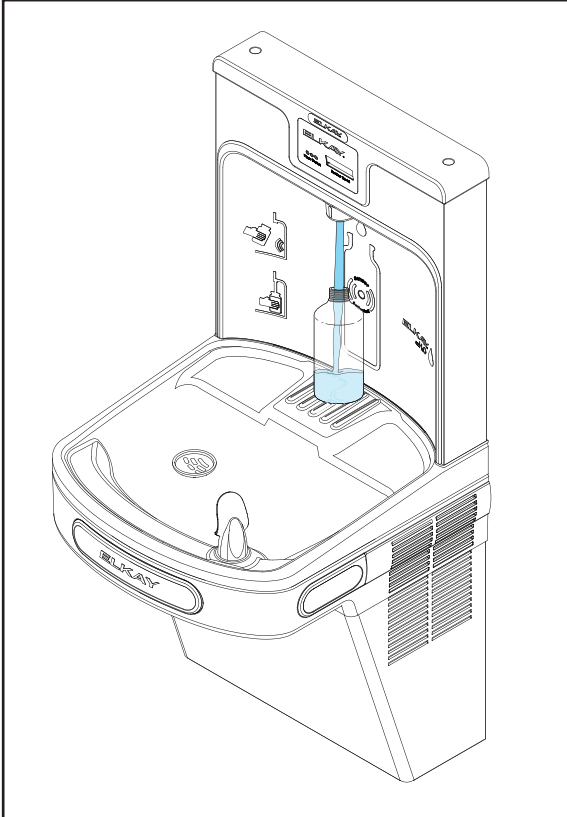
15. Install back bottle filler to the wall mounting plate and refasten using (2) screws making sure gasket is properly placed beneath the bottle filler.



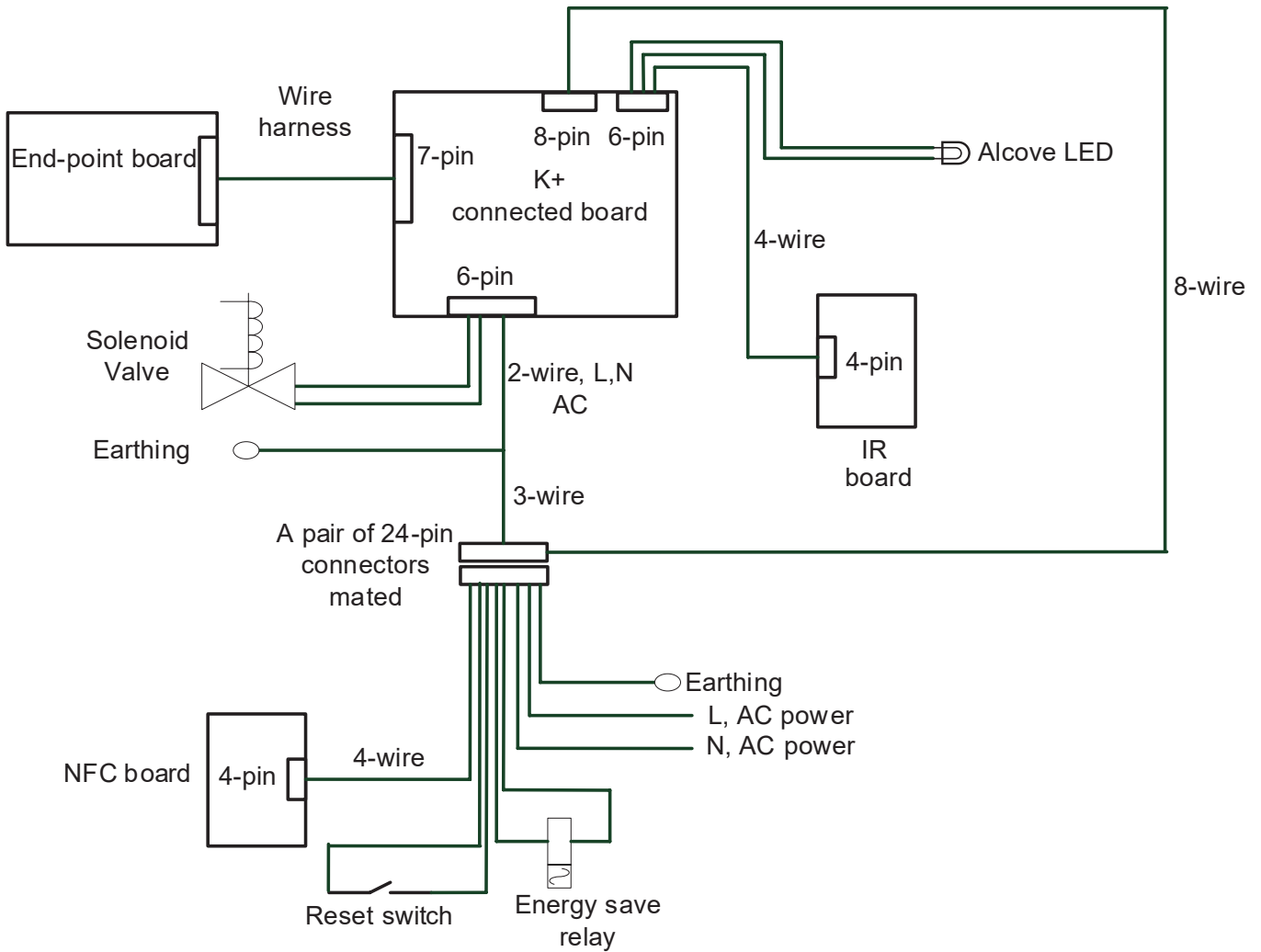
16. Apply FCC ID lable received in the kit and paste it on the product data label to overwrite existing FCC information, as shown below.




17. Turn ON water supply and electrical power to the unit. Visually check for any leaks. Once power is applied to the bottle filler, the GREEN LED light should illuminate showing good filter status (if equipped with filter) along with the LCD Bottle Counter.
18. Verify proper dispensing by placing cup or any opaque object in front of sensor area and verify water dispenses and bottle count advances. If air in system causes the stream to be opaque, run until stream is clear.



# Wiring Diagram



<b>⚠ WARNING</b>	
<ul style="list-style-type: none"> <li>• <b>INGESTION HAZARD:</b> This product contains a button cell or coin battery.</li> <li>• <b>DEATH</b> or serious injury can occur if ingested.</li> <li>• A swallowed button cell or coin battery can cause <b>Internal Chemical Burns</b> in as little as <b>2 hours</b>.</li> <li>• <b>KEEP</b> new and used batteries <b>OUT OF REACH of CHILDREN</b></li> <li>• <b>Seek immediate medical attention</b> if a battery is suspected to be swallowed or inserted inside any part of the body.</li> </ul>	

## FCC COMPLIANCE STATEMENT

**CAUTION:** Changes or modifications not expressly approved could void your authority to use this equipment. This device complies with Part 15 of the FCC Rules. Operation is subject to the following two conditions: (1) This device may not cause harmful interference, and (2) this device must accept any interference received, including interference that may cause undesired operation.

**Note:** This equipment has been tested and found to comply with the limits for a Class B digital device, pursuant to part 15 of the FCC Rules. These limits are designed to provide reasonable protection against harmful interference in a residential installation. This equipment generates, uses and can radiate radio frequency energy and, if not installed and used in accordance with the instructions, may cause harmful interference to radio communications. However, there is no guarantee that interference will not occur in a particular installation. If this equipment does cause harmful interference to radio or television reception, which can be determined by turning the equipment off and on, the user is encouraged to try to correct the interference by one or more of the following measures:

- Reorient or relocate the receiving antenna.
- Increase the separation between the equipment and receiver.
- Connect the equipment into an outlet on a circuit different from that to which the receiver is connected.
- Consult the dealer or an experienced radio/TV technician for help.

The device shall be used in such a manner that the potential for human contact normal operation is minimized. This equipment complies with FCC radiation exposure limits set forth for an uncontrolled environment. This equipment should be installed and operated with a minimum distance of 20cm between the radiator and your body. This device and its antenna(s) must not be co-located or operating in conjunction with any other antenna or transmitter.

## INDUSTRY CANADA STATEMENT

This device complies with Industry Canada license-exempt RSS standard(s). Operation is subject to the following two conditions: (1) this device may not cause interference, and (2) this device must accept any interference, including interference that may cause undesired operation of the device.

Le présent appareil est conforme aux CNR d'Industrie Canada applicables aux appareils radio exempts de licence. L'exploitation est autorisée aux deux conditions suivantes : (1) l'appareil ne doit pas produire de brouillage, et (2) l'utilisateur de l'appareil doit accepter tout brouillage radioélectrique subi, même si le brouillage est susceptible d'en compromettre le fonctionnement.

The device shall be used in such a manner that the potential for human contact normal operation is minimized. This equipment complies with RSS-102 radiation exposure limits. This equipment should be installed and operated with a minimum distance of 20 cm between the radiator and your body. This device and its antenna(s) must not be co-located or operating in conjunction with any other antenna or transmitter.

Le dispositif doit être utilisé de manière à minimiser le potentiel de fonctionnement normal par contact humain. Cet équipement est conforme aux limites d'exposition au rayonnement RSS-102. Cet équipement doit être installé et utilisé avec une distance minimale de 20 cm entre le radiateur et votre corps. Cet appareil et son (ses) antenne (s) ne doivent pas être co-localisés ou utilisés conjointement avec une autre antenne ou un autre émetteur.

FOR PARTS, CONTACT YOUR LOCAL DISTRIBUTOR OR CALL 1.800.834.4816  
 PARA PIEZAS, CONTACTE A SU DISTRIBUIDOR LOCAL O LLAME AL 1.800.834.4816  
 POUR OBTENIR DES PIÈCES, CONTACTEZ VOTRE DISTRIBUTEUR LOCAL OU COMPOSEZ LE 1.800.834.4816

REPAIR SERVICE INFORMATION TOLL FREE NUMBER 1.800.260.6640  
 NÚMERO GRATIS DE SERVICIO 1.800.260.6640  
 INFORMATIONS POUR LE SERVICE PAR NUMERO SANS FRAIS 1.800.260.6640

ELKAY MANUFACTURING COMPANY • 1333 BUTTERFIELD ROAD SUITE 200 DOWNERS GROVE, IL 60515 USA • 630.574.8484 • [www.elkay.com](http://www.elkay.com)