

# ELKAY<sup>®</sup>

## SPECIFICATIONS

### Avado<sup>™</sup>

## Undermount Double Bowl Sink

### Model EFU352010L

#### GENERAL

Highest quality sink fabricated of #16 (1.6mm) gauge, type 304 (19-8) nickel bearing stainless steel. Undermount.

#### DESIGN FEATURES

Bowl Depth: 10" (254mm).

Coved Corners: Zero radius.

Finish: Exposed surfaces have a Polished Satin finish.

Underside: Fully protected by heavy duty Sound Guard<sup>®</sup> undercoating to dampen sound and reduce condensation.

#### OTHER

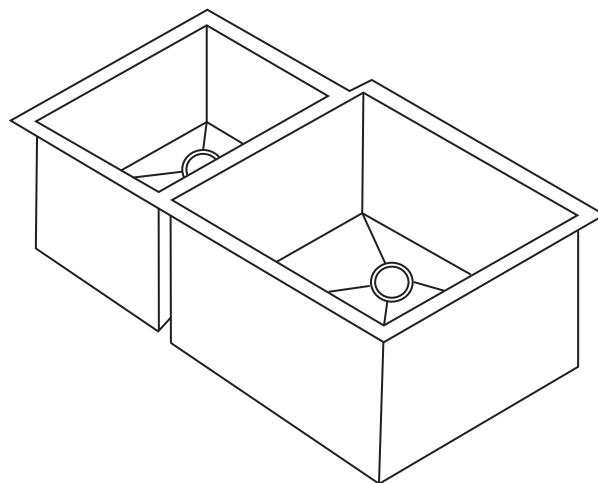
Drain Opening: 3-1/2" (89mm).

NOTE: All Elkay undermount sinks are designed to attach to the underside of any solid surface countertop.

Sink complies with ASME A112.19.3/ CSA B45.4



Sinks are listed by IAPMO<sup>®</sup> as meeting the applicable requirements of the Uniform Plumbing Code<sup>®</sup>, International Plumbing Code<sup>®</sup>, and National Plumbing Code of Canada.



Model EFU352010L

#### SINK PACKAGE(S)

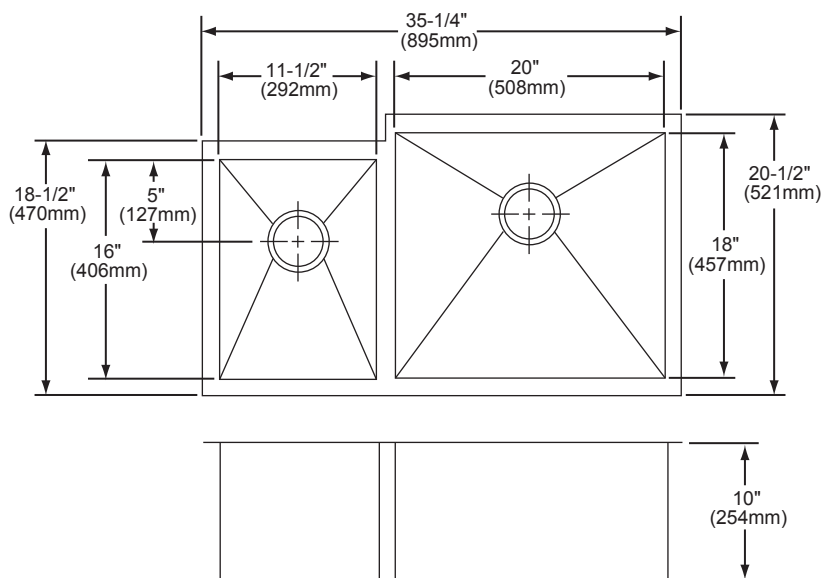
MODEL	SINK	BOTTOM GRID	QTY	DRAIN	QTY
EFU352010LDBG	EFU352010L	LKFOBG2018SS	1	LK99	1

#### SINK DIMENSIONS (INCHES)\*

Model Number	Overall		Inside Left Bowl			Inside Right Bowl			Cutout in Countertop	Minimum Cabinet Size
	L	W	L	W	D	L	W	D		
EFU352010L	35 1/4 (895mm)	20 1/2 (521mm)	11 1/2 (292mm)	16 (406mm)	10 (254mm)	20 (508mm)	18 (457mm)	10 (254mm)	See Template**	39 (991mm)

\* Length is left to right. Width is front to back.

\*\* Template is packed with every sink.



In keeping with our policy of continuing product improvement, Elkay reserves the right to change product specifications without notice. Please visit [elkay.com](http://elkay.com) for the most current version of Elkay product specification sheets.

This specification describes an Elkay product with design, quality, and functional benefits to the user. When making a comparison of others producers' offerings, be certain these features are not overlooked.

**Avado™**  
**Undermount Double Bowl Sink**  
**Model EFU352010L**

**ELKAY®**  
**SPECIFICATIONS**

**OPTIONAL ACCESSORIES**

Mounting Clips: LKUCLIP8 (2 packages required)

Utensil Caddy for Rinsing Basket: LKWUCSS

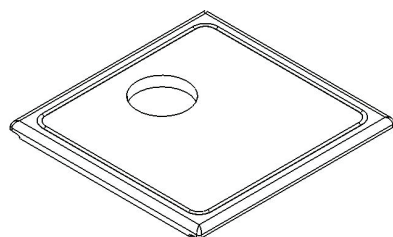
Drain: LK99

For Additional accessories see table below.

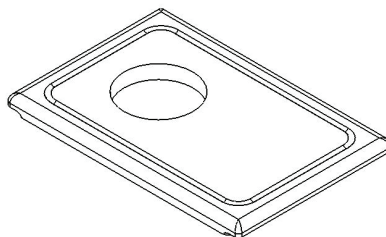
Model Number	Bowl	Bowl	Overall			Material/Finish
			L	W	D	
LKCBF1116HW	Cutting Board	Left	11¼ (286mm)	16⅞ (429mm)	1 (25mm)	Hardwood
LKCBF2018HW	Cutting Board	Right	19½ (495mm)	18⅞ (479mm)	1 (25mm)	Hardwood
LKFOBG1116SS	Bottom Grid	Left	10½ (267mm)	15 (381mm)	1⅞ (29mm)	Polished stainless steel
LKFOBG2018SS	Bottom Grid	Right	19 (483mm)	17 (432mm)	1⅞ (29mm)	Polished stainless steel
LKFRB1116SS	Rinsing Basket	Left	10½ (267mm)	15 (381mm)	5⅝ (135mm)	Polished stainless steel

\*Length is left to right. Width is front to back.

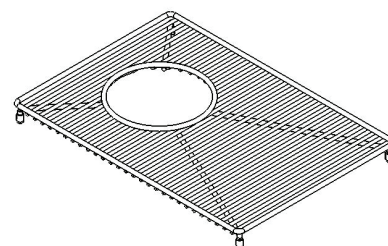
\*\*Fits countertop opening



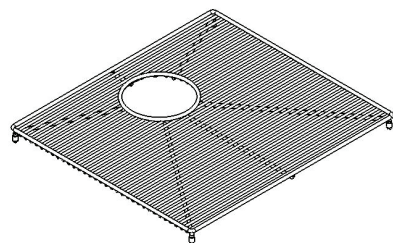
LKCBF2018HW



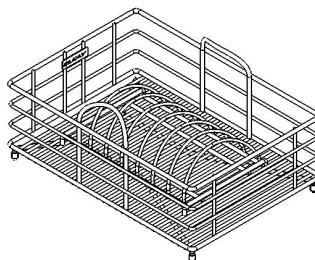
LKCBF1116HW



LKFOBG1116SS



LKFOBG2018SS



LKFRB1116SS

In keeping with our policy of continuing product improvement, Elkay reserves the right to change product specifications without notice. Please visit [elkay.com](http://elkay.com) for the most current version of Elkay product specification sheets.

This specification describes an Elkay product with design, quality, and functional benefits to the user. When making a comparison of others producers' offerings, be certain these features are not overlooked.