

# ELKAY®

## SPECIFICATIONS

### Asana® Undermount Single Bowl Lavatory Sink Model ELUH1511

#### IMPORTANT! ELU / ELUH Update

ELUH models have been redesigned to accommodate 1/2" reveal and no reveal installation options. ELU models should be ordered as ELUH.

#### GENERAL

Highest quality sink formed of #18 (1.2mm) gauge, type 304 (18-8) nickel bearing stainless steel. Undermount.

#### DESIGN FEATURES

Bowl Depth: 6" (152mm)

Coved Corners: 1-3/4" (44mm) vertical and horizontal radius.

Finish: Exposed surfaces are hand blended to a Lustrous Highlighted Satin finish.

Underside: Fully undercoated to reduce condensation and dampen sound.

#### OTHER

Drain Opening: 1-5/8" (41mm)

Note: All Elkay undermount sinks are designed to affix to the underside of any solid surface countertop.

Sink complies with ASME A112.19.3/ CSA B45.4



Sinks are listed by IAPMO® as meeting the applicable requirements of the Uniform Plumbing Code®, International Plumbing Code®, and National Plumbing Code of Canada.



These sinks are compliant to ADA and ANSI/ICC A117.1 accessibility requirements when installed according to the requirements outlined in these standards.

#### OPTIONAL ACCESSORIES

Drain: LK174, LKAD174, LK175

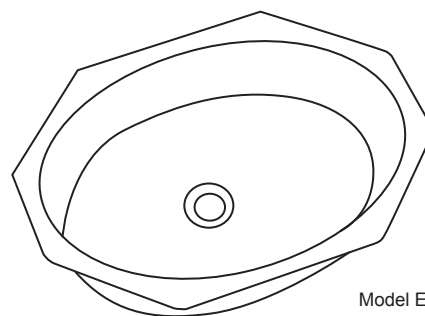
Mounting Clip: LKUCLIP8

#### SINK DIMENSIONS\*

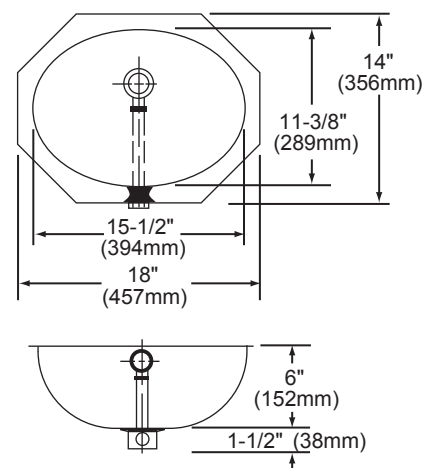
Model Number	Overall		Inside Bowl			Cutout in Countertop	Minimum Cabinet Size
	L	W	L	W	D		
ELUH1511	18 (457mm)	14 (356mm)	15 1/2 (394mm)	11 3/8 (289mm)	6 (152mm)	See Template**	21 (533mm)

\*Length is left to right. Width is front to back.

\*\*Template #1000001508 is packed with every sink.

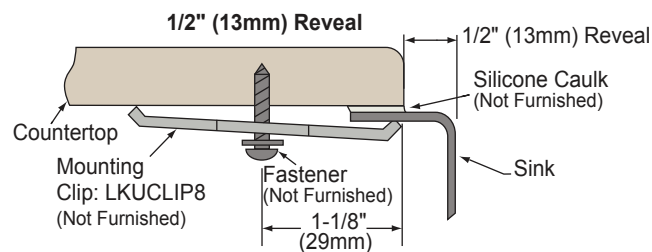
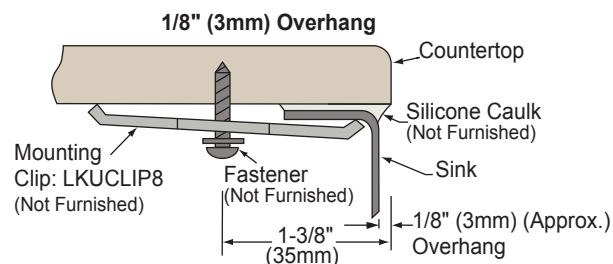


Model ELUH1511



ELUH1511 Illustrated

#### Installation Profile



In keeping with our policy of continuing product improvement, Elkay reserves the right to change product specifications without notice. Please visit [elkay.com](http://elkay.com) for the most current version of Elkay product specification sheets.

This specification describes an Elkay product with design, quality, and functional benefits to the user. When making a comparison of other producers' offerings, be certain these features are not overlooked.