

# ELKAY® SPECIFICATIONS

## Gourmet Undermount Single Bowl Sink Model ELUH1616

### IMPORTANT! ELU / ELUH Update

ELUH models have been redesigned to accommodate 1/2" reveal and no reveal installation options. ELU models should be ordered as ELUH.

### GENERAL

Highest quality sink formed of #18 (1.2mm) gauge, type 304 (18-8) nickel bearing stainless steel. Undermount.

### DESIGN FEATURES

Bowl Depth: 7-7/8" (200mm).

Finish: Exposed surfaces are hand blended to a Lustrous Highlighted Satin finish.

Underside: Underside of sink is fully protected by heavy duty Sound Guard® undercoating to reduce condensation and dampen sound.

Sink complies with ASME A112.19.3/ CSA B45.4



Sinks are listed by IAPMO® as meeting the applicable requirements of the Uniform Plumbing Code®, International Plumbing Code®, and National Plumbing Code of Canada.

### OTHER

Drain Opening: 3-1/2" (89mm).

NOTE: All Elkay undermount sinks are designed to affix to the underside of any solid surface countertop.

Installation: See illustrated profile below.

### OPTIONAL ACCESSORIES

Bottom Grid: LKWOBG1616SS.

Cutting Board: (Reveal mount only) CBS1316, CB1713

Drain: LK99.

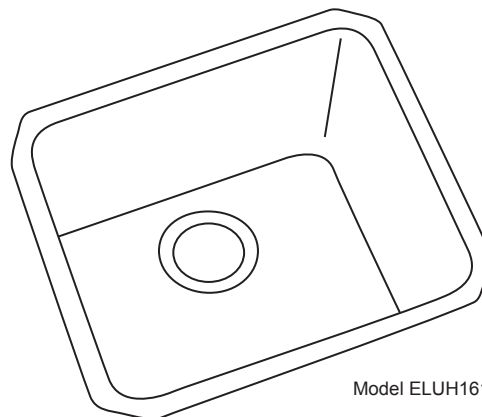
Mounting Clip: LKUCLIP8

Rinsing Basket: LKWRB1316SS, LKWERBSS

Utensil Caddy for Rinsing Basket: LKWUCSS

### SINK PACKAGE(S)

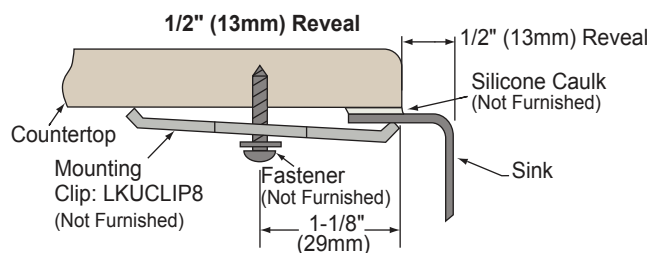
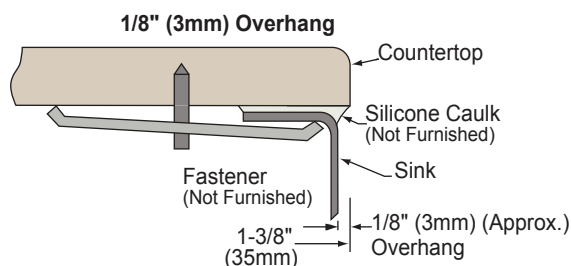
MODEL	SINK	BOTTOM GRID	QTY	DRAIN	QTY
ELUH1616DBG	ELUH1616	LKWOBG1616SS	1	LK99	1



Model ELUH1616



### Installation Profile



In keeping with our policy of continuing product improvement, Elkay reserves the right to change product specifications without notice. Please visit [elkay.com](http://elkay.com) for the most current version of Elkay product specification sheets.

This specification describes an Elkay product with design, quality, and functional benefits to the user. When making a comparison of other producers' offerings, be certain these features are not overlooked.

# Gourmet Undermount Single Bowl Sink

## Model ELUH1616

# ELKAY<sup>®</sup>

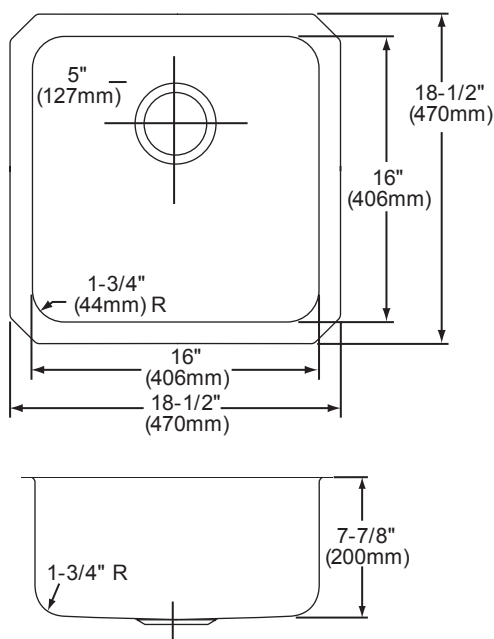
## SPECIFICATIONS

### SINK DIMENSIONS\*

Model Number	Overall		Inside Bowl			Cutout in Countertop	Minimum Cabinet Size
	L	W	L	W	D		
ELUH1616	18 <sup>1</sup> / <sub>2</sub> (470mm)	18 <sup>1</sup> / <sub>2</sub> (470mm)	16 (406mm)	16 (406mm)	7 <sup>7</sup> / <sub>8</sub> (200mm)	See Template**	21 (533mm)

\*Length is left to right. Width is front to back.

\*\*Template #1000001420 is packed with every sink.



Model ELUH1616 Illustrated

In keeping with our policy of continuing product improvement, Elkay reserves the right to change product specifications without notice. Please visit [elkay.com](http://elkay.com) for the most current version of Elkay product specification sheets.

This specification describes an Elkay product with design, quality, and functional benefits to the user. When making a comparison of other producers' offerings, be certain these features are not overlooked.