

ELKAY[®]

SPECIFICATIONS

Gourmet Undermount Sink With Work Shelf and Perfect Drain™ Models ELUHWS1418PD and ELUHWS141810PD

NEW ELUH Installation Options

ELUH models have been redesigned to accommodate 1/2" reveal and no reveal installation options.

GENERAL

Highest quality sink formed of #18 (1.2mm) gauge, type 304 (18-8) nickel bearing stainless steel with **Perfect Drain**.
LKWS1418SS Work Shelf included. Undermount.

DESIGN FEATURES

Bowl Depth: 7-7/8" (200mm), Overall depth: 9-3/8" (238mm) (ELUHWS1418PD)
10" (254mm), Overall depth: 11-3/4" (298mm) (ELUHWS141810PD).

Coved Corners: 1-3/4" (44mm) vertical and horizontal radius.

Finish: Exposed surfaces are hand blended to a Lustrous Highlighted Satin finish.

Underside: Underside of sink is fully protected by heavy duty Sound Guard[®] undercoating to reduce condensation and dampen sound.

Smart Support System: Located 4-1/2" (114mm) from the top of the sink in the large bowl to allow use of the **LKWS1418SS** Work Shelf.

Perfect Drain: Seamlessly welded stainless steel collar eliminates the gap between a traditional drain and the sink for a sanitary and gap free installation. Each sink shipped with one LKPD1 drain kit, or a garbage disposer can be installed on sink bowl for user convenience.

Patent Pending

OTHER

Drain opening: 3-3/8" (86mm)

NOTE: All Elkay undermount sinks are designed to affix to the underside of any solid surface countertop.

Waste Fitting complies with ASME A112.18.2/CAN/CSA-B125.2

Sink complies with ASME A112.19.3/ CSA B45.4



Sinks are listed by IAPMO[®] as meeting the applicable requirements of the Uniform Plumbing Code[®], International Plumbing Code[®], and National Plumbing Code of Canada.

ACCESSORIES*

Model Number	Description	Overall			Material/Finish
		L	W	Depth/Thickness	
LKWS1418SS	Work Shelf	13-13/16" (351mm)	17-3/4" (451mm)	1/4" (6mm)	Polished Stainless Steel

*Length is left to right. Width is front to back.

OPTIONAL ACCESSORIES

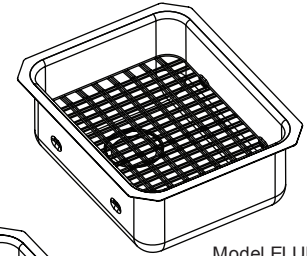
Bottom Grid: LKWOBG1418SS

Cutting Boards: (Reveal mount only) CBR1418, CBS1418

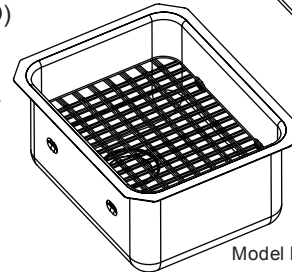
Mounting Clip: LKUCLIP8

Rinsing Baskets: LKWRB1418SS, LKWERBSS

Utensil Caddy for Rinsing Basket: LKWUCSS



Model ELUHWS1418PD

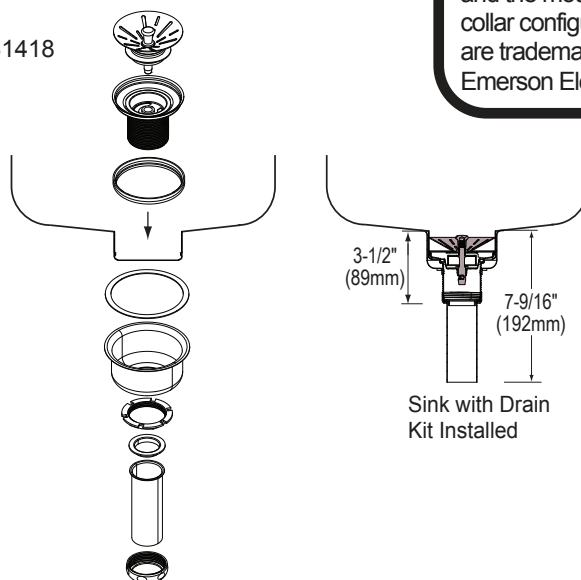


Model ELUHWS141810PD

in sink erator[®]

Elkay[®] Perfect Drain™ sinks are designed and approved for compatible disposers manufactured by InSinkErator[®] utilizing the Quick Lock[®] mounting configuration. Use of non-approved disposers may void Elkay warranty.

InSinkErator, Quick Lock and the mounting collar configuration are trademarks of Emerson Electric Co.



Sink with Drain Kit Installed

In keeping with our policy of continuing product improvement, Elkay reserves the right to change product specifications without notice. Please visit elkay.com for the most current version of Elkay product specification sheets.

This specification describes an Elkay product with design, quality, and functional benefits to the user. When making a comparison of other producers' offerings, be certain these features are not overlooked.

ELKAY[®]

SPECIFICATIONS

Gourmet Undermount Sink With Work Shelf and Perfect Drain™

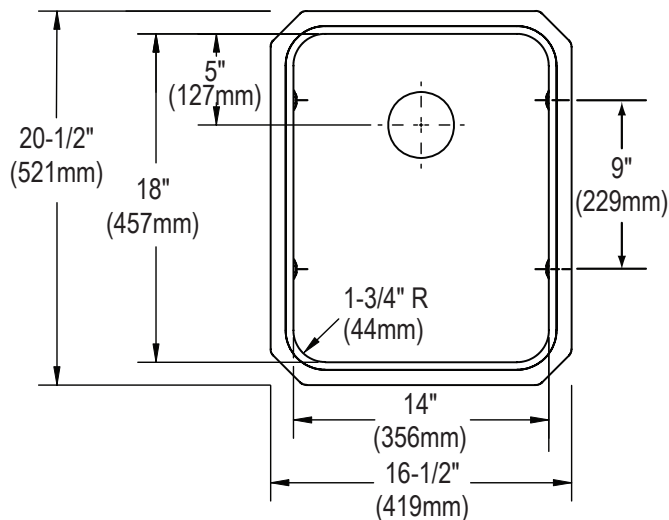
Models ELUHWS1418PD and ELUHWS141810PD

SINK DIMENSIONS*

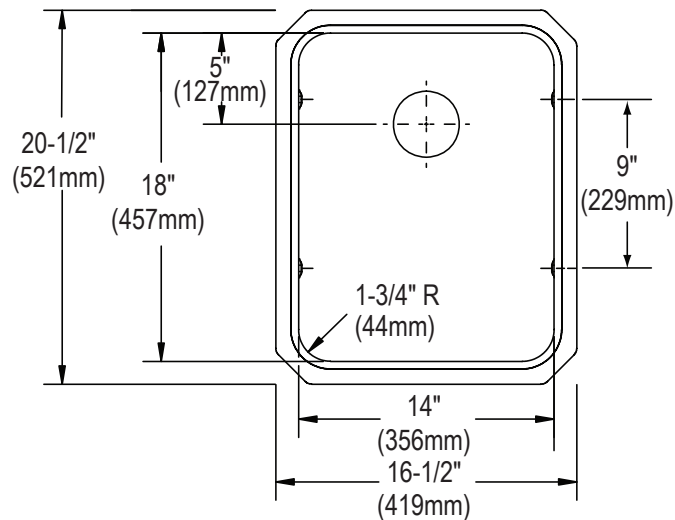
Model Number	Overall			Inside Bowl			Cutout in Countertop	Minimum Cabinet Size
	L	W	D	L	W	D		
ELUHWS1418PD	16-1/2 (419mm)	20-1/2 (521mm)	9-3/8 (238mm)	14 (356mm)	18 (457mm)	7-7/8 (200mm)	See Template**	21 (533mm)
ELUHWS141810PD	16-1/2 (419mm)	20-1/2 (521mm)	11-1/2 (292mm)	14 (356mm)	18 (457mm)	10 (254mm)		21 (533mm)

*Length is left to right. Width is front to back.

**Template #1000001307 is packed with every sink.

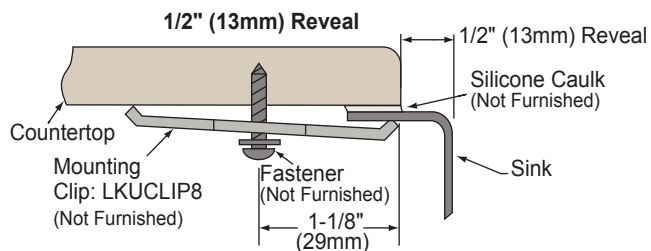
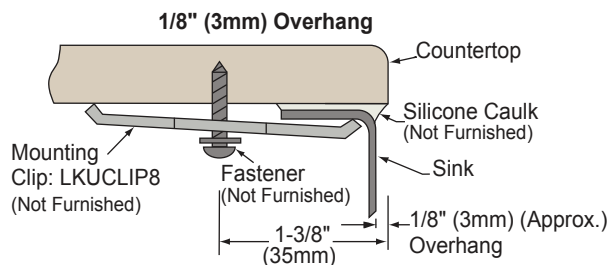


Model ELUHWS1418PD Illustrated



Model ELUHWS141810PD Illustrated

Installation Profile



In keeping with our policy of continuing product improvement, Elkay reserves the right to change product specifications without notice. Please visit elkay.com for the most current version of Elkay product specification sheets.

This specification describes an Elkay product with design, quality, and functional benefits to the user. When making a comparison of other producers' offerings, be certain these features are not overlooked.