

ELKAY®

SPECIFICATIONS

Gourmet Undermount Double Bowl Sink with Aqua Divide Model EAQDUH3421

GENERAL

High quality sink formed of 18 gauge, type 304 (18-8) nickel bearing stainless steel. Undermount.

DESIGN FEATURES

Bowl Depths: 8-3/4" (222mm)

Aqua Divide Height: 4" (102mm).

Coved Corners: 4-7/16" (113mm) vertical and 2" (51mm) horizontal radius.

Finish: Exposed surfaces are polished to a bright highlighted satin finish.

Underside: Underside of sink is fully protected by heavy duty Sound Guard undercoating to reduce condensation and dampen sound.

Reversible design: sink can be rotated so that the large bowl can be on the left or right.

OTHER

Drain Opening: 3-1/2" (89mm).

Note: All Elkay Undermount sinks are designed to affix to the underside of any solid surface countertop.

Sink complies with ASME A112.19.3/ CSA B45.4

 Sinks are listed by IAPMO® as meeting the applicable requirements of the Uniform Plumbing Code®, International Plumbing Code®, and National Plumbing Code of Canada.

OPTIONAL ACCESSORIES

Bottom Grid: LKWBG1719SS (Large Bowl); LKWBG1419SS (Small Bowl)

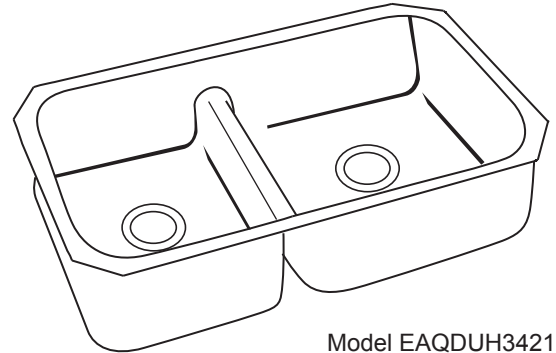
Cutting Board: LKCB2918HW (Sink must be installed with a 1/2" reveal for cutting board to fit properly.)

Drain: LK99

Mounting Clips: LKUCIP8 (2 packages recommended)

Rinsing Basket: LKWRB1414SS, LKWERBSS

Utensil Caddy for Rinsing Basket: LKWUCSS



Model EAQDUH3421



OPTIONAL ACCESSORIES

Bottom Grid: LKWBG1719SS (Large Bowl); LKWBG1419SS (Small Bowl)

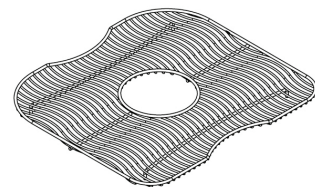
Cutting Board: LKCB2918HW (Sink must be installed with a 1/2" reveal for cutting board to fit properly.)

Drain: LK99

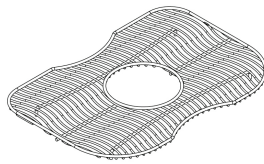
Mounting Clips: LKUCIP8 (2 packages recommended)

Rinsing Basket: LKWRB1414SS, LKWERBSS

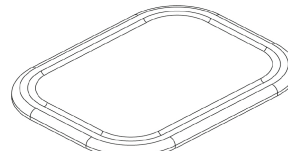
Utensil Caddy for Rinsing Basket: LKWUCSS



LKWBG1719SS



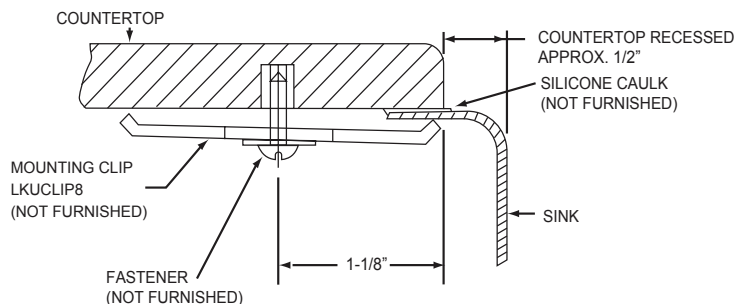
LKWBG1419SS



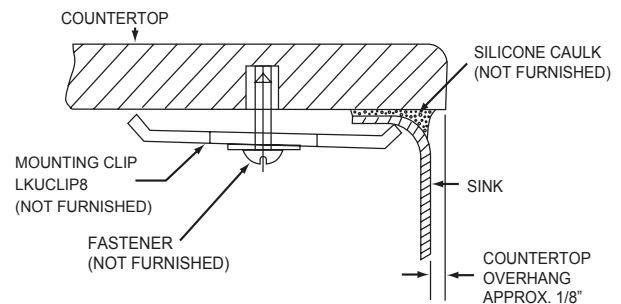
LKCB2918HW



DUAL TEMPLATE MOUNTING OPTIONS



1/2" SINK RIM REVEAL



1/8" COUNTERTOP OVERHANG

In keeping with our policy of continuing product improvement, Elkay reserves the right to change product specifications without notice. Please visit elkay.com for the most current version of Elkay product specification sheets.

This specification describes an Elkay product with design, quality, and functional benefits to the user. When making a comparison of others producers offerings, be certain these features are not overlooked.

ELKAY®

SPECIFICATIONS

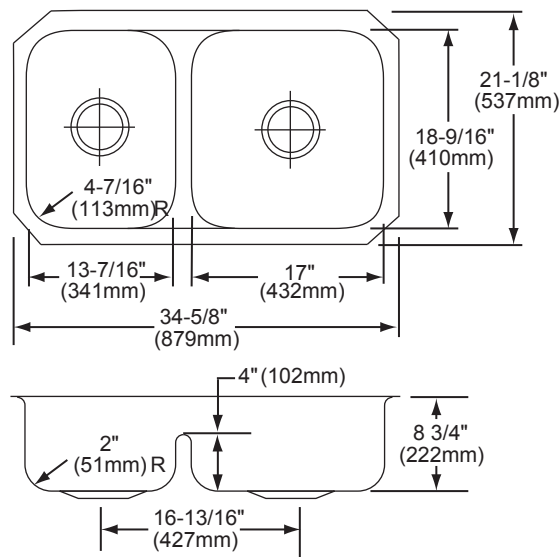
Gourmet Undermount Double Bowl Sink with Aqua Divide Model EAQDUH3421

Sink Dimension*

Model Number	Overall		Inside Small Bowl			Inside Large Bowl			Cutout in Countertop	Minimum Cabinet Size
	L	W	L	W	D	L	W	D		
EAQDUH3421	34 5/8" (879 mm)	21 1/8" (537 mm)	13 7/16" (341 mm)	18 9/16" (471 mm)	8 3/4" (222 mm)	17" (432mm)	18 9/16" (471 mm)	8 3/4" (222 mm)	See Template**	Custom

* - Length is left to right. Width is front to back.

** - Dual mount template 1000001516 is packed with sink.



Model EAQDUH3421 Illustrated

In keeping with our policy of continuing product improvement, Elkay reserves the right to change product specifications without notice. Please visit elkay.com for the most current version of Elkay product specification sheets.

This specification describes an Elkay product with design, quality, and functional benefits to the user. When making a comparison of others producers offerings, be certain these features are not overlooked.