

Installation / Care / Use Manual

Original Instructions

Model: VRCTL8S2JOC



Description

Combination Refrigerated Drinking Fountain (Cooler) delivers chilled, clean potable drinking water. Two Level Water Cooler houses the refrigeration and delivers a steady stream of water for direct drinking with push button activated water supply.

Ratings

- Electrical: 230Vac, 50Hz, (See Nameplate for Amperage), 1 phase.
- Ambient Air Temperature: 50-100.4 °F (10-38 °C).
- Water Pressure: 20-100 psig (0.14-0.69 MPa).
- Maximum Water Temperature: 90 °F (32 °C).
- Refrigerant: HFC-R134a
- Ingress Protection: IP21
- For Indoor Commercial Use only.
- Water Inlet: 3/8" O.D. unplated copper tube.
- Waste Water Outlet: 1-1/2" (38.1mm) O.D. tube

Definitions

DANGER – Indicates death or serious injury will result if proper precautions are not taken.

WARNING – Indicates death, serious injury or property damage can result if proper precautions are not taken.

CAUTION – Indicates some injury or property damage may result if proper precautions are not taken.

Authorized Service Personnel – Factory trained personnel or personnel having working knowledge of electrical, plumbing and machine (appliance) maintenance procedures.

Safety

DANGER

- Please read these instructions completely before starting the installation or performing any service. Failure to follow the instructions and safety precautions in this manual can result in serious injury or death.
- After installation, keep these instructions in a safe location for future reference.
- Electric supply must be identical in voltage, cycle, and phase to that specified on nameplate.
- Electrical supply must have Ground Fault Circuit Interrupter (GFCI) protection.
- A means for disconnecting electrical supply to the unit must be incorporated in the fixed wiring in accordance with wiring rules. This is to allow electrical disconnection of the unit from electrical supply after installation.

WARNING

- For use with clean, clear potable drinking water only. Do not use with water that is microbiologically unsafe or of unknown quality without adequate disinfection before the system.
- Installation and connection to water and electrical mains must be in compliance with local and national laws.
- All Installation and Service work must be performed by an authorized service personnel.

CAUTION

- This appliance can be used by children aged from 8 years and above and persons with reduced physical, sensory, or mental capabilities or lack of experience and knowledge if they have been given supervision or instructions concerning use of the appliance in a safe way and understand the hazards involved. Children shall not play with the appliance. Cleaning and user maintenance shall not be made by children without supervision.
- To prevent a metallic taste or increased metal content in the water due to an electrolysis process caused by electrical feedback from the grounding of electrical equipment to water supply and water waste mains, connect to these mains using non-conductive materials. The provided in-line strainer meets this requirement.

Installation

For correct and safe installation, please read these instructions completely.

DANGER

- All Installation work must be performed by an authorized service personnel.
- Disconnect electrical supply serving the Installation area to reduce risk of electrocution.
- Unit not suitable for installations where water jets could be used.

WARNING

- Shut off water supply serving the Installation area to reduce risk of water damage.
- Ensure proper ventilation by maintaining clearance from cabinet louvers to wall on each side of Cooler as specified in Rough-In.
- Never wire compressor directly to electrical supply.
- Thoroughly flush all water lines and fittings of all foreign matter before connecting to Cooler.
- Warranty is void if Installation is not made in accordance with current Manufacturing instructions.

CAUTION

- Hose-sets are not to be used for connecting to water mains.
- If inlet pressure is above 100 psig (0.69 MPa), a pressure regulator must be installed in water supply line. Any damage caused by reason of connecting this product to water supply line pressure outside it's rated pressure, is not covered by warranty.
- Tools/Items required but not provided.
 - o Water Shut-off Valve with 3/8" (9.5mm) compression outlet.
 - o Waste Trap (non-metallic)
 - o Safety Glasses
 - o Protective Gloves
 - o Fasteners for wall type

Installation: Cooler Mounting

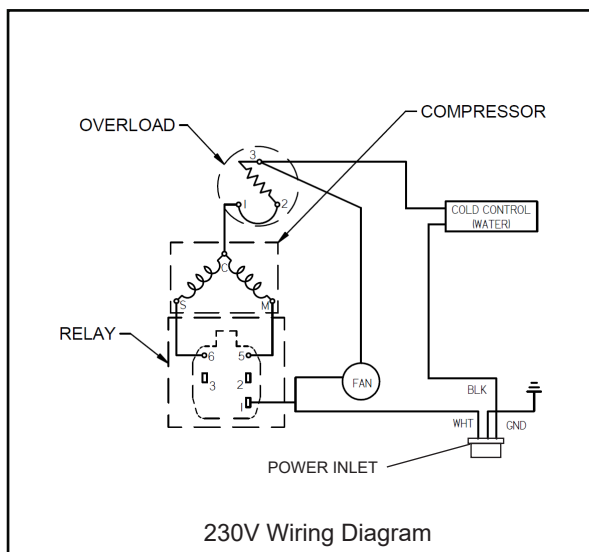
1. Remove Hanger Bracket fastened to back of cooler by removing one (1) screw.
2. Mount Hanger Bracket as shown in Figure 1.
 - NOTE: Hanger Bracket MUST be supported securely. Add fixture support carrier if wall will not provide adequate support. Anchor hanger securely to wall using all five (5) 5/16" (8mm) diameter mounting holes.
 - IMPORTANT: 4-3/4" (121mm) dimension from wall to center line of trap must be maintained for proper fit.
3. Hang Cooler on the Hanger Bracket. Be certain the Hanger Bracket is engaged properly in the slots on the cooler back as shown in Figure 1.
4. Loosen two (2) screws holding the lower front panel at the bottom of the cooler base and two (2) screws at the top using the T-25 Torx bit (Provided). Remove front panel and set aside.
5. Fasten cooler to wall using three (3) 7/16 (11.1mm) Dia. holes. See Figure 1, Item F.

Installation: Water Line connection

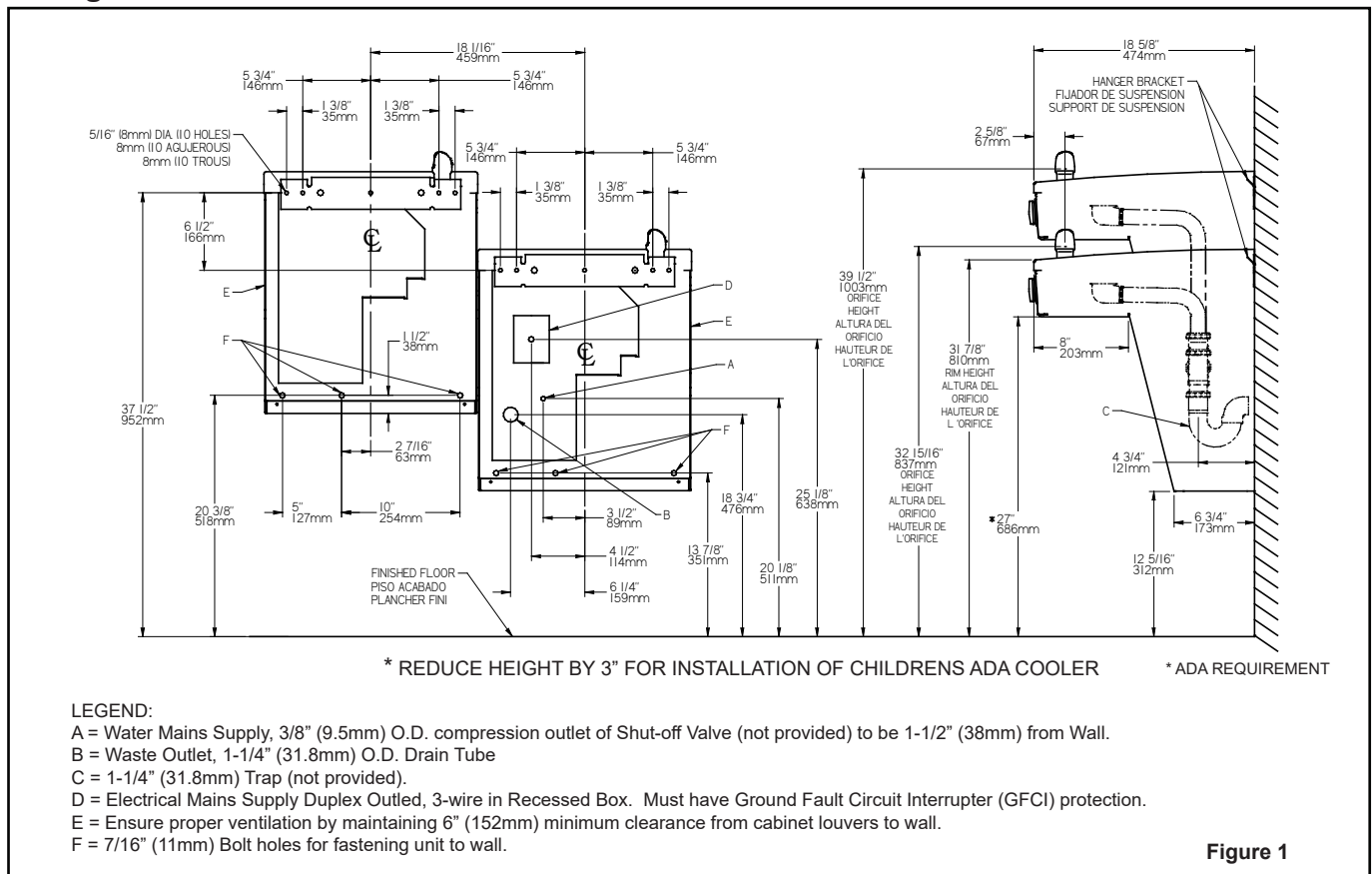
1. Ensure Mains Water Supply has Water Shut-off Valve with 3/8" (9.5mm) compression outlet.
2. Connect loose end of supplied 3/8" (9.5mm) unplated copper tube to Water Shut-off Valve. Other end of tube should be connected to inlet of in-line strainer (Item 47). If not connected, simply insert into inlet fitting of strainer until positive stop - approximately 3/4" (19mm).
 - NOTE: If 3/8" (9.5mm) copper tube must be cut for proper fit, remove all burrs from the outside of tube and re-flush before use.
3. Install waste trap. Remove the slip nut and gasket from the waste trap and install them on the cooler waste line making sure that the end of the waste line fits into the waste trap. Assemble the slip nut and gasket to the waste trap and tighten securely.
4. It is recommended that the waste trap be insulated to avoid excessive condensation due to chilled water running through the waste trap.
5. Turn on building water supply and open Water Shut-off Valve. Check all connections for leaks and correct any found.

Installation: Electrical connection

1. Rotate fan to insure proper clearance and free fan action.
2. Connect modular (C-13) end of International Power Cord Set (sold separately) into Power Inlet on Cooler and ensure plug-end reaches electrical outlet. Do not plug into electrical outlet!



Rough-In: VRCTL8



Operation: Start-Up

1. Turn on the building water supply and check all connections for leaks.
2. Purge air from all water lines by activating both pushbuttons with your hand.
3. Recheck all water and drain connections with water flowing through system.
4. Rotate fan to ensure proper clearance and free fan action.
5. Connect plug-end of International Power Cord Set (sold separately) into electrical outlet.
6. After verifying that the water cooler is properly connected and operational, replace and reattach the cooler front panel by tightening (4) screws.

Service

For proper and safe servicing, please read these instructions completely.

DANGER

- All Service and Maintenance must be performed by an authorized service personnel.
- Disconnect electrical supply to the unit before any service work to reduce risk of electrocution.
- Shut off water supply serving the unit before any service work to reduce risk of water damage.

CAUTION

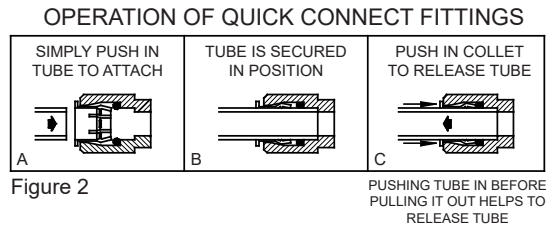
- Tools/Items required but not provided, for Servicing:
 - o Safety Glasses
 - o Protective gloves
 - o Flathead Screwdriver

Service: Adjustments

1. **Temperature Control:** Factory set for 50°F ± 5° (10°C ± 2.8°) water under normal conditions. To adjust water temperature, turn screw on Item No. 8 clockwise for colder, counter clockwise for warmer.
2. **Water Stream Height:** Stream height is factory set at 35 psig (0.24 MPa). If supply pressure varies greatly from this, adjust screw using th access hole in the pushbutton by inserting a flathead screwdriver. Clockwise adjustment will raise stream and Counterclockwise adjustment will lower stream. For best adjustment, stream should hit basin approximately 6-1/2" (165mm) from bubbler on the downward slope of the basin.
3. **Water coming out of Bubbler continuously:** When this occurs at the end of the compressor cycle, turn the cold control warmer (counterclockwise) ¼ turn.

Service: Inspection/Cleaning

- Inspect Cooler twice each year for proper operation and performance.
 - Inspection of the unit will require disconnecting electrical supply, removal of panels, etc. and reassembly and return to service practices.
- Cleaning:** Warm, soapy water or mild household cleaning products can be used to clean the exterior panels. Extra caution should be used to clean the mirror finished stainless steel panels. They can be easily scratched and should only be cleaned with mild soap and water or Windex glass cleaner and a clean, soft cloth. Use of harsh chemicals or petroleum based or abrasive cleaners will void the warranty.
 - Bubbler:** Mineral deposits on the orifice can cause water flow to spurt or not regulate. Mineral deposits may be removed from the orifice with a small round file not over 1/8" (3 mm) diameter or small diameter wire.
 - CAUTION : DO NOT file or cut orifice material. Care must be taken not to damage the orifice(s)
 - Condenser Fan Motor:** Confirm condenser fan turns freely. If the condenser fan does not spin freely, have an authorized service personnel replace.
 - Ventilation:** Cabinet louvers and condenser fins should be periodically cleaned with a brush, air hose or vacuum cleaner. Cleaning should be done twice each year or more frequently if needed due to environment. Excess dirt or poor ventilation can cause no cold water and compressor cycling on the compressor overload protector.
 - Water Flow:** Confirm proper water flow. If water flow is slow, inspect filter or inline strainer for restriction. Replace filter cartridge if required. Disassemble inline strainer and clean if required.
 - Lubrication:** Motors are lifetime lubricated.
 - Actuation of Quick Connect Water Fittings:** Cooler is provided with lead-free connectors which utilize o-ring water seal. To remove tubing from the fitting, relieve water pressure, push in on the gray collar before pulling on the tubing. To insert tubing, push tube straight into fitting until it reaches a positive stop, approximately 3/4" (19mm). See Figure 2.



Service: Inspection/Replacement

- Inspect Cooler twice each year for proper operation and performance.
 - Inspection of the unit will require disconnecting electrical supply, removal of panels, etc. and reassembly and return to service practices.
- Lower Front Panel and Front Dispenser Panel:** To access the refrigeration system and plumbing connections, loosen two (2) screws holding the lower front panel at the bottom of cooler base and two (2) screws at the top using the provided T-25 Torx bit. To gain access to the regulator, bubbler, and push button assembly remove (2) screws on the underside of the front dispenser panel (Item 34) using the provided T-20 Torx Bit. Tilt the bottom of the panel toward you, and slide the panel down to remove it.
 - Bubbler:** To remove the bubbler, first disconnect the electrical and water supply. The underside of the bubbler can be reached through the front dispenser panel (Item 34). Follow the above instructions to remove the Front Dispenser Panel. To remove the bubbler, loosen bubbler nipple from the underside of the bubbler (Item 4) and remove the tubing from the quick connect fitting. See Figure 2. When installing replacement bubbler, tighten nipple only to hold parts snug in position. Do Not Overtighten. After servicing, replace the Front Dispenser panel and two (2) screws.
 - Cleaning Strainer:** To clean the strainer (Item 47), first shut off water supply and remove strainer from waterline. Remove plug and screen. Clean screen and rinse thoroughly with water. Insert screen back into strainer and reassemble. Lubricate O-Ring with food grade pharmaceutical mineral oil. Do not overtighten plug or fittings. See figure 3.

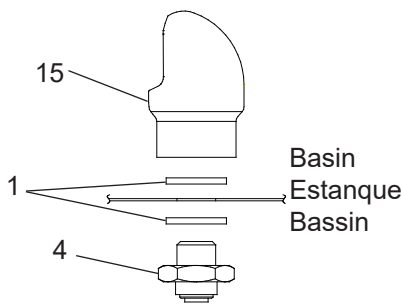
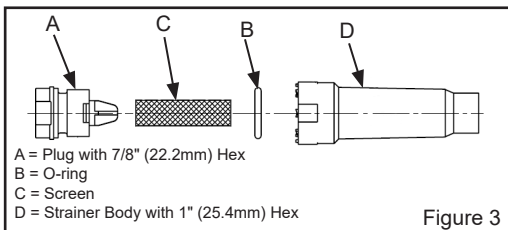
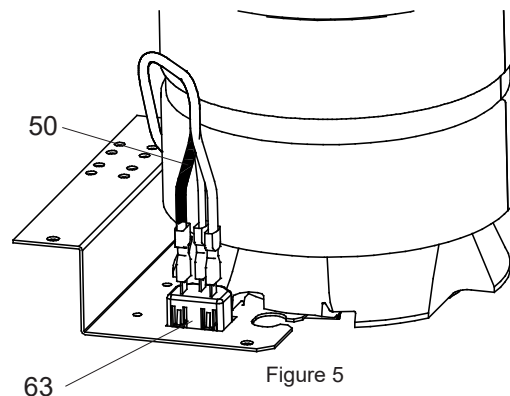


Figure 4
 VANDAL RESISTANT BUBBLER DETAIL



220V Power Inlet Detail

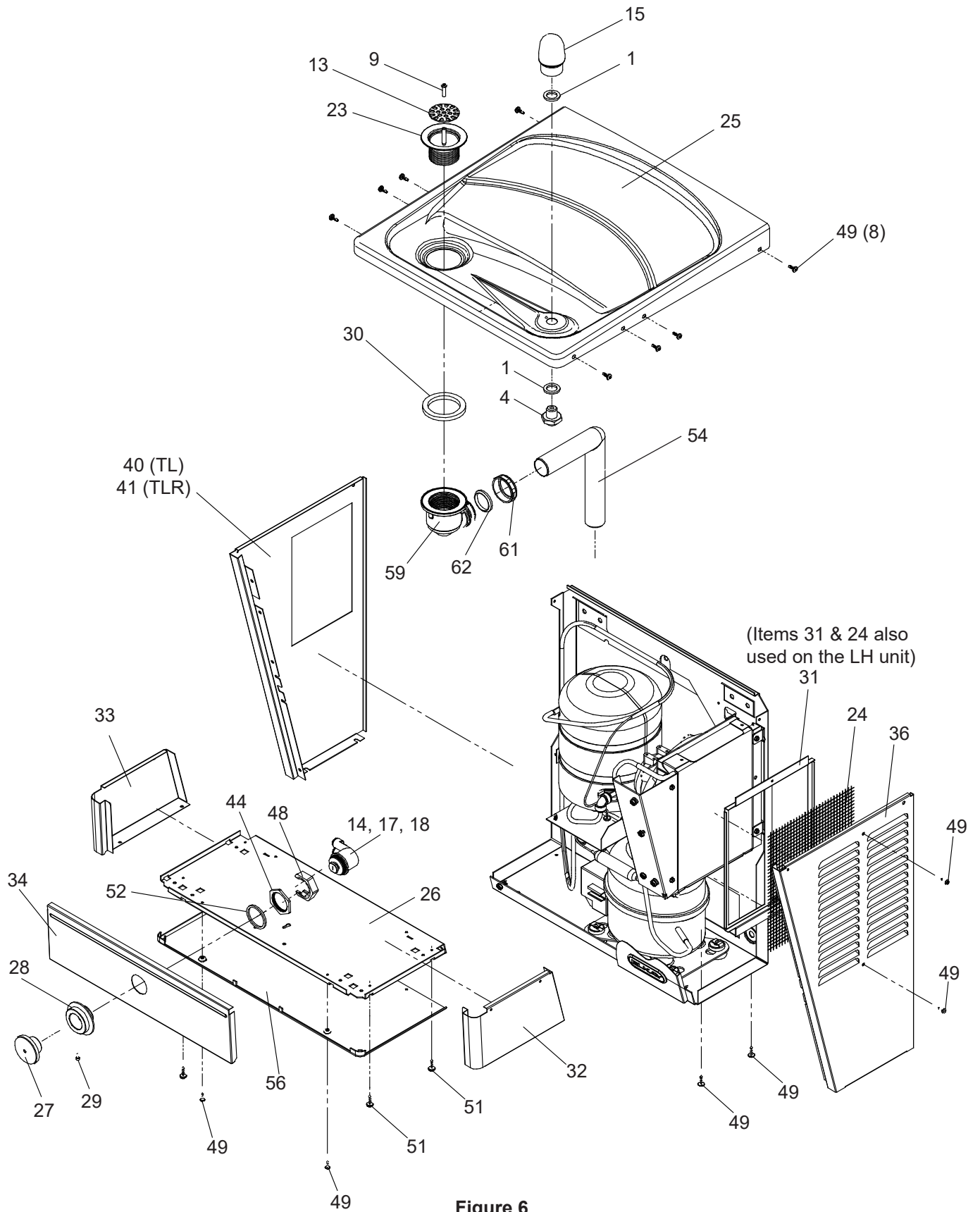


Figure 6

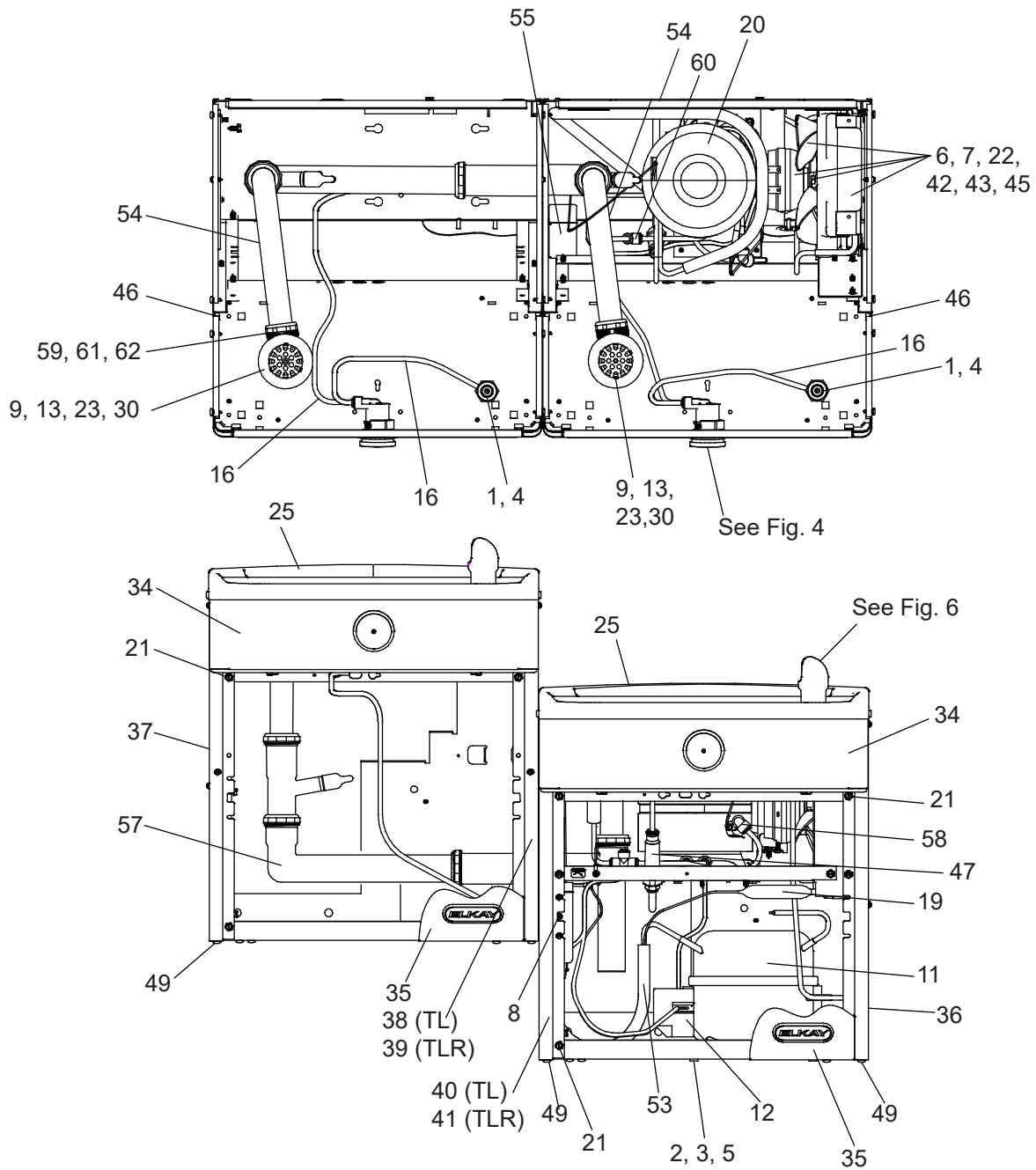


Figure 7

Replacement Parts: 230V Parts List		
ITEM NO.	PART NO.	DESCRIPTION
1	56305C	Gasket - Bubbler
2	100806740570	Grommet - Compressor Mtg.
3	101474551730	Stud - Compressor Mtg.
4	15009C	Nipple - Bubbler
5	19037000	Clip - Compressor Mtg.
6	30664C	Fan Blade
7	31431C	Fan Motor
8	35839C	Cold Control
9	110868642550	Screw - #10-24 x .75 Socket Hd.
10	35870C	Power Cord
11*	1000002147	Compressor Serv. Pak (50Hz)
12	98751C	Kit - Relay/OverLoad/Cover (50Hz)
13	160270508640	Strainer - Bright
14	50986C	Holder - Regulator
15	45866C	Bubbler Assy.
16	56092C	Tubing - Poly (Cut To length)
17	15005C	Retaining Nut
18	61313C	Regulator
19	66703C	Drier
20	66810C	Evaporator Assembly
21	70002C	Screw - #10 x 1/2" Lg. HHSM
22	70009C	Screw - Fan Motor
23	600985451640	Drain Plug 1-1/2
24	28617C	Screen - VR
25	28963C	Basin - Stainless Steel
26	22897C	Panel - Bottom Dispenser
27	45662C	Button - Push
28	45737C	Sleeve - Push Button
29	75672C	Cap Screw
30	100147140560	Gasket - Drain
31	28596C	Panel - Screen
32	See Color Table	Panel - RH Dispenser Side
33	See Color Table	Panel - LH Dispenser Side
34	See Color Table	Panel - Dispenser Front
35	See Color Table	Panel - Front Lower
36	See Color Table	Panel - RH Rear
37	See Color Table	Panel - LH Rear
38	See Color Table	Panel - RH Rear TL
39	See Color Table	Panel - RH Rear TLR
40	See Color Table	Panel - LH Rear TL
41	See Color Table	Panel - LH Rear TLR
42	66743C	Condenser
43	56237C	Shroud Fan
44	40045C	Hex Nut
45	70018C	Hex Nut - Fan Blade
46	75524C	Clip (Front & Rear Panels)
47	55996C	Strainer
48	45736C	Half Nut - Regulator
49	0000001190	Kit - #10 Pinned Torx Screws/T-25 Bit
50	35827C	Wire Assembly
51	70864C	Screw - #8 x .62 Torx/Slot
52	56033C	Washer
53	66576C	Heat Exchanger
54	45929C	Tube - Drain
55	27124C	Cover - Cold Control
56	55931C	Cover - Dispenser Bottom
57	1000004447	Kit - Drain Tube Assy.
58	75583C	Elbow
59	56121C	Elbow - Drain
60	70682C	Tee 1/4
61	75588C	Nut - 1-1/4" Slip Joint
62	75589C	Gasket
63	35826C	Power Inlet
NS	75520C	Torx Tool - T25
NS	28551C	Hanger Bracket

*Includes Relay & Overload. If under Warranty, replace with same Compressor used in original assembly.
 NOTE: All correspondence pertaining to any of the above water cooler or orders for repair parts MUST include Model number and Serial number of cooler, name and part number of replacement part.
 NOTE: "NS" indicates item is not shown on manual.

NS = NOT SHOWN

Refrig. Unit	COLOR TABLE	Item No. 32 Part No.	Item No. 33 Part No.	Item No. 34 Part No.	Item No. 35 Part No.	Item No. 36 Part No.	Item No. 40 Part No.	Item No. 41 Part No.
	PANEL COLOR							
	Stainless Steel	28519C	28522C	28516C	22955C	28525C	28536C	28562C

Left Unit	COLOR TABLE	Item No. 32 Part No.	Item No. 33 Part No.	Item No. 34 Part No.	Item No. 35 Part No.	Item No. 37 Part No.	Item No. 38 Part No.	Item No. 39 Part No.
	PANEL COLOR							
	Stainless Steel	28519C	28522C	28516C	22955C	28528C	28539C	28559C

For Replacement Parts, contact your local distributor or call 1.800.834.4816

Elkay Manufacturing Co. 2222 Camden Court – Oak Brook, IL 60523 U.S.A – 630.574.8484 – www.elkay.com