

# GRANDERA

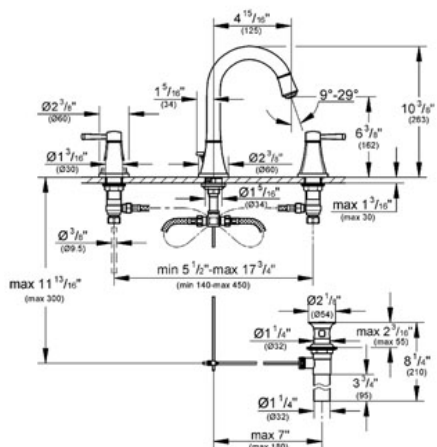
## Three-hole basin mixer 1/2" M-Size

MODEL # 20419

Pure Freude an Wasser



GROHE America, Inc | 200 North Gary Avenue, Suite G, Roselle, IL 60172  
Phone: +1 (800) 444-7643 | Fax: +1 (800) 225-2778 | us-customerservice@grohe.com



**Product Description:**  
Three-hole basin mixer 1/2"  
M-Size

### Standard Specification:

- GROHE StarLight® finish
- GROHE EcoJoy® technology for less water and perfect flow
- GROHE AquaGuide® adjustable aerator 5.7 l/min
- Valves hot/cold with 1/2" cartridge (90°)
- Pressure resistant flexible connection hoses (between spout and side valves)
- 1 1/4" pop-up waste set
- Max Flow Rate 1.5 gpm (5.7 L/min)

### Applicable Codes & Standards:

- Energy Policy Act of 1992
- NSF 61
- ASME A112.18.1/CSA B125.1
- US Federal and State material regulations
- EPA WaterSense®
- ICC/ANSI A117.1

### Color:

- ☐ 20419 000 chrome
- ☐ 20419 EN0 Brushed Nickel

