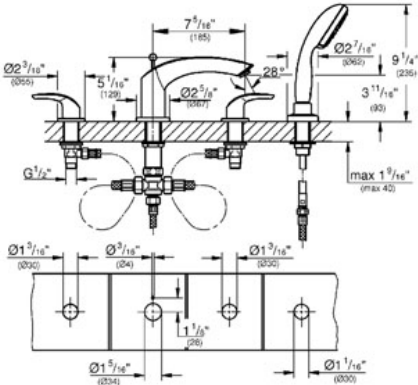


EUROSMART
 Four-hole bath combination
 MODEL # 25170

Pure Freude an Wasser



GROHE America, Inc | 200 North Gary Avenue, Suite G, Roselle, IL 60172
 Phone: +1 (800) 444-7643 | Fax: +1 (800) 225-2778 | us-customerservice@grohe.com



Product Description:
Four-hole bath combination

Standard Specification:

Consisting of:

- 1/2" ceramic cartridge (90° turn)
- Metal lever
- Bath spout with flow control and diverter
- Hand shower New Tempesta 100, 2 sprays, 2.0 gal (26 047 000)
- Metal shower hose
- Stainless Steel Braided Flexible Supplies
- **GROHE StarLight®** finish

Applicable Codes & Standards:

- Energy Policy Act of 1992
- ASME A112.18.1/CSA B125.1

Color:

- 25170 002 GROHE StarLight® Chrome
- 25170 EN2 Brushed Nickel inf