

# LADYLUX3 CAFÉ TOUCH

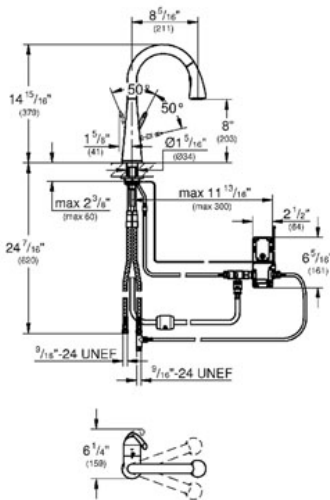
## Pull-Down kitchen faucet with touch technology

MODEL # 30205

GROHE America, Inc | 200 North Gary Avenue, Suite G, Roselle, IL 60172  
Phone: +1 (800) 444-7643 | Fax: +1 (800) 225-2778 | us-customerservice@grohe.com

Pure Freude an Wasser

GROHE



### Product Description:

Pull-Down kitchen faucet with touch technology

### Standard Specification:

- GROHE SilkMove® ceramic cartridge
- GROHE StarLight® finish
- GROHE SuperSteel Infinity Finish™
- Single hole installation
- **Touch: activation of cold water via skin contact**
- 6 V lithium-battery supply (type CR-P2)
- **CE approved**
- Indication of battery status through different pulses of water
- Safety shut down circuit (when battery nearly empty)
- **Solenoid valve**
- Automatic safety stop after 60 sec.(factory set)
- Type of protection IP 44
- **SpeedClean** anti-lime system
- Swivel Spout
- Swivel area 360°
- Adjustable flow rate limiter
- **Pull-out locking dual spray control - switches back and forth between regular flow and spray**
- Automatic returning
- Integrated non-return valve
- Locking Push Button Control - to switch from regular flow to spray
- Automatic return to aerator
- Stainless Steel Braided Flexible Supplies
- Quick installation system
- **Protected against backflow**

### Applicable Codes & Standards:

- Energy Policy Act of 1992
- NSF 61
- ASME A112.18.1/CSA B125.1
- US Federal and State material regulations
- ICC/ANSI A117.1

### Color:

- 30205 DC0 supersteel
- 30205 000 chrome

GROHE America, Inc | 200 North Gary Avenue, Suite G, Roselle, IL 60172  
Phone: +1 (800) 444-7643 | Fax: +1 (800) 225-2778 | [us-customerservice@grohe.com](mailto:us-customerservice@grohe.com)