

RAPIDO C

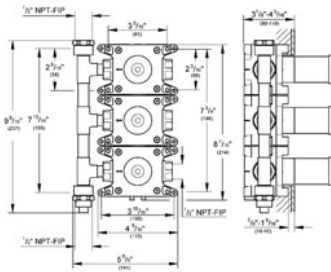
Rough-in for triple volume control 27 625

MODEL # 35032

Pure Freude an Wasser



GROHE America, Inc | 200 North Gary Avenue, Suite G, Roselle, IL 60172
 Phone: +1 (800) 444-7643 | Fax: +1 (800) 225-2778 | us-customerservice@grohe.com



ADA

Product Description:
 Rough-in for triple volume control 27 625

- Standard Specification:**
- For grid installation of Grohtherm Custom Shower system and GrohFlex™
 - Build-in box with removable protection cover
 - For masonry and drywall installation
 - Fixing points for front and back wall
 - Body of DR brass
 - Pre-assembled ceramic headpart 3/4"
 - 3 inlets and 3 outlets
 - Connection thread 1/2" NPT
 - Max Flow Rate 12gpm at 45psi on each outlet
 - 3/4" ceramic cartridge (90° turn)

- Applicable Codes & Standards:**
- Energy Policy Act of 1992
 - ASME A112.18.1/CSA B125.1
 - ICC/ANSI A117.1

Color:
 □ 35032 000

