

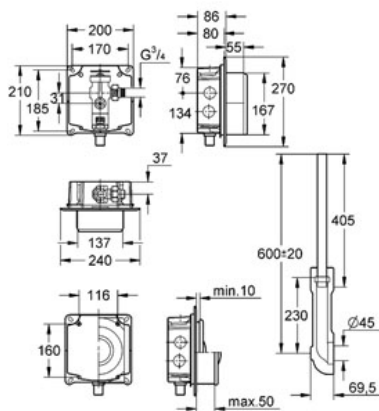
# Flush valve for WC

MODEL # 37153

*Pure Freude an Wasser*



GROHE America, Inc | 200 North Gary Avenue, Suite G, Roselle, IL 60172  
Phone: +1 (800) 444-7643 | Fax: +1 (800) 225-2778 | [us-customerservice@grohe.com](mailto:us-customerservice@grohe.com)



## Product Description:

### Flush valve for WC

## Standard Specification:

- Concealed installation
- 3/4"
- **Stop valve**
- **1.6 - 2.4 gal** adjustable
- Flow pressure range from 18 - 75 psi
- With flow rate adjustment
- Low noise (group I acc. to German /Noise Specification P-IX 2835/I)
- DIN DVGW 466
- Box for concealed installation with flush elbow
- Flush pipe (adjustable in length)
- **Without wall plate/actuation**

## Color:

□ 37153 000