

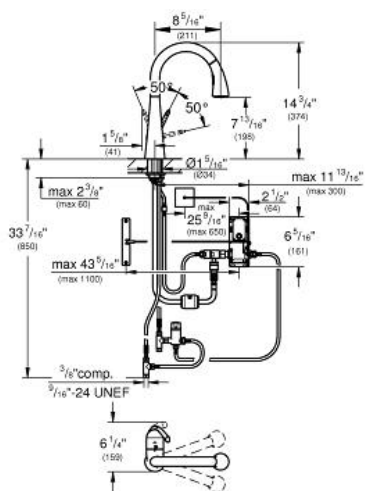
# LADYLUX FOOT CONTROL Electronic Single handle

MODEL # 30313

*Pure Freude an Wasser*

**GROHE**

GROHE America, Inc | 200 North Gary Avenue, Suite G, Roselle, IL 60172  
Phone: +1 (800) 444-7643 | Fax: +1 (800) 225-2778 | us-customerservice@grohe.com



## Product Description: Electronic Single handle

### Standard Specification:

- Foot control: activation of water via contact with sensor
- 6 V lithium-battery supply (type CR-P2)
- **CE approved**
- Solenoid valve
- Fixed value mixing valve
- Automatic safety stop after 60 sec. (factory set)
- Adjustable flow rate limiter
- **GROHE SilkMove®** ceramic cartridge
- **Pull-out Dual Spray Control - switches back and forth between regular flow and spray**
- **Locking Push Button Control - to switch from regular flow to spray**
- Automatic return to aerator
- Swivel Spout
- Swivel area 360°
- Protected against backflow
- Stainless Steel Braided Flexible Supplies
- Quick installation system

### Color:

- 30313 000 chrome
- 30313 DC0 supersteel