



## Serpentine Bronze™ Intaglio®

Drop-in Bathroom Sink

**K-14234-SP**

### Features

- Vitreous china.
- Drop-in.
- Oval basin.
- Without overflow.
- No faucet holes; requires wall- or counter-mount faucet.
- KOHLER Artist Editions designs.
- Serpentine Bronze™ design.
- 17" (432 mm) x 14" (356 mm)

### Recommended Accessories

K-9018 P-Trap

### Components

Additional included component/s: Adjustable linkage.



**ADA**

### Codes/Standards

ASME A112.19.2/CSA B45.1

ADA

ICC/ANSI A117.1

### KOHLER® One-Year Limited Warranty

See website for detailed warranty information.

### Available Color/Finishes

*Color tiles intended for reference only.*

Color	Code	Description
-------	------	-------------



G9	Sandbar
----	---------

USA/Canada: 1-800-4KOHLER (1-800-456-4537)

Kohler Co. reserves the right to make revisions without notice to product specifications.

For the most current Specification Sheet, go to [www.kohler.com](http://www.kohler.com).

12-20-2016 03:55

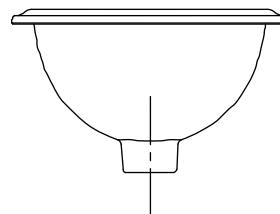
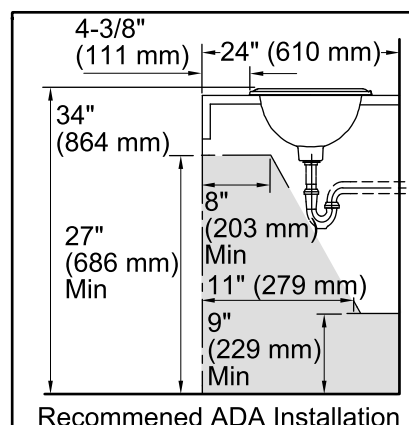
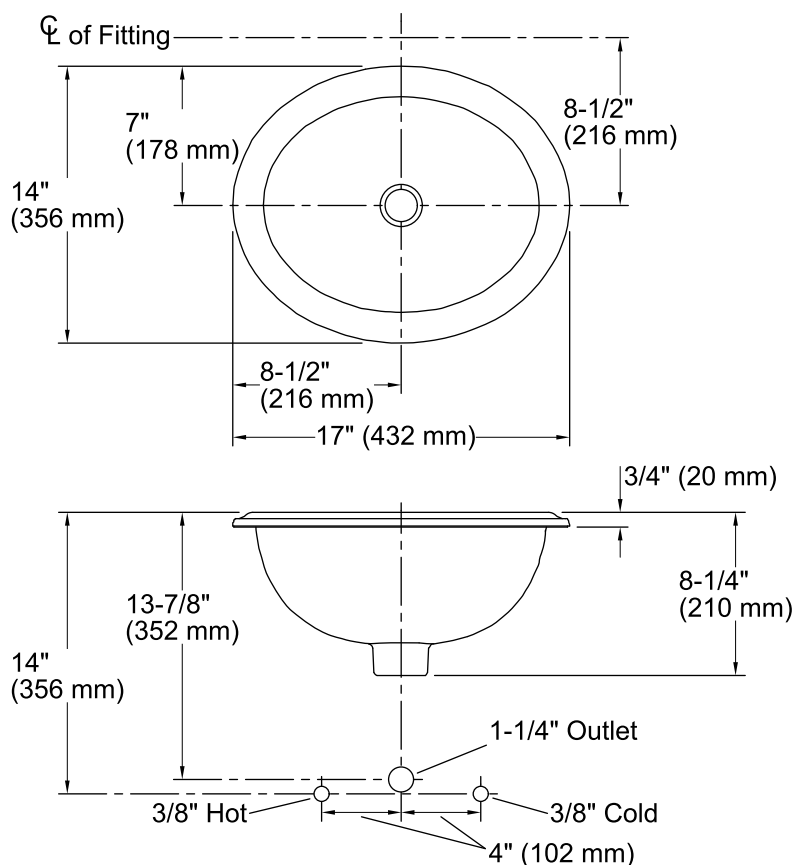
THE BOLD LOOK  
OF **KOHLER®**

# KOHLER®

## Serpentine Bronze™ Intaglio®

Drop-in Bathroom Sink

**K-14234-SP**



### Technical Information

All product dimensions are nominal.

Bowl configuration: Single

Installation: Above-counter

Bowl area (Only) Length: 13-7/8" (352 mm)  
Width: 10-7/8" (276 mm)  
Water depth: 6-1/8" (156 mm)

Drain hole: 1-3/4" (44 mm)

Template: 116213-7, required, included

### Notes

Install this product according to the installation instructions.

Spout must be 4-1/2" (114 mm) long (min.) for adequate clearance into sink.

**NOTICE:** Countertop manufacturer or cutter must use the cutout template provided with the product, or a current one provided by Kohler Co. (call 1-800-4-KOHLER). Kohler Co. is not responsible for cutout errors when the incorrect cutout template is used.

ADA compliant when installed to the specific requirements of these regulations.