



Kingston™
Wall-Mount Bathroom Sink
K-2005-R

Features

- With hanger.
- With overflow.
- Drilled for concealed arm carrier.
- 4" (102 mm) centers.
- Soap dispenser hole on right.
- 21-1/4" (540 mm) x 18-1/8" (460 mm).

Material

- Vitreous china.

Installation

- Wall-mount

Recommended Accessories

K-8998 P-Trap

Components

Additional included component/s: Hanger.



ADA

CSA B651

OBC

Codes/Standards

ASME A112.19.2/CSA B45.1

ADA

ICC/ANSI A117.1

CSA B651





OBC

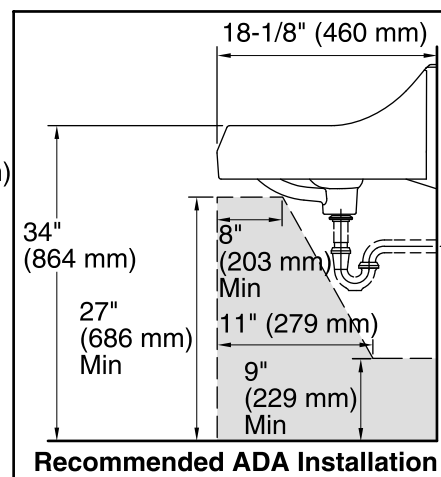
KOHLER® One-Year Limited Warranty

See website for detailed warranty information.

Available Color/Finishes

Color tiles intended for reference only.

Color	Code	Description
	0	White
	96	Biscuit
	47	Almond
	7	Black Black™



ADA, OBC, CSA B651 compliant when installed to the specific requirements of these regulations.