



**Camber®**  
Countertop Bathroom Sink  
**K-2282-1**

**Features**

- 21" (533 mm) x 20-7/8" (530 mm).
- Single faucet hole.

**Material**

- Vitreous china.

**Installation**

- Drop-in.

**Recommended Accessories**

K-8998 P-Trap

**Components**

Additional included component/s: Adjustable linkage, and Cut-out template.



ADA

CSA B651

**Codes/Standards**

ASME A112.19.2/CSA B45.1

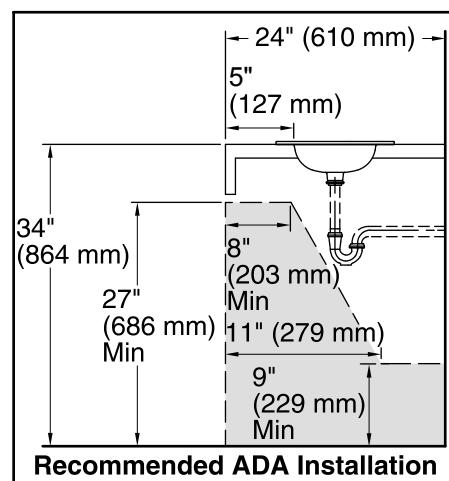
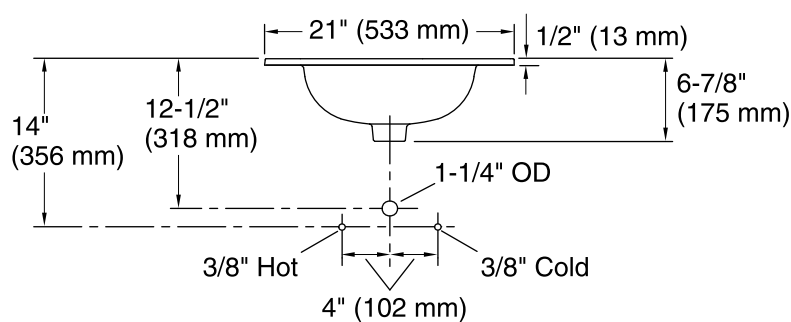
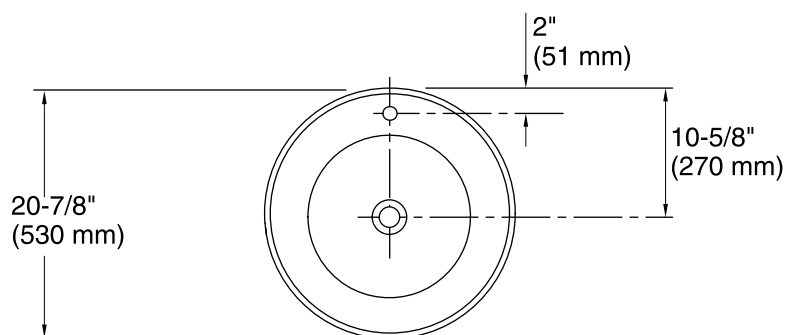
ADA

ICC/ANSI A117.1

CSA B651

**KOHLER® One-Year Limited Warranty**

See website for detailed warranty information.



## Technical Information

All product dimensions are nominal.

Bowl area	Length: 21" (533 mm)
	Width: 20-7/8" (530 mm)
	Water depth: 5" (127 mm)
Number of deck holes:	1
Faucet hole(s):	1-3/8" (35 mm)
Drain hole:	1-3/4" (44 mm)

## Notes

Install this product according to the installation instructions.

**IMPORTANT!** Due to the large size of the bathroom sink, a 21-1/8" (537 mm) wide flat surface is required for installation on a vanity top.

Supply dimensions are based on a 12" (305 mm) riser which may require cutting.

**NOTICE:** Countertop manufacturer or cutter must use the cut-out template provided with the product, or a current one provided by Kohler Co. (call 1-800-4KOHLER). Kohler Co. is not responsible for cut-out errors when the incorrect cut-out template is used

ADA, CSA B651 compliant when installed to the specific requirements of these regulations.