



Compass®

Bathroom Sink
K-2298

Features

- Vitreous china.
- Drop-in or under-mount.
- 13-1/4" (337 mm) diameter

Recommended Accessories

K-9018 P-Trap

Components

Product includes:

1193643 Basin Clamps

Additional included component/s: Adjustable Linkage.



ADA

CSA B651

OBC

Codes/Standards

ASME A112.19.2/CSA B45.1

ADA

ICC/ANSI A117.1

CSA B651

OBC

KOHLER® One-Year Limited Warranty

See website for detailed warranty information.

Available Color/Finishes

Color tiles intended for reference only.

Color	Code	Description
-------	------	-------------



0	White
---	-------

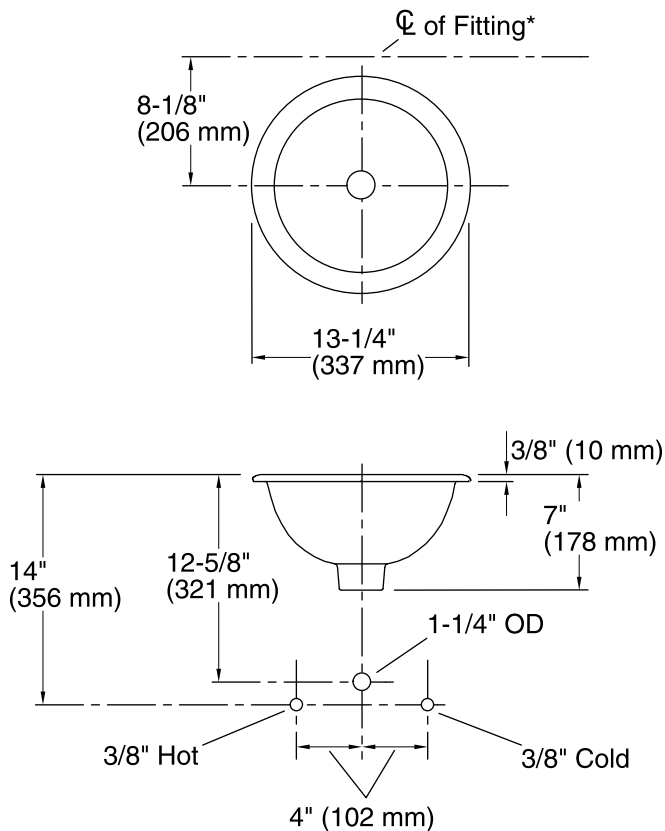


96	Biscuit
----	---------



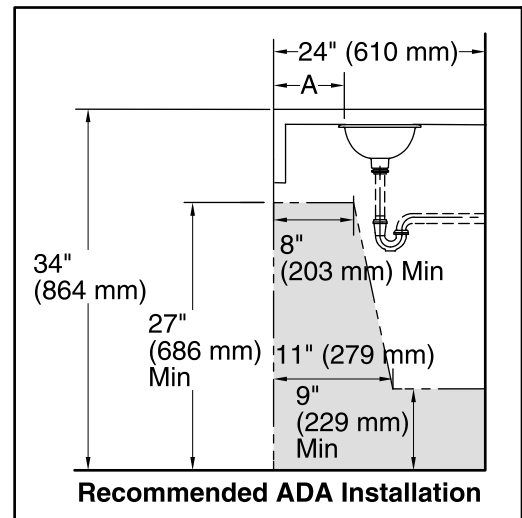
47	Almond
----	--------

Compass®
Bathroom Sink
K-2298



All product dimensions are nominal.

Installation:	Drop-In, Under-mount
Bowl area	Diameter: 10-5/8" (270 mm) Water depth: 4-3/4" (121 mm)
Drain hole:	1-3/4" (44 mm)
Template:	116214-7, required, included



	A
Drop-in	4-3/8" (137 mm)
Under-mount (shown)	4-3/8" (137 mm)

Install this product according to the installation instructions.

Spout must be a minimum of 4-1/2" (114 mm) long for adequate clearance into bathroom sink.

Supplied basin clamp assembly for under-mount installation requires 1" (25 mm) minimum countertop thickness. Installer must supply hardware for thinner countertops.

ADA, OBC, CSA B651 compliant when installed to the specific requirements of these regulations.