



WaterCove® Wading Pool®

Wading Pool® Above-counter Bathroom Sink

K-2332

Features

- Vitreous china.
- Above-counter.
- Unique shallow basin.
- No faucet holes; requires wall- or counter-mount faucet.
- 18-5/8" (473 mm) x 16-3/16" (411 mm)

Required Accessories

K-7127 Drain

or

K-7129 Drain

Recommended Accessories

K-9018 P-Trap

14407



ADA

Codes/Standards

ASME A112.19.2/CSA B45.1

ADA

ICC/ANSI A117.1




KOHLER® One-Year Limited Warranty

See website for detailed warranty information.

Available Color/Finishes

Color tiles intended for reference only.

| Color | Code | Description |
|-------|------|-------------|
|-------|------|-------------|

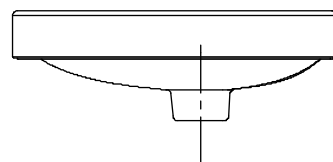
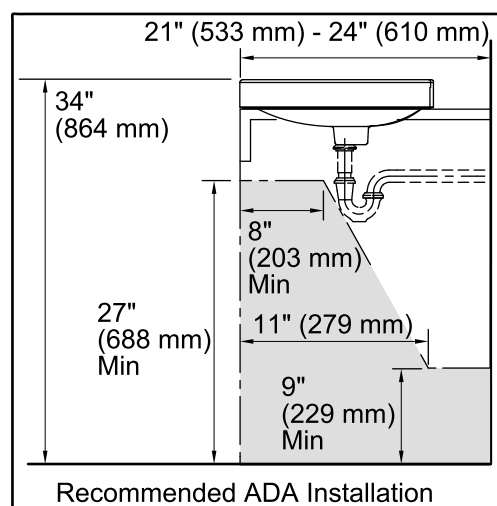
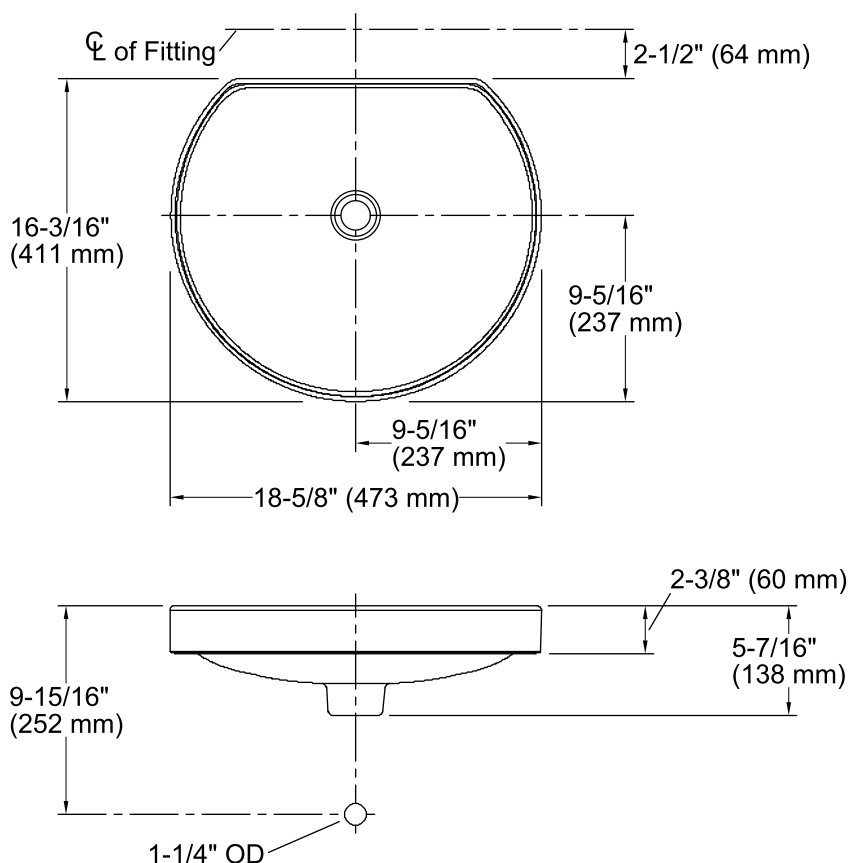
| | | |
|--|----|---------|
|  | 0 | White |
|  | 96 | Biscuit |
|  | 47 | Almond |



WaterCove® Wading Pool®

Wading Pool® Above-counter Bathroom Sink

K-2332



Technical Information

All product dimensions are nominal.

Bowl configuration: Single

Installation: Above-counter

Bowl area (Only) Length: 17-11/16" (449 mm)
Width: 15-5/16" (389 mm)
Water depth: 3-1/2" (89 mm)

Drain hole: 1-3/4" (44 mm)

Template: 1020955-7, required, included

Notes

Install this product according to the installation instructions.

Product does not have an overflow.

Choose a faucet that will provide adequate clearance and will direct the water stream to the center of the bathroom sink.

IMPORTANT! Product rests on a countertop. Consider height of product when planning the installation.

NOTICE: Countertop manufacturer or cutter must use the cut-out template provided with the product, or a current cut-out template provided by Kohler (call 1-800-4KOHLER). Kohler is not responsible for cutout errors when incorrect cut-out template is used.

ADA compliant when installed to the specific requirements of these regulations.