

## Features

- Catalyzed polyurethane provides a durable moisture-resistant finish.
- Double doors with adjustable hinges.
- Adjustable shelf.
- Two pullout storage extensions, each with adjustable shelf.
- Express™ vanities are easy to transport and set up in minutes.
- Includes cabinet hardware.

## Material

- Birch solids and paintable substrate.

## Recommended Accessories

K-3053-1 Vanity-top Bathroom Sink  
K-3053-4 Vanity-top Bathroom Sink  
K-3053-8 Vanity-top Bathroom Sink

## Optional Accessories

K-2503 Mirror



## Codes/Standards

CARB P2


## KOHLER® One-Year Limited Warranty

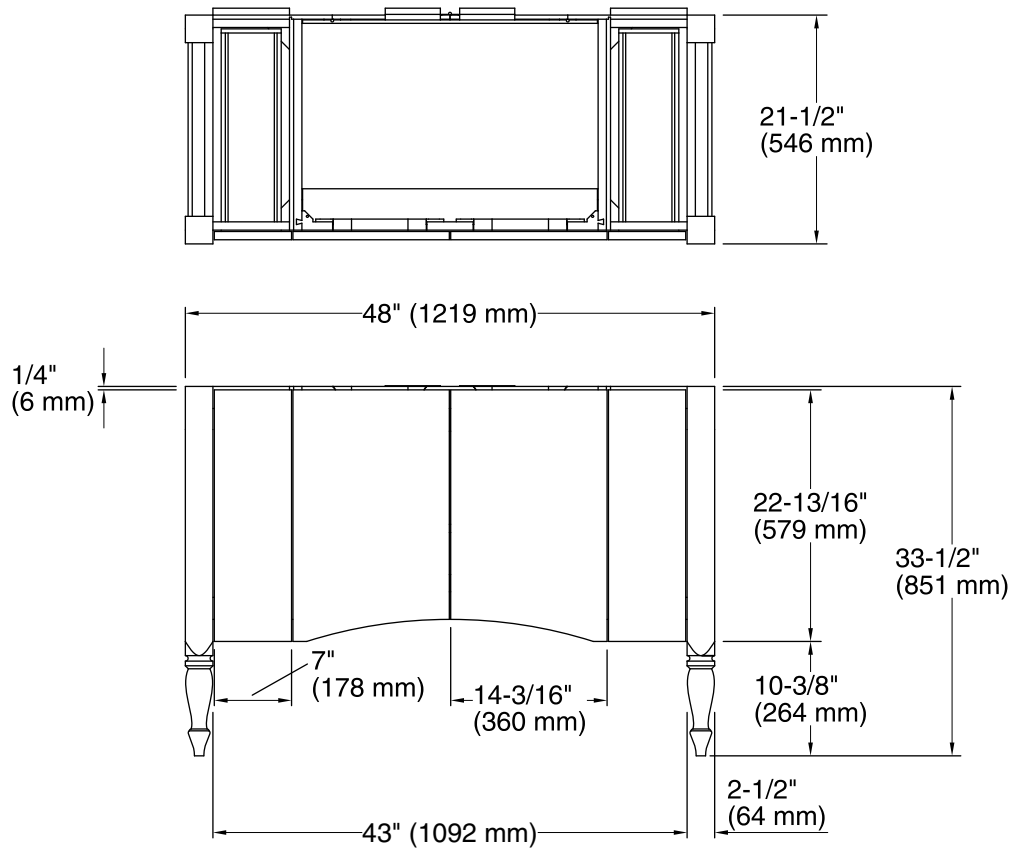
See website for detailed warranty information.

## Available Color/Finishes

*Color tiles intended for reference only.*

Color	Code	Description
-------	------	-------------

	F40	Cinder
--	-----	--------



#### Technical Information

All product dimensions are nominal.

#### Notes

Install this product according to the installation guide.