

### Features

- Catalyzed polyurethane provides a durable moisture-resistant finish.
- Double doors with adjustable hinges.
- Two pullout storage extensions, each with adjustable shelf.
- Includes cabinet hardware.
- Express™ vanities are easy to transport and set up in minutes.
- Coordinates with the Westmore mirror.

### Material

- Ailanthus solids and ash veneers.

### Recommended Accessories

K-3053-1 Vanity-top Bathroom Sink  
K-3053-4 Vanity-top Bathroom Sink  
K-3053-8 Vanity-top Bathroom Sink

### Optional Accessories

K-2504 Mirror



### Codes/Standards

CARB P2

### KOHLER® One-Year Limited Warranty

See website for detailed warranty information.

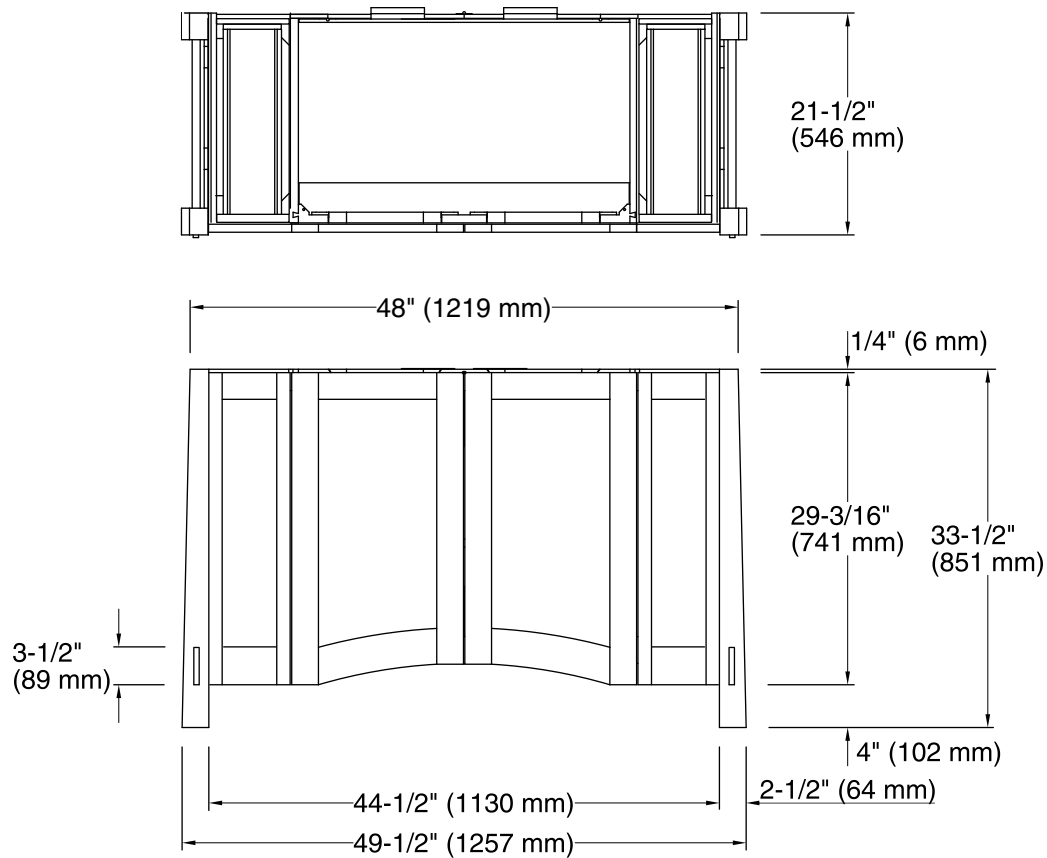
### Available Color/Finishes

*Color tiles intended for reference only.*

Color	Code	Description
-------	------	-------------



F41	Westwood
-----	----------



### Technical Information

All product dimensions are nominal.

### Notes

Install this product according to the installation guide.