

### Features

- Catalyzed polyurethane provides a durable moisture-resistant finish.
- Self-close, adjustable doors.
- Backsplash helps prevent water damage.
- Includes decorative hardware.
- Combination consists of vanity with stone top and Caxton under-mount sink.
- Coordinates with other Evandale products.

### Material

- Solid wood and veneers with stone countertop.

### Recommended Accessories

K-8998 P-Trap

### Optional Accessories

K-2746 Mirror



### Codes/Standards

CARB P2

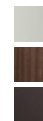
### KOHLER® One-Year Limited Warranty

See website for detailed warranty information.

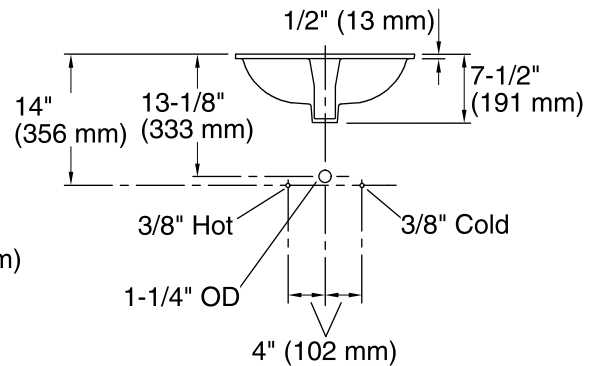
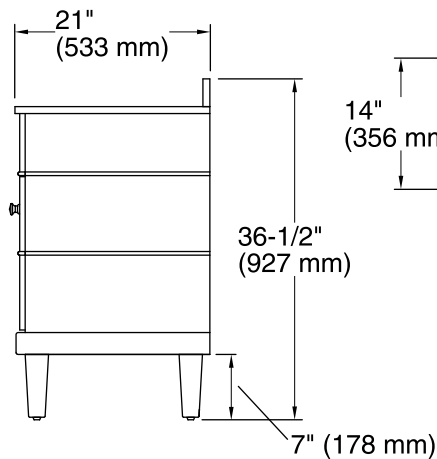
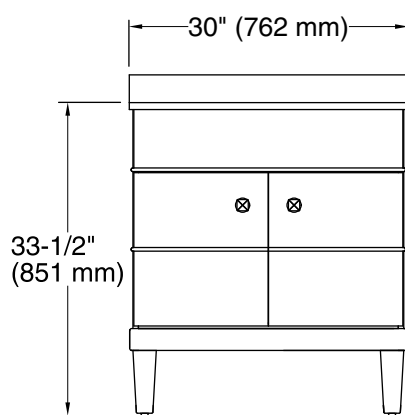
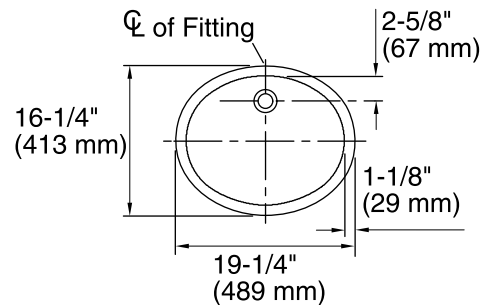
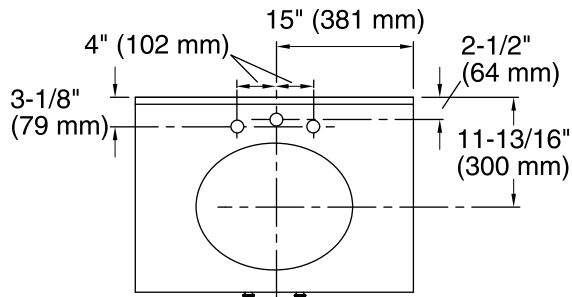
### Available Color/Finishes

*Color tiles intended for reference only.*

Color	Code	Description
-------	------	-------------



F44	Lily
F25	Sapele
F80	Cocoa



### Technical Information

All product dimensions are nominal.

### Notes

Install this product according to the installation guide.

Select the type of fastener based on the wall material. A minimum 500 lb (227 kg) load bearing fastener is recommended.