



Traverse®
Above-counter Bathroom Sink
K-2955-8

Features

- Fireclay.
- Above-counter.
- Rectangular basin.
- With overflow.
- 8-inch centers.
- Designed for installation to the K-2517 Traverse wall-hung vanity.
- 30-1/2" (775 mm) x 21-1/2" (546 mm)

Recommended Accessories

K-8998 P-Trap

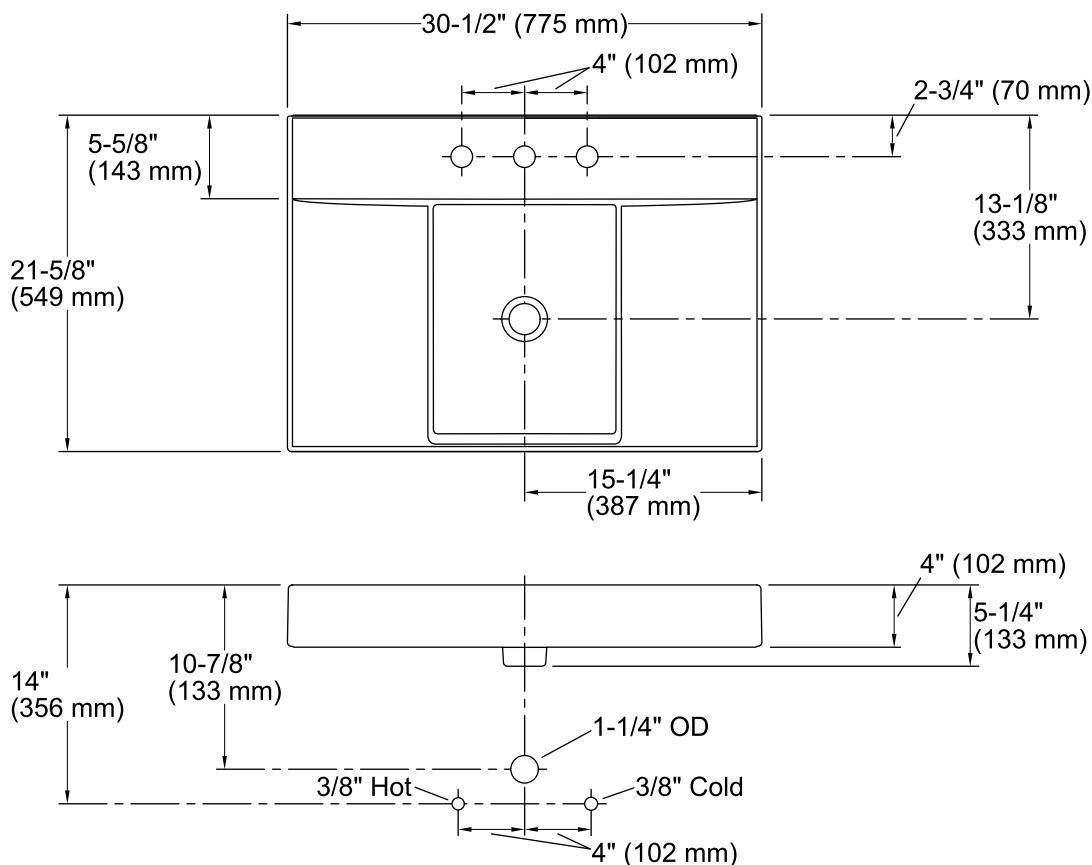


Codes/Standards

ASME A112.19.2/CSA B45.1

KOHLER® One-Year Limited Warranty

See website for detailed warranty information.



Technical Information

All product dimensions are nominal.

Bowl configuration: Single

Installation: Above-counter

Bowl area (Only) Length: 12" (305 mm)
Width: 15-1/4" (387 mm)
Water depth: 3" (76 mm)

Number of deck holes: 3

Faucet hole(s): 1-3/8" (35 mm)

Drain hole: 1-3/4" (44 mm)

Template: 1003676-7, required, included

Notes

Install this product according to the installation instructions.

NOTICE: Countertop manufacturer or cutter must use the cut-out template provided with the product, or a current one provided by Kohler Co. (call 1-800-4KOHLER). Kohler Co. is not responsible for cutout errors when incorrect cut-out template is used.

NOTE: This bathroom sink is also designed for installation to the K-2517 vanity.