



Bath Filler Spout Shank **K-411-K**

Features

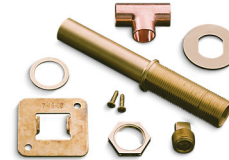
- KOHLER finishes resist corrosion and tarnish.
- Helps secure spouts firmly in place.
- For use with Purist K-14430 deck-mount bath filler spout.

Material

- Solid brass construction.

Installation

- Bath- or deck-mount.

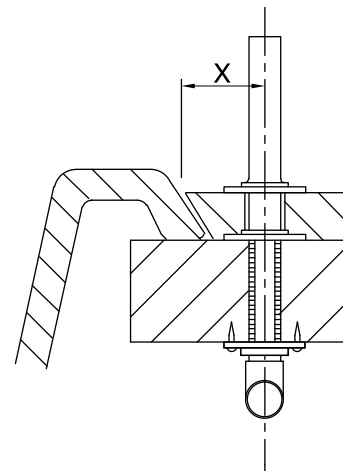
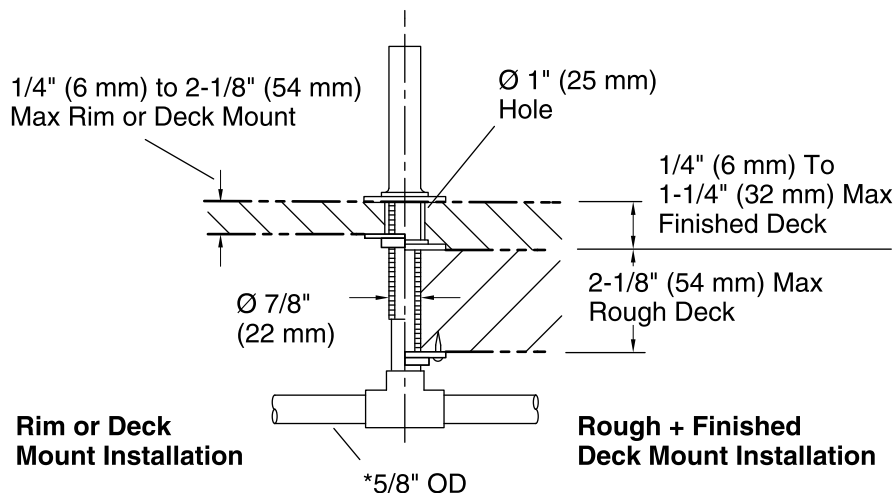


Codes/Standards

None Applicable

KOHLER® Faucet Lifetime Limited Warranty

See website for detailed warranty information.



* Indicates items to be supplied by installer.

X= Distance from centerline of spout inlet to front of spout base plus $1/2" (13 \text{ mm})$.

Technical Information

All product dimensions are nominal.

Notes

Install this product according to the installation guide.