



Sunward® 5.5' Whirlpool Bath K-6347-W1



Features

- End drain.
- Bask® heated surface creates spa-like relaxation with soothing warmth on your back, shoulders, and neck.
- Integral lumbar support and armrests for comfort.
- Textured bottom surface.
- 20" (508 mm) x 66" (1676 mm) x 42" (1067 mm)

Material

- Acrylic

Hydrotherapy

- Single-speed whirlpool offers 6 fully adjustable hydro-massage jets for water flow and direction.

Installation

- Drop-in or under-mount.

Required Accessories

K-11677 Bath Drain
738

Recommended Accessories

K-24916 Wireless Music Kit (Qty 2)



Codes/Standards

ASME A112.19.7/CSA B45.10
CSA B45.5/IAPMO Z124
UL 1795
Greenguard UL 2818 - Gold
CARB P2




KOHLER® One-Year Limited Warranty

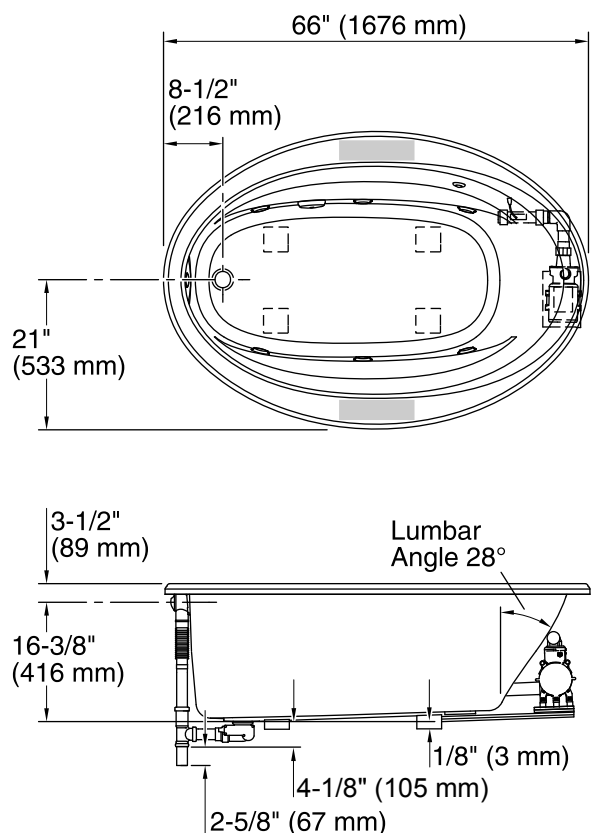
See website for detailed warranty information.

Available Color/Finishes

Color tiles intended for reference only.

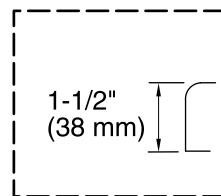
Color	Code	Description
-------	------	-------------

	0	White
	96	Biscuit
	47	Almond



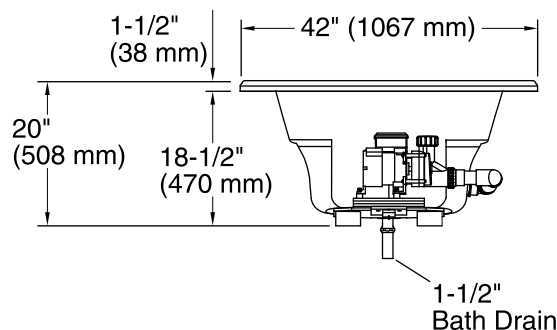
No change in measurements if connected with drain illustrated. (K-37382)

Recommended faucet area



Drop-In Rim Detail

Pump/Control Access
20" (508 mm) W x 15" (381 mm) H



Required Electrical Service

Two circuits required, protected with Class A Ground-Fault Circuit-Interrupter (GFCI) or Residual Current Device (RCD).

Pump: 120 V, 15 A, 60 Hz

Heated Surface: 120 V, 15 A, 60 Hz

Technical Information

All product dimensions are nominal.

Installation: Drop-in, Under-mount

Drain location: End

Basin area, bottom: 48-5/8" x 24-1/2" (1235 mm x 622 mm)

Basin area, top: 60" x 32-3/16" (1523 mm x 818 mm)

Minimum floor load: 34 lbs/ft² (166 kg/m²)

Water depth: 14-5/16" (364 mm)

Water capacity: 70 gal (265 L)

Template: Drop-in, 1233384-7, not required, included

Electrical component Pump: 120 V, 7.5 A, 60 Hz, 65 W

rating: Heated Surface: 120 V, 0.5 A, 60 Hz, 65 W

Pump speed: Single

Minimum flat for door: 0" (0 mm)

Notes

Measure your actual product for rough-in details.

Install this product according to the installation instructions.

The hot water supply should be 70% of the capacity of the bath or greater. Installations will vary.