

## Features

- Brass construction.
- Brass valve bodies.
- Quarter-turn washerless ceramic disc valves.
- Pop-up drain with lift rod and tailpiece.
- Variety of handle style options.
- For 4" (102 mm) centers.
- Standard aerator.
- 5-1/4" (133 mm) gooseneck spout.
- 0.5 gal/min (1.9 l/min) maximum flow rate [max at 60 psi (4.14 bar)].

## Required Accessories

K-16010-2 Standard Handles for Centerset Base Faucet

or

K-16010-3 Cross Handles for Centerset Base Faucet

or

K-16010-4 Lever Handles for Centerset Base Faucet

or

K-16010-5 Wristblade Lever Handles for Centerset Base Faucet

## Optional Accessories

1160595 .35 gpm Aerator, Medium



## Codes/Standards

ASME A112.18.1/CSA B125.1

NSF 61

NSF 372

All applicable US Federal and State material regulations

DOE - Energy Policy Act 1992

California Energy Commission (CEC)

## KOHLER® One-Year Limited Warranty

See website for detailed warranty information.

## Available Color/Finishes

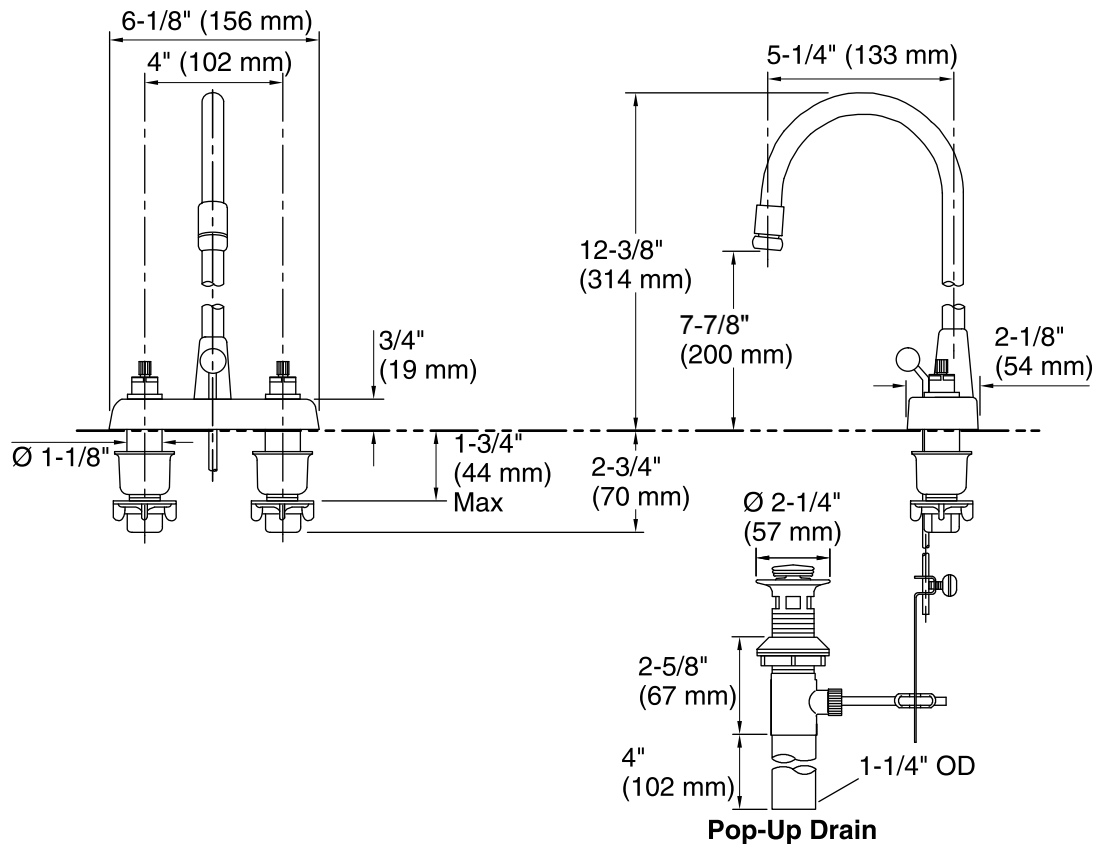
*Color tiles intended for reference only.*

| Color | Code | Description |
|-------|------|-------------|
|-------|------|-------------|



|    |                 |
|----|-----------------|
| CP | Polished Chrome |
|----|-----------------|





## Technical Information

All product dimensions are nominal.

Drain included: YES

Drain tailpiece included:

## Spout:

Spout reach: 5-1/4" (133 mm)

## Faucet:

Flow rate: 0.5 gal/min (1.9 l/min)

Pressure: 60 psi (4.1 bar)

## Notes

Install this product according to the installation guide.