

Features

- Catalyzed conversion varnish provides a durable moisture-resistant finish.
- Frameless construction with full-overlay doors.
- Three-way adjustable slow-close door hinges with 110-degree opening capability for easy cabinet access.
- Full-extension 18" depth drawers with slow-close under-mount slides for smooth opening.
- Optional adjustable shelf (sold separately).
- Coordinates with other products in the Poplin™ collection.
- Solid wood and veneers.
- Door pulls are sold separately.

Recommended Accessories

K-3052-4 Vanity-top Bathroom Sink
K-3052-8 Vanity-top Bathroom Sink
K-99679-SH12 Rollout Drawer
K-99738 Appliance Tray
K-99677-SH12 Adjustable Shelf
K-99680-SH12 Rollout Tray
K-99687 Rectangular Pull
K-99678-SH12 Adjustable Shelf with Electrical Outlets
K-99566 In-drawer Electrical Outlet
K-5451 Bathroom Vanity Top - Side Splash

Optional Accessories

K-99007 Mirrored Cabinet
K-99666 Framed Mirror
K-99669 Lap Drawer
K-99673 Two-Drawer Bridge
K-99675 Medicine Cabinet Side Kit
K-99676 Filler Strip
K-99681 Side Mount Electrical Outlets
K-99682 General Storage
K-99683 Makeup Storage
K-99684 Drawer Dividers
K-99663-15 Medicine Cabinet Surround
K-99663-24 Medicine Cabinet Surround
K-99567 Roll-out Hot Appliance Storage
K-3052-1 Vanity-top Bathroom Sink
K-99663-40 Medicine Cabinet Surround



Codes/Standards





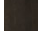



CARB P2

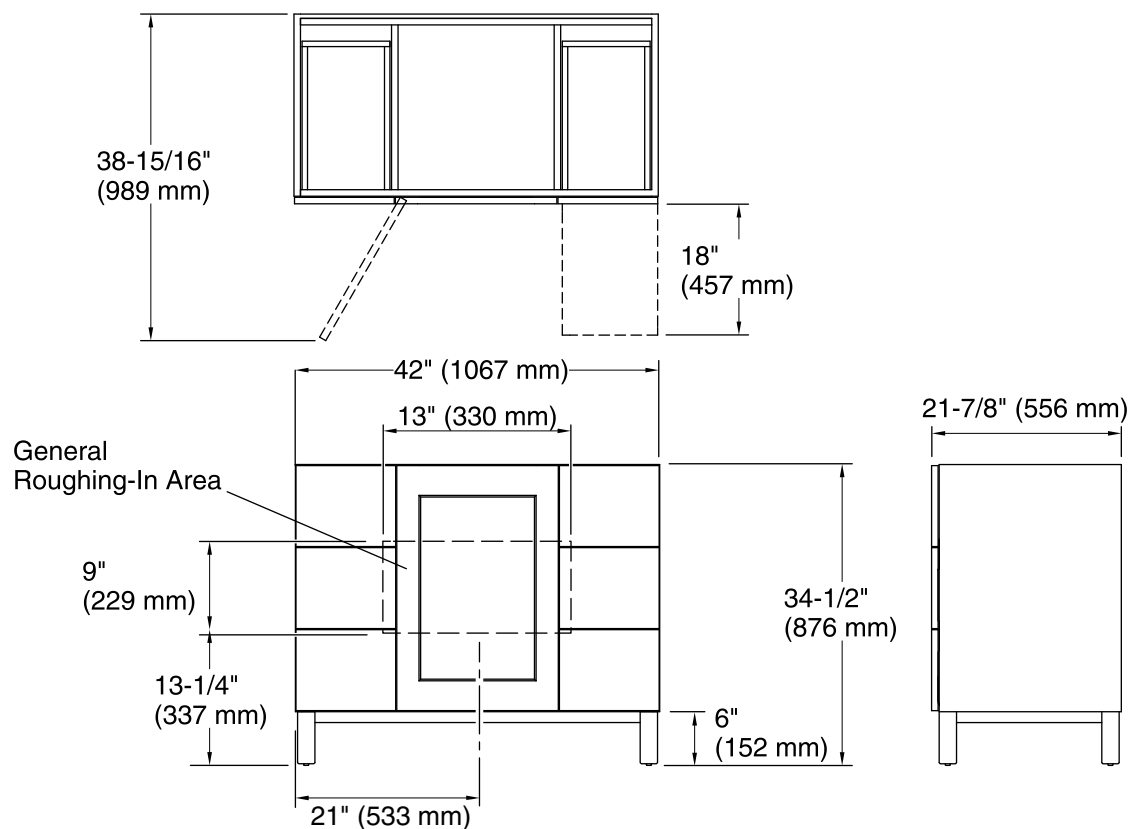
KOHLER® One-Year Limited Warranty

See website for detailed warranty information.

Available Color/Finishes

Color tiles intended for reference only.

Color	Code	Description
	1WA	Linen White
	1WF	Khaki White Oak
	1WD	Ramie Walnut
	1WG	Cherry Tweed
	1WB	Claret Suede
	1WC	Felt Grey
	1WE	Terry Walnut
	1WT	Mohair Grey
	1WU	Batiste Black



Technical Information

All product dimensions are nominal.

Vanity type: Standard

Notes

Install this product according to the installation guide.

Decorative cabinet hardware is not supplied. Refer to the KOHLER bath accessories line for recommended cabinet hardware to compliment your vanity.

To properly support the weight of the vanity and sink, secure to stud framing or 2x6 bracing behind the finished wall.

Select 250 lb (113.4 kg) load bearing 5/16" lag bolts with a length to clear obstacles in the wall and 5/16" washers.

Plan for electrical service if installing the optional electrical strip. Any electrical accessory components must be connected to a circuit protected by a Ground-Fault Circuit-Interrupter (GFCI) or Residual Current Device (RCD).