

### Features

- Premium metal construction.
- Intended for use with Rite-Temp® or HiFlow Rite-Temp® valves.
- Trim set includes showerarm and flange, single-function showerhead, faceplate with lever handle, and diverter spout with 1/2" NPT or slip-fit connection.
- 2.0 gal/min (7.6 l/min) maximum flow rate showerhead.
- Showerhead has 48 Masterclean™ spray nozzles that resist hard water buildup and a racetrack waterway ensuring great performance in low pressure environments.
- Complements with Archer faucets and accessories.

### Required Accessories

K-304/K-P304 Series Rite-Temp® Valves

or

K-2971-KS 3/4" Pressure-balancing Valve

### Optional Accessories

88526 Thin Wall Trim Kit

1073881 Deep Rough-in Kit



### Codes/Standards

ASME A112.18.1/CSA B125.1

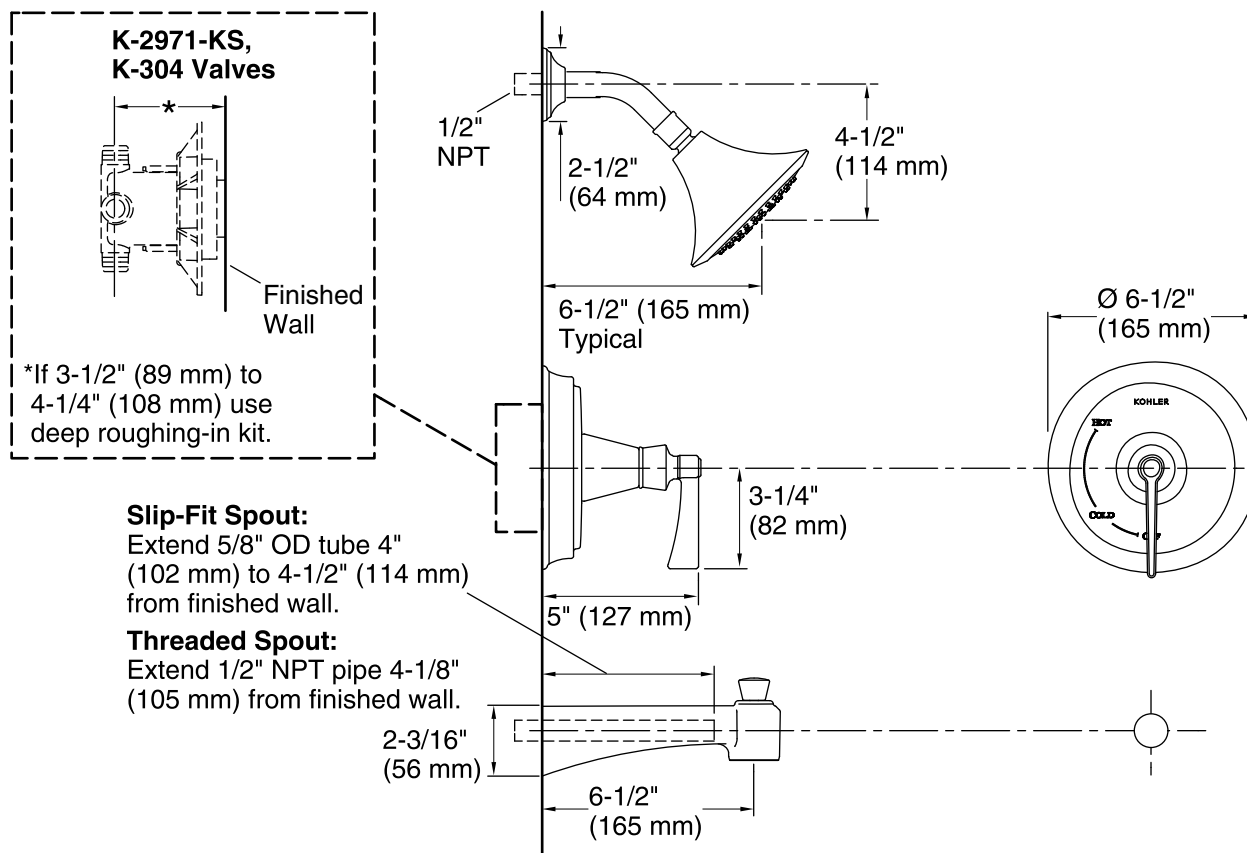
ASSE 1016

DOE - Energy Policy Act 1992

California Energy Commission (CEC)

### KOHLER® Faucet Lifetime Limited Warranty

See website for detailed warranty information.



### Technical Information

All product dimensions are nominal.

#### Spout:

Spout reach: 6-1/2" (165 mm)

#### Showerhead:

Rated maximum flow: 2 gal/min (7.6 l/min)

### Notes

Install this product according to the installation guide.

Install Rite-Temp valve according to valve installation guide.

**NOTICE:** Risk of product damage. Long screws, for installing trim, can damage the K-2971-KS valve. Consult the trim installation guide to verify if the thin wall installation kit (88526) is needed.

Avoid cross-flow conditions. Do not install shut-off device on either valve outlet.

Cap shower outlet if deck-mounted spout, diverter, or handshower is connected to the spout outlet.

Install straight pipe or tube drop of 7" (178 mm) to 18" (457 mm) with single elbow between valve and wall-mount spout.

Due to the waterway location in the spout, the finished wall should touch the top surface of the supply pipe.