

### Features

- Metal construction.
- Intended for use with Rite-Temp® or HiFlow Rite-Temp® valves.
- Lever handle.
- Includes showerhead with arm and flange, and faceplate with handle.
- 2.0 gal/min (7.6 l/min) maximum flow rate showerhead with Katalyst™ Spray Technology.

### Required Accessories

K-304/K-P304 Series Rite-Temp® Valves

or

K-2971-KS 3/4" Pressure-balancing Valve

### Optional Accessories

88526 Thin Wall Trim Kit



### Codes/Standards

ASME A112.18.1/CSA B125.1

ASSE 1016

DOE - Energy Policy Act 1992

California Energy Commission (CEC)

### KOHLER® Faucet Lifetime Limited Warranty

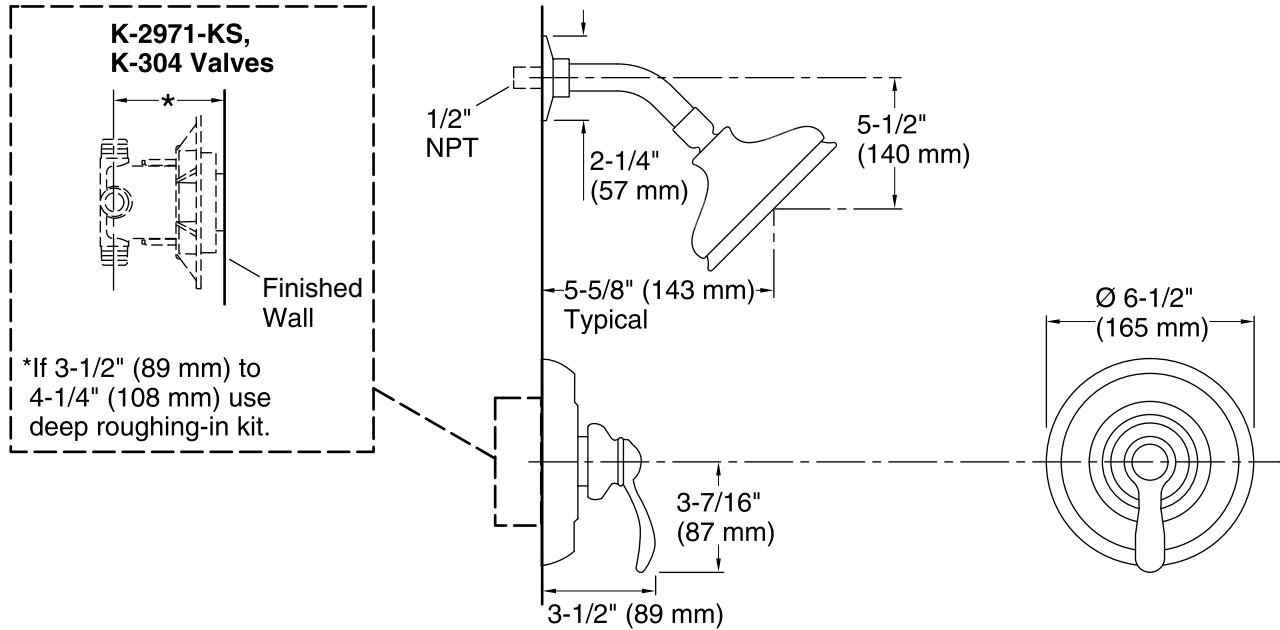
See website for detailed warranty information.

### Available Color/Finishes

*Color tiles intended for reference only.*

Color	Code	Description
-------	------	-------------

	2BZ	Oil-Rubbed Bronze
--	-----	-------------------



## Technical Information

All product dimensions are nominal.

### Showerhead:

Rated maximum flow: 2 gal/min (7.6 l/min)

## Notes

Install this product according to the installation guide.

**NOTICE:** Risk of product damage. Long screws, for installing trim, can damage the K-2971-KS valve. Consult the trim installation guide to verify if the thin wall installation kit (88526) is needed.