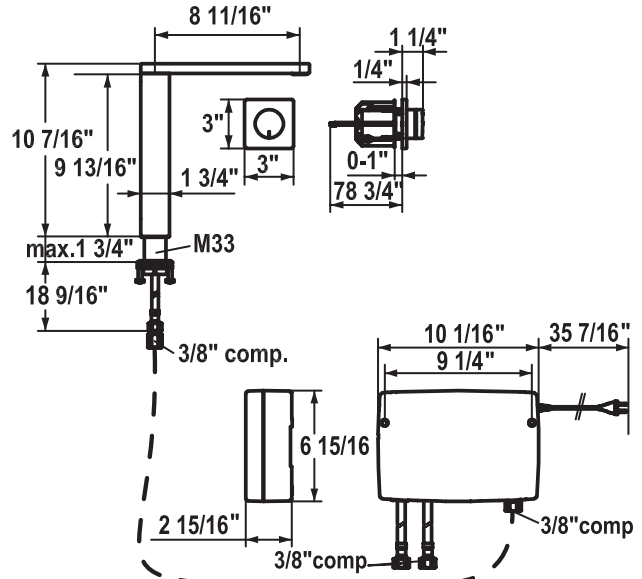


# KWC ONO Touch Light PRO



KWC-No. **10.651.032.000** Finish chrome

8 1/16" spout length  
**Z.636.183**  
concealed unit

## Kitchen Swivel Spout Faucet with Wall Control LED-Technology

### Electronic controlled

- touch light PRO technology

### Touch'n'flow 1-2-3

- touch'n'flow 1: cold water, flow rate can be individually adjusted and saved
- touch'n'flow 2: warm water, flow rate can be individually adjusted and saved
- touch'n'flow 3: hot water, flow rate can be individually adjusted and saved

### 3 preset temperatures and flow rates

- adjustable temperature
- adjustable volume all in one handle

### Microprocessor-control

- cleaning program
- adjustable temperature limit
- hot water disinfection (5 minutes) can be adjusted
- restore back to factory settings
- built in safety controls, water automatically turns off after 10 minutes

### Swivel spout 360°

- Caché® hidden aerator
- touch light PRO control unit, maintenance-free
- up-to-date microprocessor and drive technology
- tried-and-tested valve technology
- includes installation materials
- designed for wired connection to 1 operating unit (standard), wireless connection to 1 operating unit (optional)

Flexible connection hoses 3/8" compression

M33 x 1.5 threaded sleeve fastening

Mounting hole size Ø1 3/8"

### Includes:

- plug power supply 100-240 V / operating voltage 15 V / cable length 35 7/16"
- control unit and wired operating unit / cable length 78 3/4"

### Sold separately:

- rough in for operating unit Z.636.183

### To be ordered separately (optional or if necessary):

- extension set 1500 mm Z.536.352, comprising: stainless steel hose 1500 mm, 3/8" x 3/8", double nipple, sealing material
- KWC ONO touch light PRO wireless operating unit Z.536.638.000

For comprehensive information on planning, installation and operation contact your KWC dealer.

Flow rate max 1.75 gpm (60 psi)

Catalog page 28