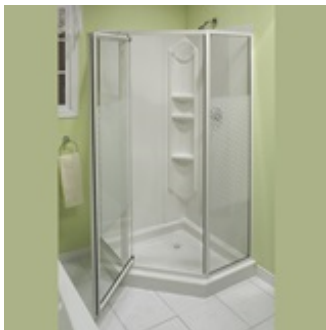


## MAAX SUBMITTAL SPECIFICATIONS

# 38" Himalaya - Chrome

**MODEL NUMBER 101694**

DIMENSIONS: 38" x 38" x 74" Polystyrene



### STANDARD FEATURES

- 3-piece polystyrene wall with 3 built-in shelves and 1 towel bar
- Textured base
- Right or left installation pivot door
- Tempered glass panels with design #47
- Drain included

### OPTIONS

- None

### UNIQUE FEATURES

- None

### SYSTEMS

- None

### DOOR SELECTION

Combine with MAAX's complete shower door offering visit [www.maax.com](http://www.maax.com)

Project : .....  
Contractor : .....  
MAAX Representative : ..... Tel : .....  
Date : .....

### CERTIFICATIONS

Maax products adhere to one or more of the following certifications:



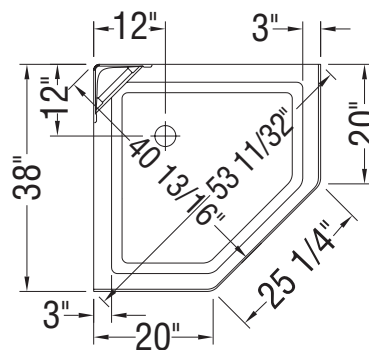
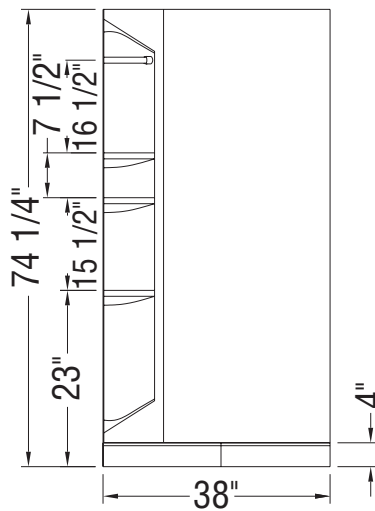
## MAAX SUBMITTAL SPECIFICATIONS

# 38" Himalaya - Chrome

MODEL NUMBER 101694

## TECHNICAL DRAWINGS

---



All dimensions are approximate. Structure measurements must be verified against the unit to ensure proper fit.

2018-01-08