

## MAAX SUBMITTAL SPECIFICATIONS

# ALLIA SH-3636 (1-piece)

**MODEL NUMBER 107007**

DIMENSIONS: 36" x 36" x 79" Acrylic



### STANDARD FEATURES

- 1 or 2-piece shower with 3 1/4 in. low threshold
- Wide 3-level corner shelves
- Standard 12 in. color-coordinated grab bar (supports up to 300 lbs)
- Optional grab bars available
- Centre drain and textured floor
- All grab bars and seats can support up to 300 lbs
- Grab bar installed on back wall, replaces standard grab bar

### OPTIONS

- Generation+ - Package A
- 18" Modern straight grab bar
- 24 in. Modern vertical straight grab bar on side wall
- All walls reinforced
- 36 in. curtain rod with installation kit
- Wall reinforcement (one wall)

### UNIQUE FEATURES

- None

### SYSTEMS

- None

### DOOR SELECTION

Combine with MAAX's complete shower door offering visit [www.maax.com](http://www.maax.com)

### CERTIFICATIONS

Maax products adhere to one or more of the following certifications:



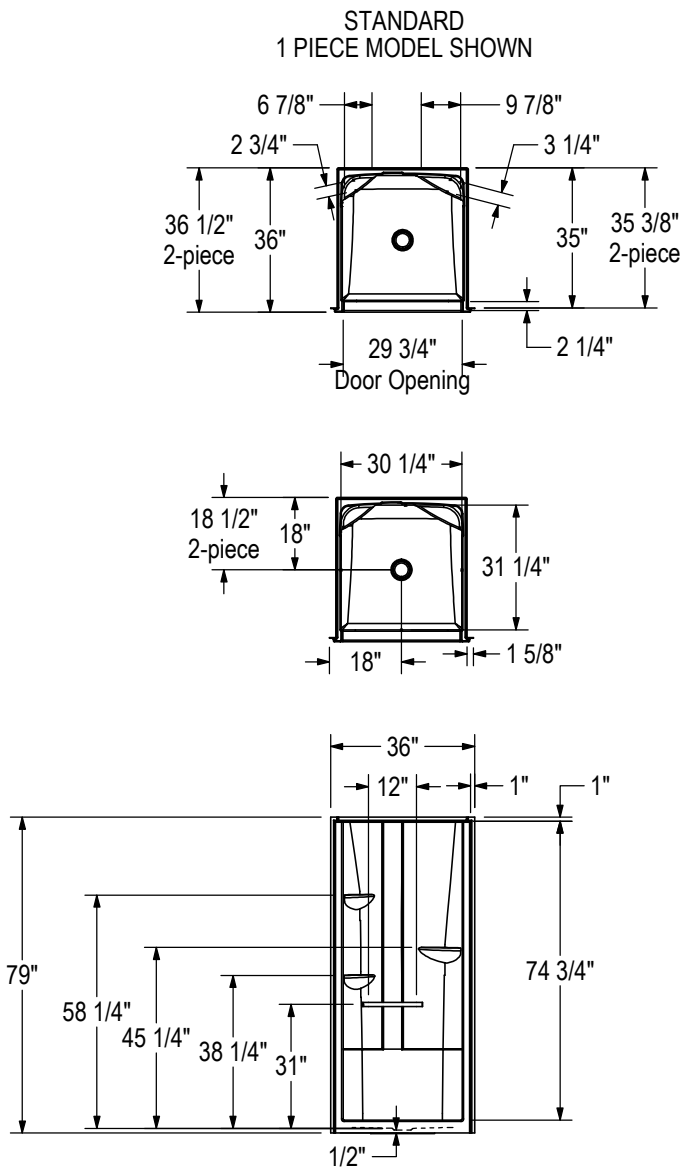
Project : .....  
Contractor : .....  
MAAX Representative : ..... Tel : .....  
Date : .....

## MAAX SUBMITTAL SPECIFICATIONS

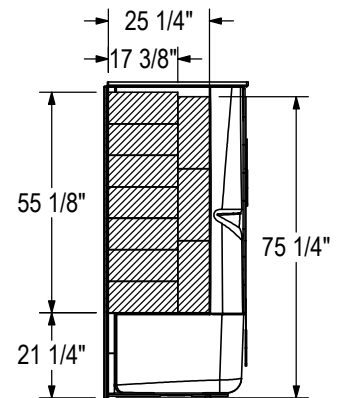
# ALLIA SH-3636 (1-piece)

MODEL NUMBER 107007

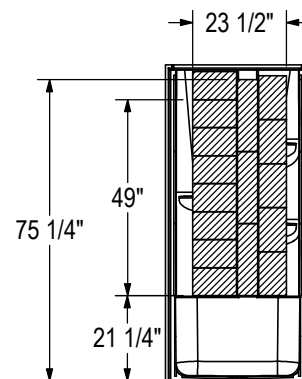
## TECHNICAL DRAWINGS



OPTIONAL REINFORCEMENT  
(Left shown, Right symmetrical)



OPTIONAL REINFORCEMENT  
(Back Wall)



All dimensions are approximate. Structure measurements must be verified against the unit to ensure proper fit.