

## MAAX SUBMITTAL SPECIFICATIONS

Vivez l'expérience

# MAAX®

Enjoy the experience

# ALLIA SH-4834 (1-piece)

**MODEL NUMBER 107005**

DIMENSIONS: 48" x 34" x 79" Acrylic



### STANDARD FEATURES

- 1 or 2-piece shower with 3 1/4 in. low threshold
- Wide 3-level corner shelves, Right, Left or no seat
- Standard 12 in. color-coordinated grab bar
- All grab bars and seats can support up to 300 lbs
- Center drain and textured floor
- Optional grab bars and fold down seat available
- Available in White only
- Grab bar installed on back wall, replaces standard brag bar

### OPTIONS

- Generation+ - Package A
- Generation+ - Package B
- Generation+ - Package C
- 18" Modern straight grab bar
- 24" Modern straight grab bar
- 23 in. Curved grab bar on back wall

### UNIQUE FEATURES

- Generation+

### SYSTEMS

- None

### DOOR SELECTION

Combine with MAAX's complete shower door offering visit [www.maax.com](http://www.maax.com)

### CERTIFICATIONS

Maax products adhere to one or more of the following certifications:



Project : .....  
Contractor : .....  
MAAX Representative : ..... Tel : .....  
Date : .....

[www.maax.com](http://www.maax.com)

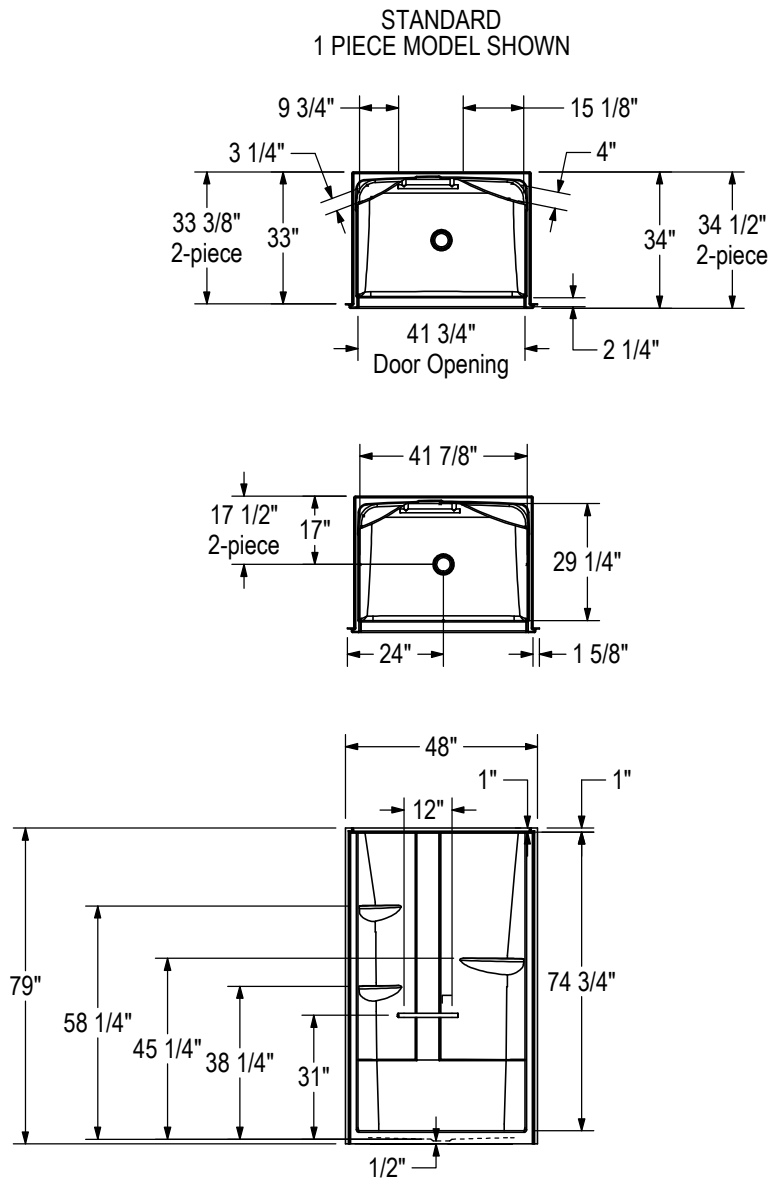
2018-01-08

## MAAX SUBMITTAL SPECIFICATIONS

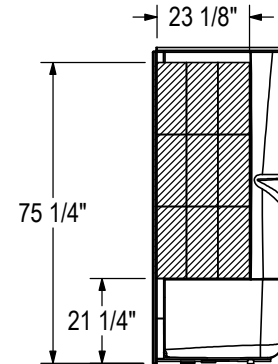
# ALLIA SH-4834 (1-piece)

MODEL NUMBER 107005

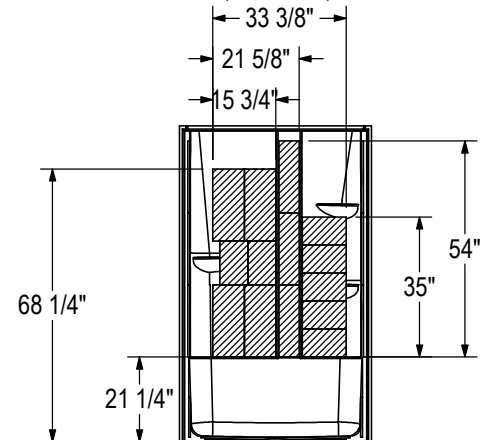
## TECHNICAL DRAWINGS



OPTIONAL REINFORCEMENT  
(Left shown, Right symmetrical)



OPTIONAL REINFORCEMENT  
(Back Wall)



All dimensions are approximate. Structure measurements must be verified against the unit to ensure proper fit.