

MAAX SUBMITTAL SPECIFICATIONS

ALLIA SH-6034 (1-piece)

MODEL NUMBER 107003

DIMENSIONS: 60" x 34" x 79" Acrylic



STANDARD FEATURES

- 1 or 2-piece shower with 3 1/4 in. low threshold
- Wide 3-level corner shelves and textured floor
- Standard 12 in. color-coordinated grab bar - supports up to 300 lbs
- Right, Left, two seats or no seat
- Right-hand, left-hand or center drain
- Optional grab bars and fold-down seat available
- All grab bars and seats can support up to 300 lbs
- Available in White only

OPTIONS

- Generation+ - Package A
- Generation+ - Package B
- Generation+ - Package C
- 18" Modern straight grab bar
- 24" Modern straight grab bar
- 30 in. Modern vertical straight grab bar

UNIQUE FEATURES

- None

SYSTEMS

- None

DOOR SELECTION

Combine with MAAX's complete shower door offering visit www.maax.com

CERTIFICATIONS

Maax products adhere to one or more of the following certifications:



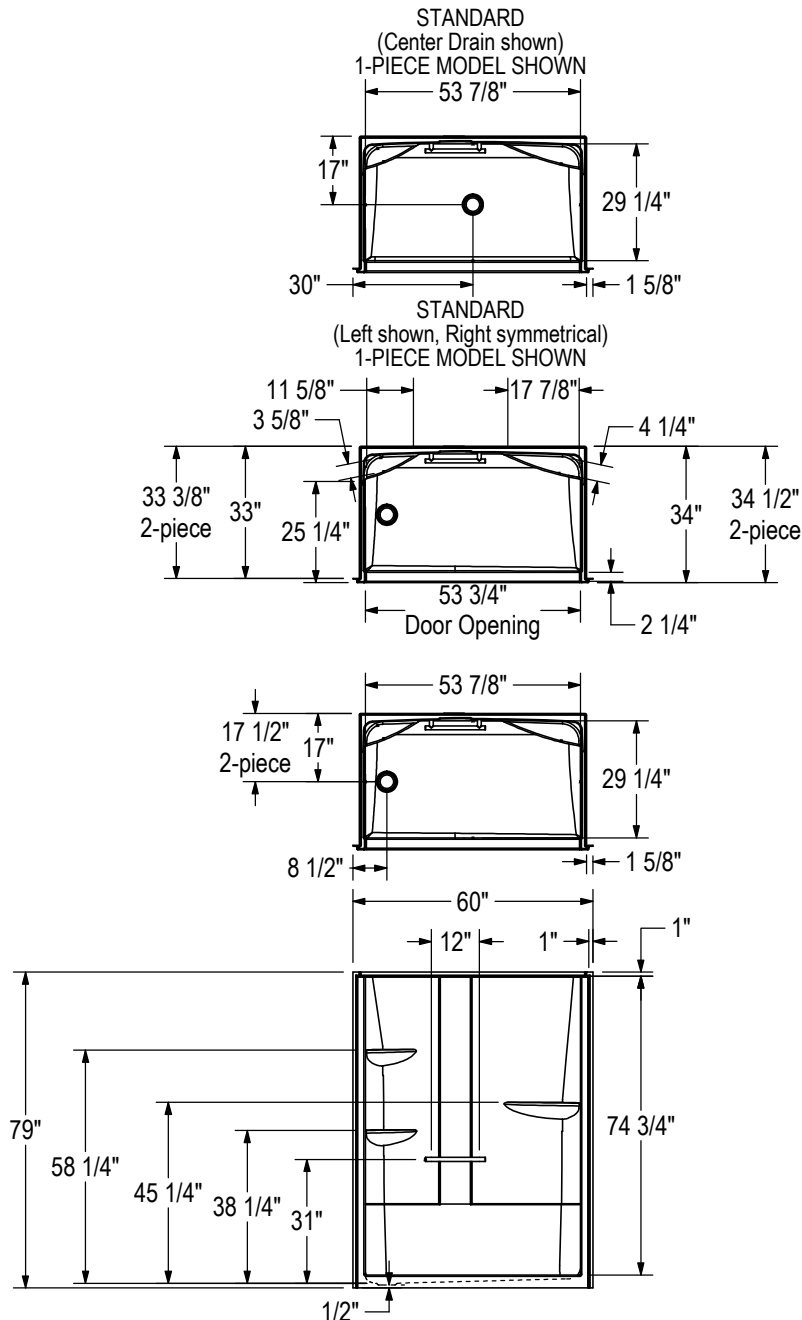
Project :
Contractor :
MAAX Representative : Tel :
Date :

MAAX SUBMITTAL SPECIFICATIONS

ALLIA SH-6034 (1-piece)

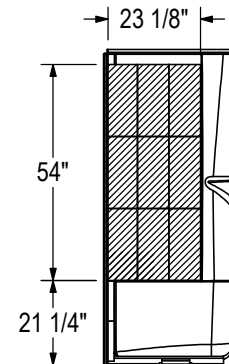
MODEL NUMBER 107003

TECHNICAL DRAWINGS



All dimensions are approximate. Structure measurements must be verified against the unit to ensure proper fit.

OPTIONAL REINFORCEMENT
 (Left shown, Right symmetrical)



OPTIONAL REINFORCEMENT
 (Back Wall)

