

MAAX SUBMITTAL SPECIFICATIONS

ALLIA SHR-3636 1-piece

MODEL NUMBER 107006

DIMENSIONS: 36" x 36" x 88" Acrylic



STANDARD FEATURES

- 1 or 3-piece shower with integrated roofcap with 3 1/4 in. threshold
- Wide 3-level corner shelves
- Standard 12 in. color-coordinated grab bar
- Centre drain and textured floor
- Optional grab bars available
- All grab bars and seats can support up to 300 lbs
- Available in White only
- Grab bar installed on back wall, replaces standard grab bar

OPTIONS

- 18" Modern straight grab bar
- 24 in. Modern vertical straight grab bar on side wall
- Generation+ - Package A
- Wall reinforcement (one wall)
- 36 in. curtain rod with installation kit
- Shelf rail guards

UNIQUE FEATURES

- None

SYSTEMS

- None

DOOR SELECTION

Combine with MAAX's complete shower door offering visit www.maax.com

CERTIFICATIONS

Maax products adhere to one or more of the following certifications:



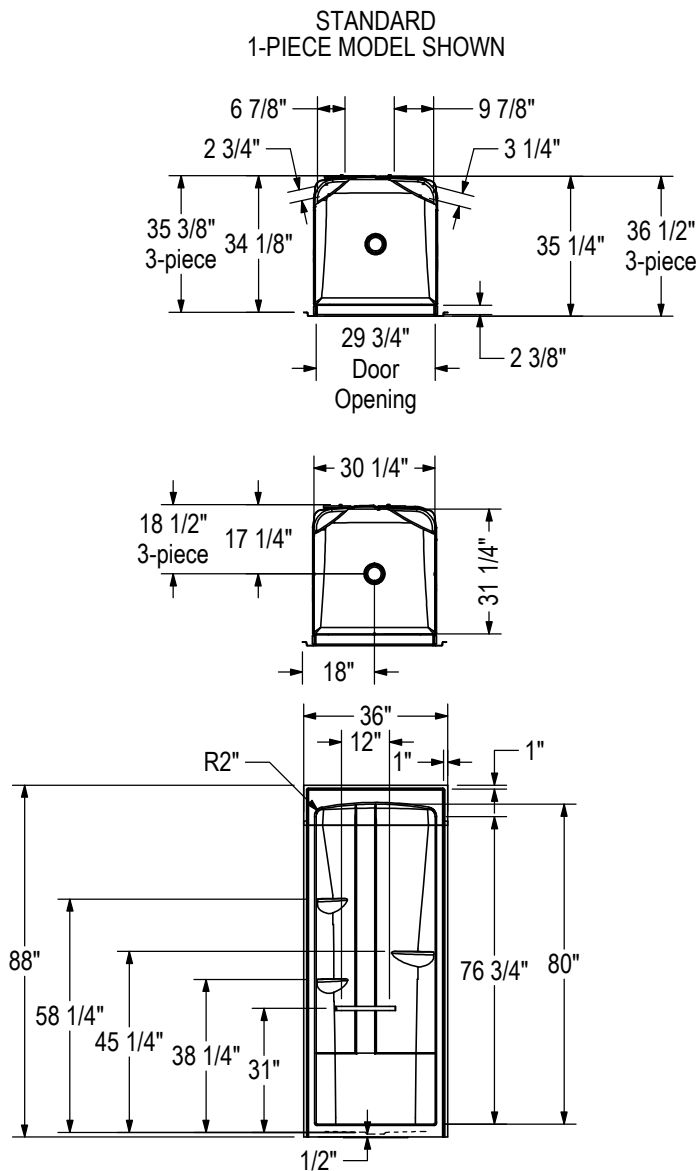
Project :
Contractor :
MAAX Representative : Tel :
Date :

MAAX SUBMITTAL SPECIFICATIONS

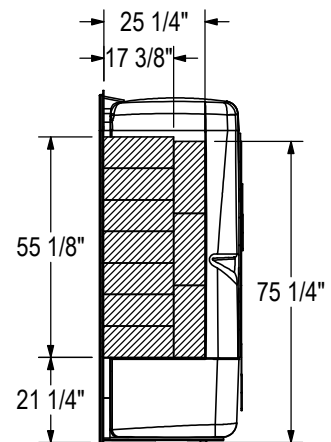
ALLIA SHR-3636 1-piece

MODEL NUMBER 107006

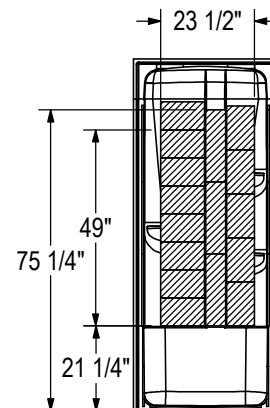
TECHNICAL DRAWINGS



OPTIONAL REINFORCEMENT
(Left shown, Right symmetrical)



OPTIONAL REINFORCEMENT
(Back Wall)



All dimensions are approximate. Structure measurements must be verified against the unit to ensure proper fit.