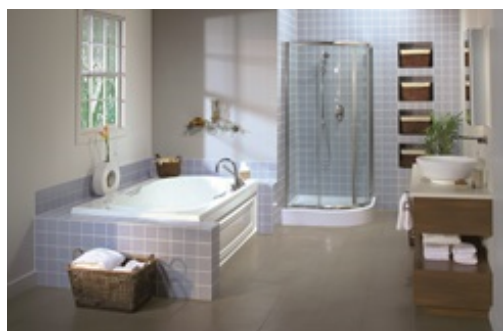


## MAAX SUBMITTAL SPECIFICATIONS

# Antigua

**MODEL NUMBER 101250**

DIMENSIONS: 72" x 42" x 22" Acrylic



Vivez l'expérience  
**MAAX**<sup>®</sup>  
Enjoy the experience

### STANDARD FEATURES

- Two raised headrests
- Solid brass handles (Chrome finish)
- Smooth bottom, centre drain
- Apron available
- 1 bathtub, 2 installations: drop in or alcove (tiling flange available)

### OPTIONS

- Acrylic apron
- One chromatherapy light
- Water heater assembly (factory installed)
- Microjet trim kit
- Hydrosens trim kit
- Metal trim kit for Air Push Control

### UNIQUE FEATURES

- None

### SYSTEMS

Microjets Hydrosens **DOOR**  
Aerosens **SELECTION**  
Combined  
Aerosens/Hydrosens  
BackmaxCombine with  
MAAX's complete  
shower door offering visit  
[www.maax.com](http://www.maax.com)

### CERTIFICATIONS

Maax products adhere to one or more of the following certifications:



Project : .....  
Contractor : .....  
MAAX Representative : ..... Tel : .....  
Date : .....

[www.maax.com](http://www.maax.com)

2018-01-08

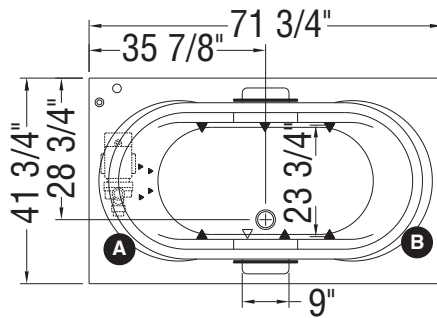
## MAAX SUBMITTAL SPECIFICATIONS

# Antigua

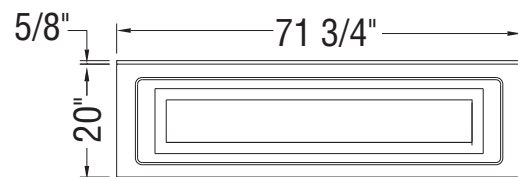
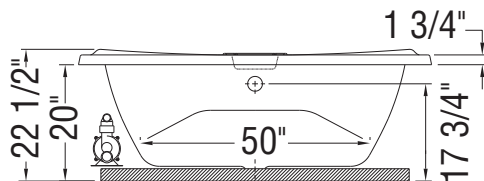
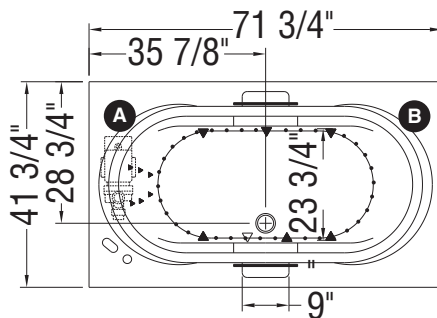
MODEL NUMBER 101250

## TECHNICAL DRAWINGS

MICRO-JETS SYSTEM



HYDROSENS, BACKMAX  
AND BUBBLE TUB SYSTEMS



- ( **A** ) : Specify blower and/or pump location when ordering
- ( **B** ) : Specify blower and/or pump location when ordering
- ( ▲ ) : Indicates whirlpool and backjets positioning
- ( △ ) : Indicates suction positioning
- ( • ) : Indicates airjets positioning

All dimensions are approximate. Structure measurements must be verified against the unit to ensure proper fit.