

MAAX SUBMITTAL SPECIFICATIONS

Astral II

MODEL NUMBER 105223

DIMENSIONS: 36" x 36" x 79" Fiberglass



Project :
Contractor :
MAAX Representative : Tel :
Date :

www.maax.com

Vivez l'expérience
MAAX®
Enjoy the experience

STANDARD FEATURES

- 1-piece round corner shower without roof cap
- Integrated shelves

OPTIONS

- ABS shower drain with Chrome stainless steel grid
- PVC quick caulking shower drain with Chrome or Brushed Nickel grid

UNIQUE FEATURES

- None

SYSTEMS

- None

DOOR SELECTION

Combine with MAAX's complete shower door offering visit www.maax.com

CERTIFICATIONS

Maax products adhere to one or more of the following certifications:



2018-01-08

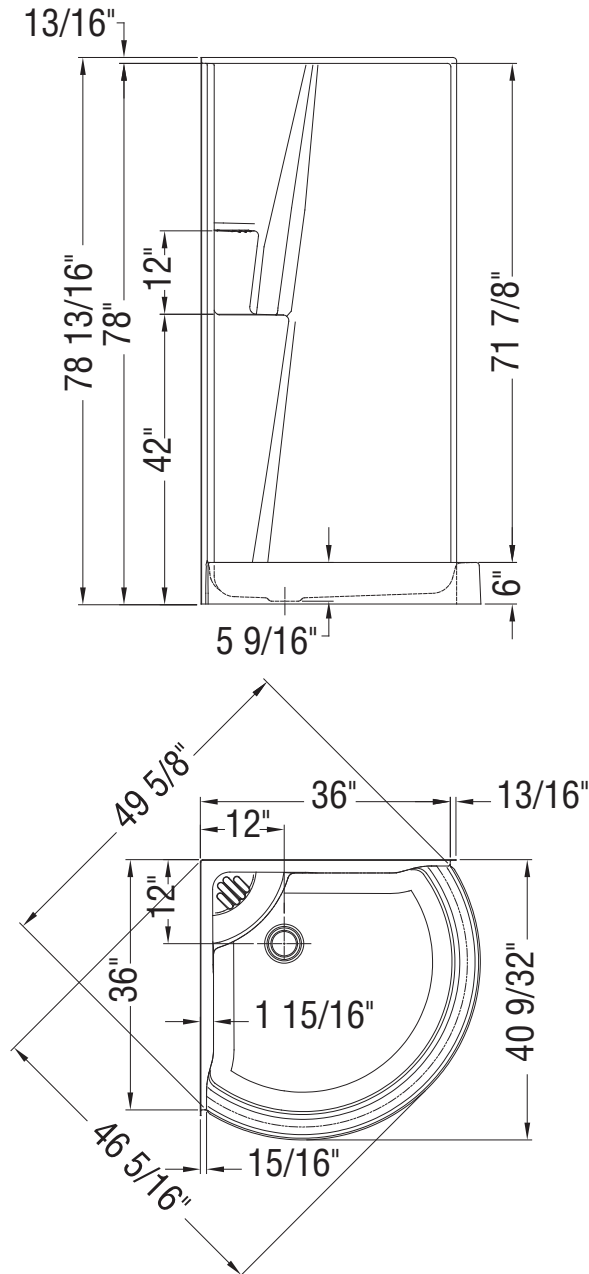
MAAX SUBMITTAL SPECIFICATIONS

Vivez l'expérience
MAAX[®]
Enjoy the experience

Astral II

MODEL NUMBER 105223

TECHNICAL DRAWINGS



All dimensions are approximate. Structure measurements must be verified against the unit to ensure proper fit.