

## MAAX SUBMITTAL SPECIFICATIONS

# Biarritz 40

**MODEL NUMBER 100959**

DIMENSIONS: 30" x 32" x 74" Fiberglass



### STANDARD FEATURES

- 1-piece shower without roof cap
- Integrated shelves

### OPTIONS

- ABS shower drain with Chrome stainless steel grid
- PVC quick caulking shower drain with Chrome or Brushed Nickel grid
- ABS shower drain with ABS grid

### UNIQUE FEATURES

- None

### SYSTEMS

- None

### DOOR SELECTION

Combine with MAAX's complete shower door offering visit [www.maax.com](http://www.maax.com)

Project : .....  
Contractor : .....  
MAAX Representative : ..... Tel : .....  
Date : .....

### CERTIFICATIONS

Maax products adhere to one or more of the following certifications:

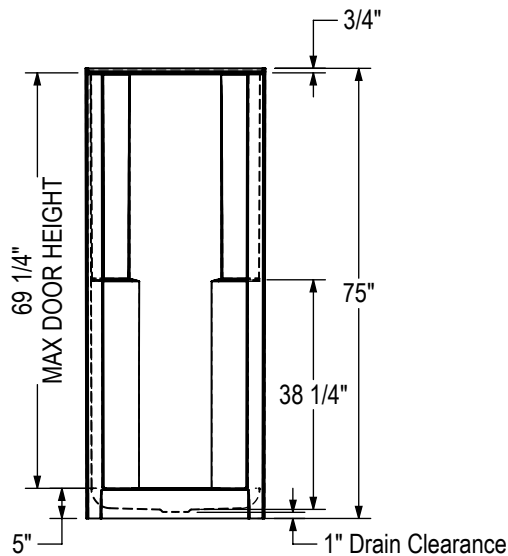
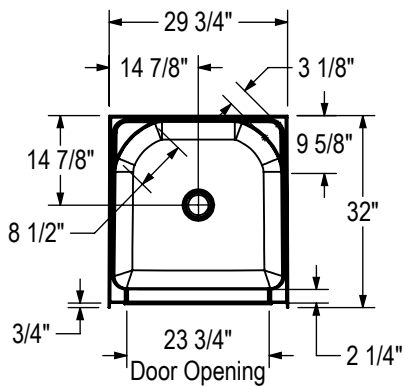


## MAAX SUBMITTAL SPECIFICATIONS

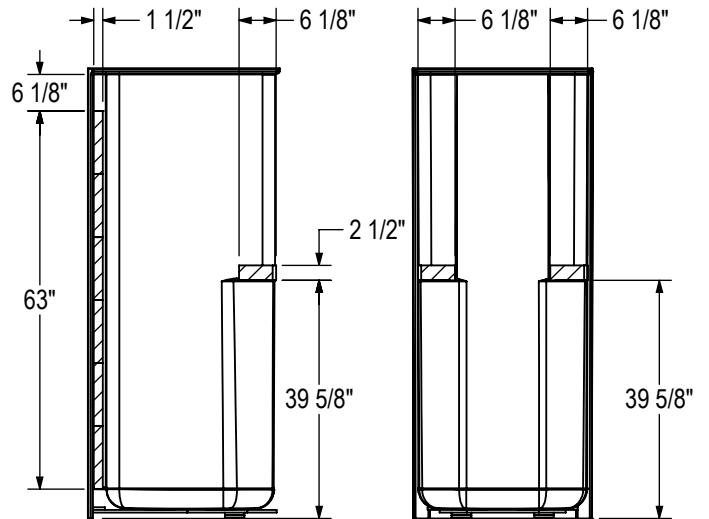
# Biarritz 40

MODEL NUMBER 100959

## TECHNICAL DRAWINGS



### REINFORCEMENT BACKING



All dimensions are approximate. Structure measurements must be verified against the unit to ensure proper fit.