

MAAX SUBMITTAL SPECIFICATIONS

Camelia SH-3636 (2-pieces)

MODEL NUMBER 105917

DIMENSIONS: 36" x 36" x 79" Acrylic



Vivez l'expérience

MAAX®

Enjoy the experience

STANDARD FEATURES

- Multi-piece shower with 3 1/4 in. low threshold
- Wide 3-level corner shelves
- Standard 12 in. color-coordinated grab bar (supports up to 300 lbs)
- Optional grab bars available
- Centre drain and Textured floor
- Available in White only

OPTIONS

- Generation+ - Package A
- 18" Modern straight grab bar
- 24 in. Modern vertical straight grab bar on side wall
- Wall reinforcement (one wall)
- All walls reinforced
- Shelf rail guards

UNIQUE FEATURES

- Generation+

SYSTEMS

- None

DOOR SELECTION

Combine with MAAX's complete shower door offering visit www.maax.com

CERTIFICATIONS

Maax products adhere to one or more of the following certifications:



Project :
Contractor :
MAAX Representative : Tel :
Date :

www.maax.com

2018-01-08

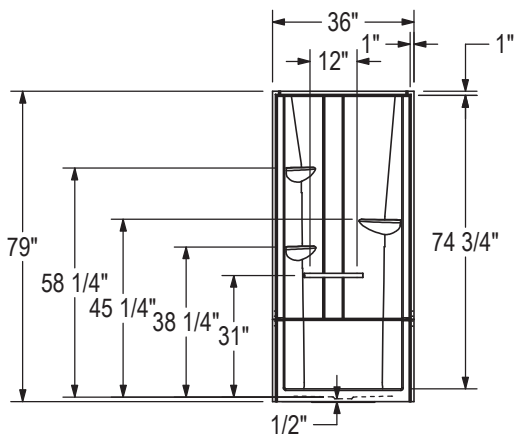
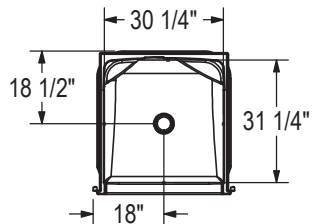
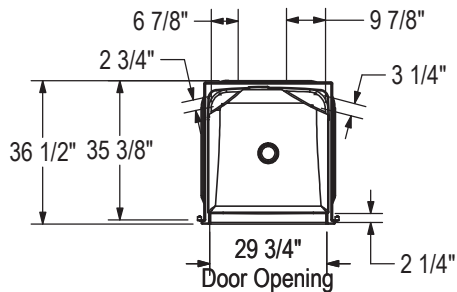
MAAX SUBMITTAL SPECIFICATIONS

Camelia SH-3636 (2-pieces)

MODEL NUMBER 105917

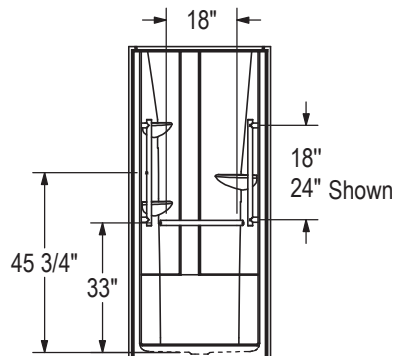
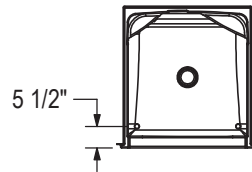
TECHNICAL DRAWINGS

STANDARD

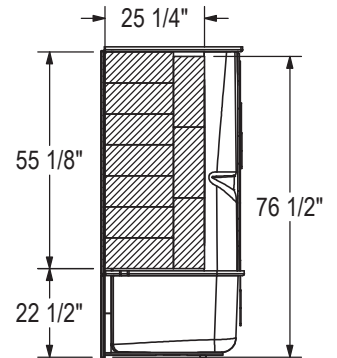


GRAB BAR

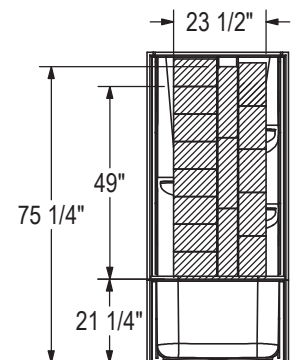
OPTION 20203 & 20204



OPTIONAL REINFORCEMENT
 (Left shown, Right symmetrical)



OPTIONAL REINFORCEMENT
 (Back Wall)



All dimensions are approximate.
 Structure measurements
 must be verified against the unit to ensure proper fit.