

## MAAX SUBMITTAL SPECIFICATIONS

# Camelia SHR-4834 (3-pieces)

MODEL NUMBER 105920

DIMENSIONS: 48" x 34" x 88" Acrylic



Project : .....  
Contractor : .....  
MAAX Representative : ..... Tel : .....  
Date : .....

[www.maax.com](http://www.maax.com)

Vivez l'expérience  
**MAAX**<sup>®</sup>  
Enjoy the experience

### STANDARD FEATURES

- Multi-piece shower with 3 1/4 in. low threshold
- Wide 3-level corner shelves
- Standard 12 in. color-coordinated grab bar (supports up to 300 lbs)
- Optional grab bars available
- Centre drain and Textured floor
- Available in White only

### OPTIONS

- Generation+ - Package A
- Generation+ - Package B
- Generation+ - Package C
- 18" Modern straight grab bar
- 24" Modern straight grab bar
- 23 in. Curved grab bar on back wall

### UNIQUE FEATURES

- Generation+

### SYSTEMS

- None

### DOOR SELECTION

Combine with MAAX's complete shower door offering visit [www.maax.com](http://www.maax.com)

### CERTIFICATIONS

Maax products adhere to one or more of the following certifications:



2018-01-08

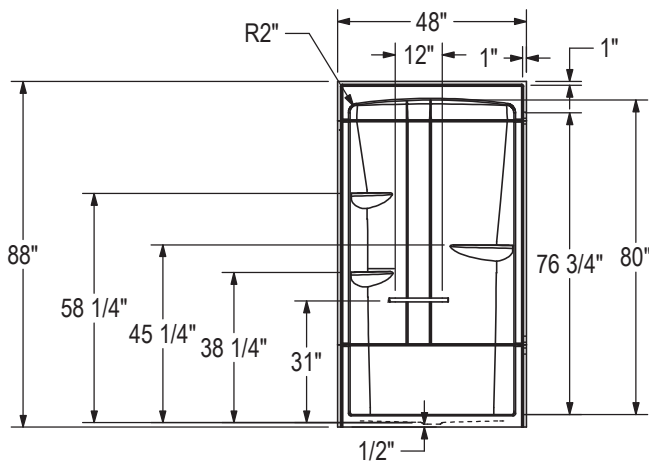
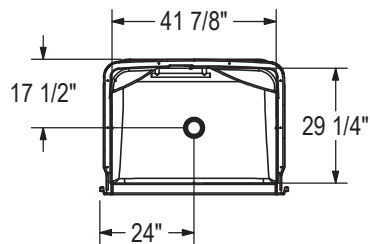
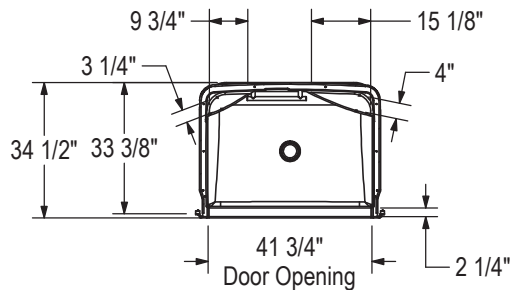
## MAAX SUBMITTAL SPECIFICATIONS

# Camelia SHR-4834 (3-pieces)

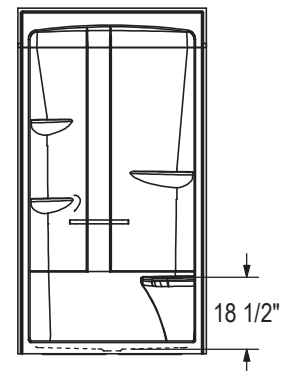
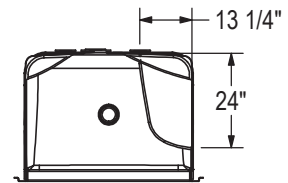
MODEL NUMBER 105920

## TECHNICAL DRAWINGS

STANDARD



SEAT  
(Left shown, Right symmetrical)



All dimensions are approximate. Structure measurements must be verified against the unit to ensure proper fit.