

MAAX SUBMITTAL SPECIFICATIONS

Camelia TSR-6032 (3-pieces)

MODEL NUMBER 105916

DIMENSIONS: 60" x 32" x 88" Acrylic



Vivez l'expérience

MAAX®

Enjoy the experience

STANDARD FEATURES

- Multi-piece tub shower with integrated roofcap
- Wide 3-level corner shelves
- Standard 12" colour-coordinated grab bar
- Comes with an access panel when equipped with a system
- Optional grab bars and removable seat available
- Unique feature: 3 in. Above-the-Floor Rough
- Right or left-hand drain
- All grab bars and seats can support up to 300 lbs
- Available in White only

OPTIONS

- Generation+ - Package A
- Generation+ - Package B
- Generation+ - Package C
- 18" Modern straight grab bar
- 24" Modern straight grab bar
- 30 in. Modern vertical straight grab bar

UNIQUE FEATURES

- Above-the-Floor Rough (AFR)
- Generation+

SYSTEMS

- None

DOOR SELECTION

Combine with MAAX's complete shower door offering visit

www.maax.com

CERTIFICATIONS

Maax products adhere to one or more of the following certifications:



Project :
Contractor :
MAAX Representative : Tel :
Date :

www.maax.com

2018-01-08

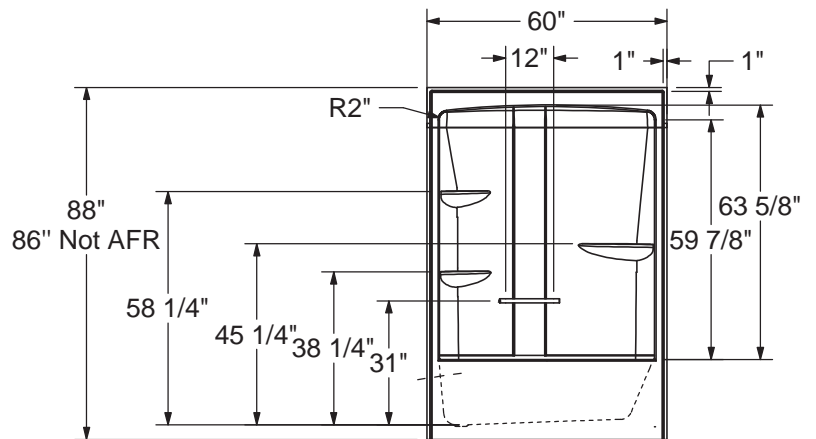
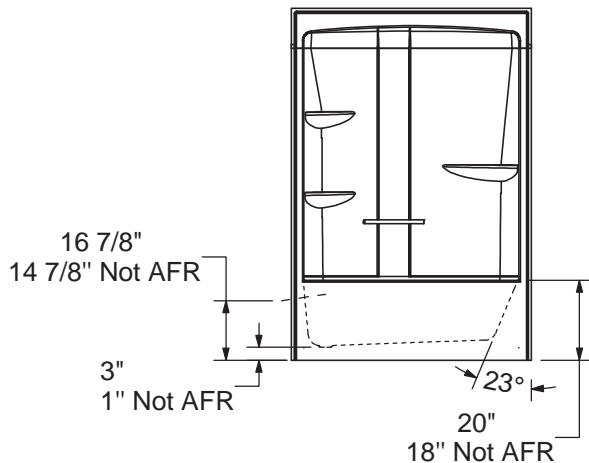
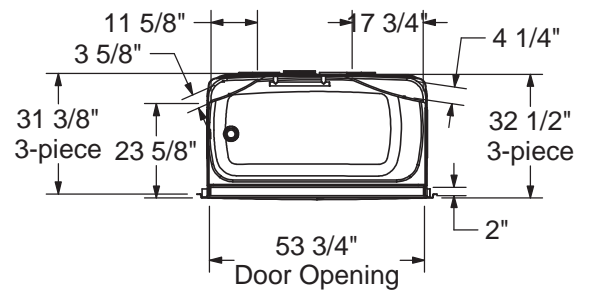
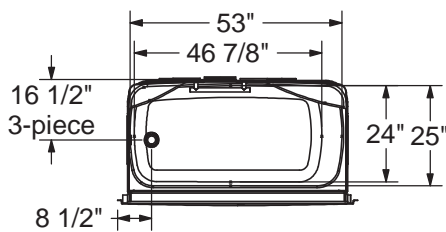
MAAX SUBMITTAL SPECIFICATIONS

Camelia TSR-6032 (3-pieces)

MODEL NUMBER 105916

TECHNICAL DRAWINGS

STANDARD
 (Left shown, Right symmetrical)



All dimensions are approximate. Structure measurements must be verified against the unit to ensure proper fit.