

MAAX SUBMITTAL SPECIFICATIONS

Essence base 3448

MODEL NUMBER 148032

DIMENSIONS: 48" x 34" x 20" Fiberglass



Project :
Contractor :
MAAX Representative : Tel :
Date :

www.maax.com

Vivez l'expérience
MAAX®
Enjoy the experience

STANDARD FEATURES

- Rectangular shower base
- Integrated tiling flange
- Right or left integrated seat
- Textured floor
- Center drain

OPTIONS

- Tile Adaptor (for door installation)

UNIQUE FEATURES

- Tiling Flange

SYSTEMS

- None

DOOR SELECTION

Combine with MAAX's complete shower door offering visit www.maax.com

CERTIFICATIONS

Maax products adhere to one or more of the following certifications:



2018-01-08

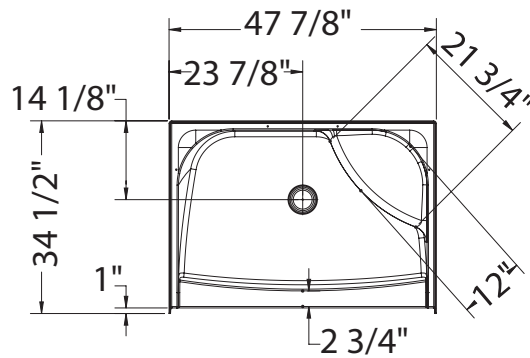
MAAX SUBMITTAL SPECIFICATIONS

Essence base 3448

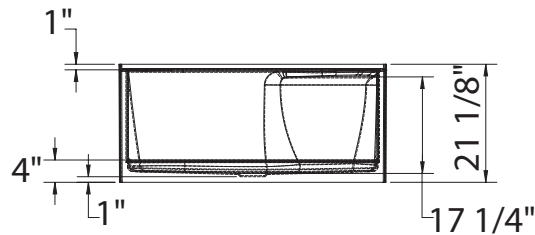
MODEL NUMBER 148032

TECHNICAL DRAWINGS

RIGHT SEAT SHOWN
LEFT SEAT SYMMETRICAL



NOT ABOVE-THE-FLOOR



ABOVE-THE-FLOOR

