

MAAX SUBMITTAL SPECIFICATIONS

Exhibit 6032 IF DTF

MODEL NUMBER 105550

DIMENSIONS: 60" x 32" x 20" Acrylic



Project :
Contractor :
MAAX Representative : Tel :
Date :

www.maax.com

Vivez l'expérience
MAAX[®]
Enjoy the experience

STANDARD FEATURES

- Unique feature: minimalist look with discreet armrests
- Textured bottom
- Alcove installation
- Apron with magnetic access panel available
- Integrated double tiling flange
- Access panel available on IFS models only

OPTIONS


- One chromatherapy light
- Water heater assembly (factory installed)
- Metal trim kit for whirlpool and combined systems
- Metal trim kit for Air Push Control
- Cable-operated waste and overflow
- Foam pillow with 2 suction pads


UNIQUE FEATURES

- Tiling Flange

SYSTEMS

 MAAX Professional Whirlpool

 Aeroeffect **DOOR**

 Combined Whirlpool/Aeroeffect

 Chromatherapy **SELECTION**

Combine with MAAX's complete shower door offering visit www.maax.com

CERTIFICATIONS

Maax products adhere to one or more of the following certifications:



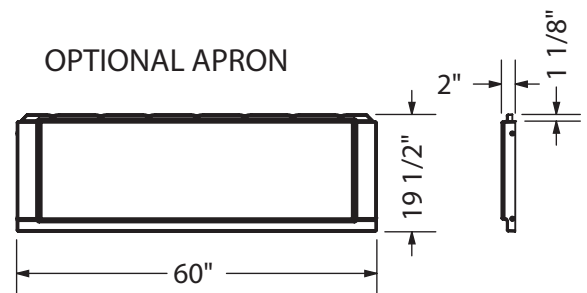
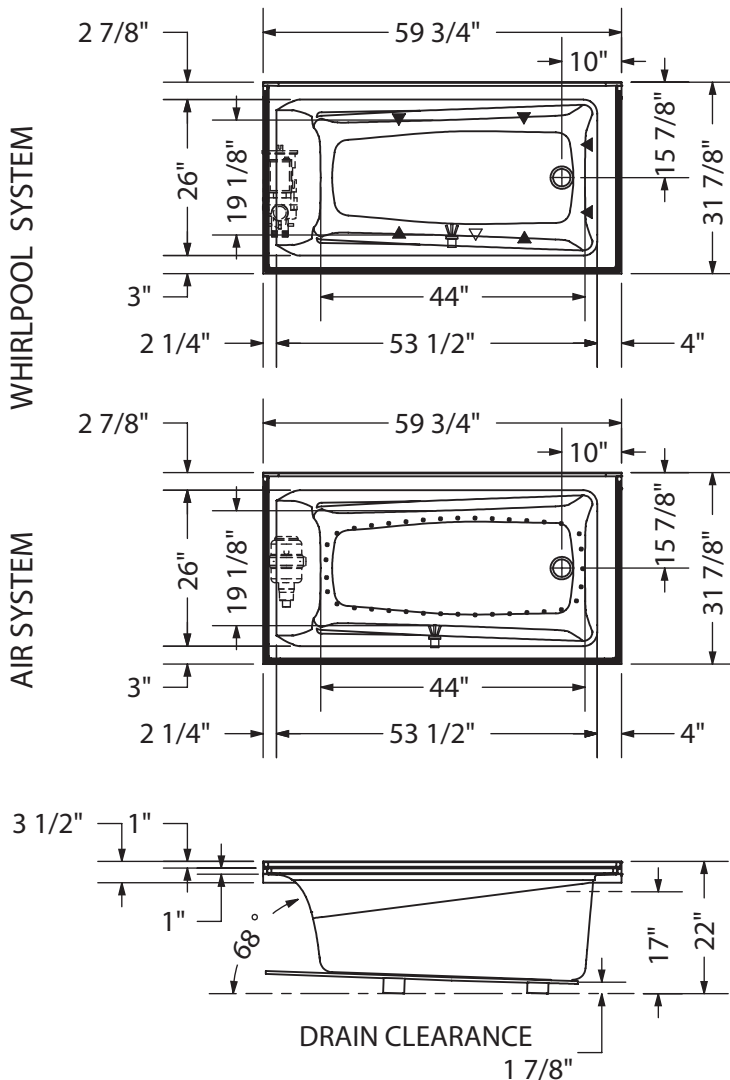
2018-01-08

MAAX SUBMITTAL SPECIFICATIONS

Exhibit 6032 IF DTF

MODEL NUMBER 105550

TECHNICAL DRAWINGS



- (▲) : Indicates whirlpool jets positioning
- (△) : Indicates suction positioning
- (●) : Indicates airjets positioning
- (☼) : Indicates chromatherapy light positioning

All dimensions are approximate. Structure measurements must be verified against the unit to ensure proper fit.