

# MAAX SUBMITTAL SPECIFICATIONS

## Exhibit 6032 IF

**MODEL NUMBER 105514**

DIMENSIONS: 60" x 32" x 20" Acrylic



Project : .....  
Contractor : .....  
MAAX Representative : ..... Tel : .....  
Date : .....

**www.maax.com**

Vivez l'expérience  
**MAAX**<sup>®</sup>  
Enjoy the experience

### STANDARD FEATURES

- Rectangular shape bathtub
- Drop-in or alcove installation with tiling flange
- Minimalist look with discreet armrests and textured floor
- End drain




### OPTIONS

- One chromatherapy light
- Water heater assembly (factory installed)
- Metal trim kit for whirlpool and combined systems
- Metal trim kit for Air Push Control
- Cable-operated waste and overflow
- Foam pillow with 2 suction pads

### UNIQUE FEATURES

- Tiling Flange

### SYSTEMS

-  MAAX Professional Whirlpool
-  Aeroeffect **DOOR**
-  Combined Whirlpool/Aeroeffect

### SELECTION

Combine with MAAX's complete shower door offering visit [www.maax.com](http://www.maax.com)

### CERTIFICATIONS

Maax products adhere to one or more of the following certifications:



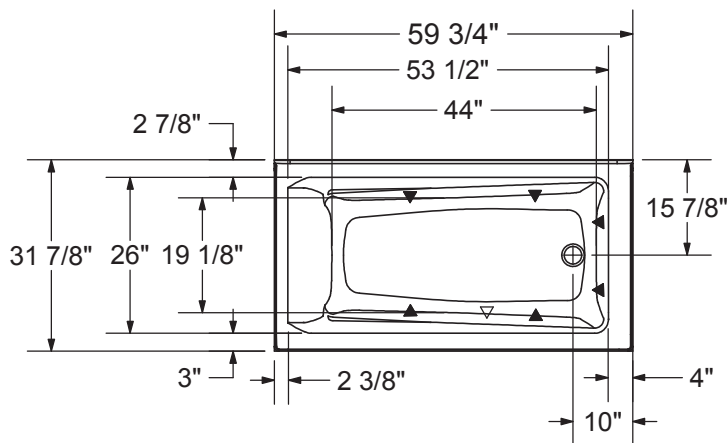
2018-01-08

## MAAX SUBMITTAL SPECIFICATIONS

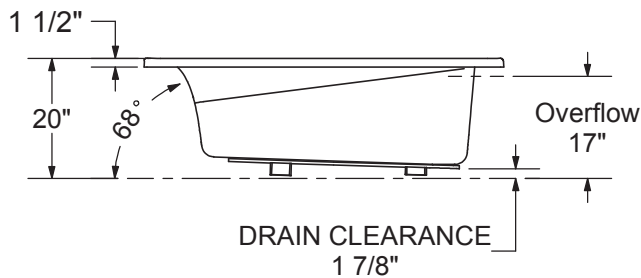
# Exhibit 6032 IF

MODEL NUMBER 105514

## TECHNICAL DRAWINGS



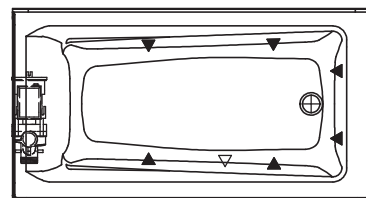
1" Single Integrated tiling  
 flange (shown)  
 2" Double Integrated tiling  
 flange (not shown)  
 Drop-in model (Shown)



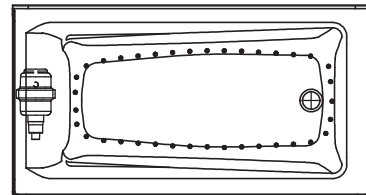
Wood support design may vary.  
 Single Integrated tiling flange: 1" height x 1/4" thickness (shown)  
 Double Integrated tiling flange: 2" height (not shown)

All dimensions are approximate.  
 Structure measurement must be verified against the unit to ensure proper fit.

WHIRLPOOL SYSTEM



AIR SYSTEM



- ( ▲ ) : Indicates whirlpool jets positioning
- ( △ ) : Indicates suction positioning
- ( ● ) : Indicates airjets positioning