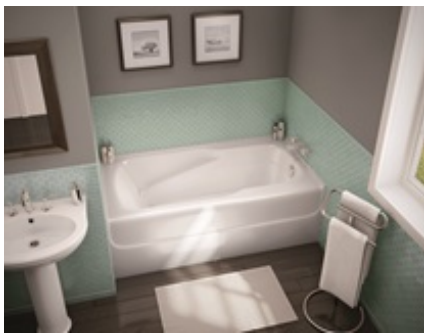


## MAAX SUBMITTAL SPECIFICATIONS

# FT6030 5 FT

**MODEL NUMBER 140027**

DIMENSIONS: 60" x 30" x 19" Fiberglass



### STANDARD FEATURES

- Armrests
- Textured bottom
- Deck for faucet installation
- Integrated apron and double tiling flange

### OPTIONS

- Water heater assembly (factory installed)
- Metal trim kit for whirlpool and combined systems
- One chromatherapy light

### UNIQUE FEATURES

- None

### SYSTEMS

 MAAX Professional Whirlpool

### DOOR SELECTION

Combine with MAAX's complete shower door offering visit [www.maax.com](http://www.maax.com)

Project : .....  
Contractor : .....  
MAAX Representative : ..... Tel : .....  
Date : .....

### CERTIFICATIONS

Maax products adhere to one or more of the following certifications:



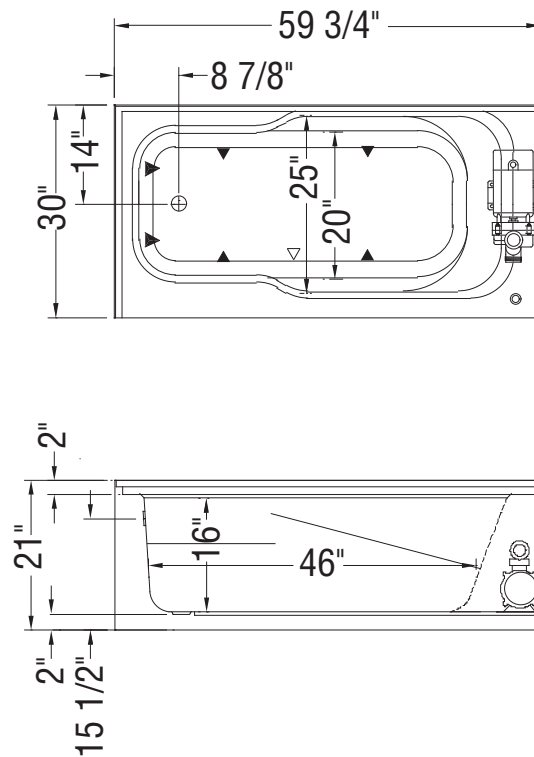
## MAAX SUBMITTAL SPECIFICATIONS

# FT6030 5 FT

MODEL NUMBER 140027

## TECHNICAL DRAWINGS

---



( ▲ ) : Indicates Whirlpool jets positioning

( △ ) : Indicates suction positioning

**All dimensions are approximate. Structure measurements must be verified against the unit to ensure proper fit.**