

MAAX SUBMITTAL SPECIFICATIONS

Galaxie II

MODEL NUMBER 105222

DIMENSIONS: 37" x 37" x 79" Fiberglass



STANDARD FEATURES

- 1-piece neo-round corner shower
- Integrated shelves and soap dish
- Center drain

OPTIONS

- ABS shower drain with Chrome stainless steel grid
- PVC quick caulking shower drain with Chrome or Brushed Nickel grid

UNIQUE FEATURES

- None

SYSTEMS

- None

DOOR SELECTION

Combine with MAAX's complete shower door offering visit www.maax.com

Project :
Contractor :
MAAX Representative : Tel :
Date :

CERTIFICATIONS

Maax products adhere to one or more of the following certifications:



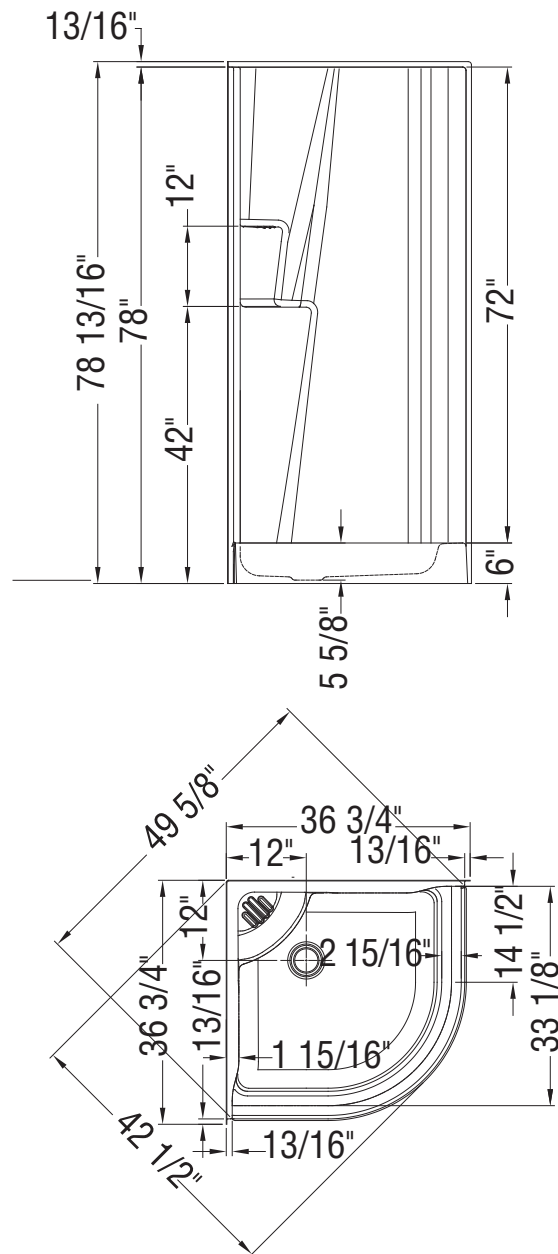
MAAX SUBMITTAL SPECIFICATIONS

Vivez l'expérience
MAAX[®]
Enjoy the experience

Galaxie II

MODEL NUMBER 105222

TECHNICAL DRAWINGS



All dimensions are approximate. Structure measurements must be verified against the unit to ensure proper fit.