

MAAX SUBMITTAL SPECIFICATIONS

GALLERY SH-3232

MODEL NUMBER 105600

DIMENSIONS: 32" x 32" x 75" Fiberglass



STANDARD FEATURES

- 2-piece unit with center drain and textured bottom
- Unique MAAX *PIN system* for easy front installation
- Low 3" threshold base allowing an easy and safe access
- Large two level corner shelves
- Knock-down packaging offers optimal protection and easier manipulation

OPTIONS

- 18" Modern straight grab bar
- 24 in. Modern vertical straight grab bar on side wall
- All walls reinforced
- PVC quick caulking shower drain with Chrome or Brushed Nickel grid
- ABS shower drain with Chrome stainless steel grid
- ABS shower drain with ABS grid

UNIQUE FEATURES

- PIN system

SYSTEMS

- None

DOOR SELECTION

Combine with MAAX's complete shower door offering visit www.maax.com

CERTIFICATIONS

Maax products adhere to one or more of the following certifications:



Project :
Contractor :
MAAX Representative : Tel :
Date :

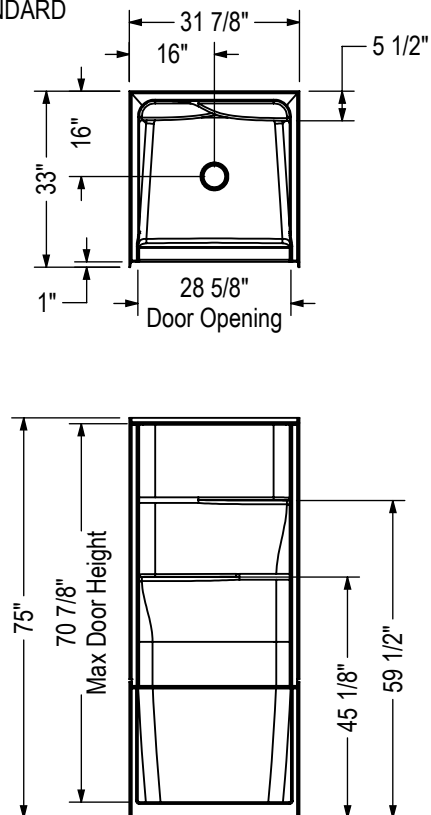
MAAX SUBMITTAL SPECIFICATIONS

GALLERY SH-3232

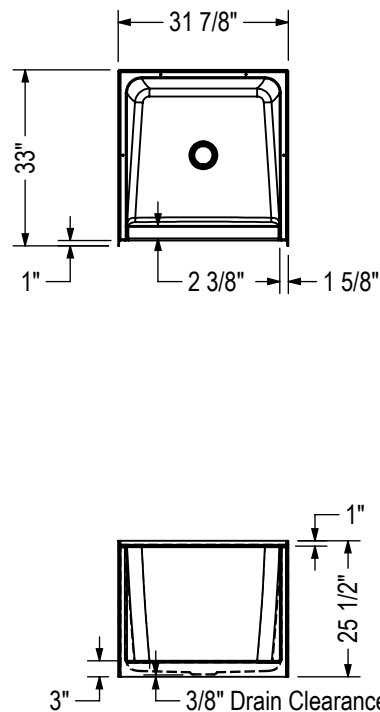
MODEL NUMBER 105600

TECHNICAL DRAWINGS

STANDARD

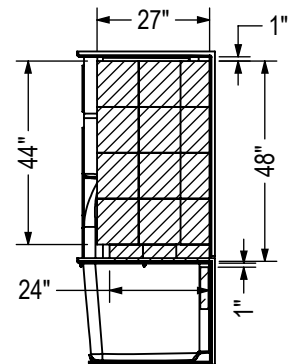


BASE ONLY

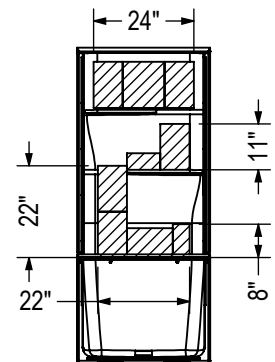


REINFORCEMENT BACKING

OPT 10189 (Left shown, Right symmetrical)

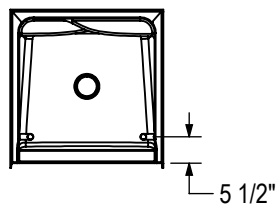


OPT 10189 (Back shown)

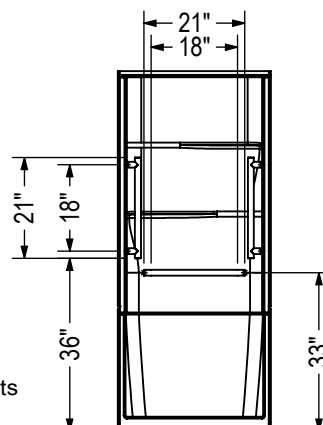


GRAB BAR

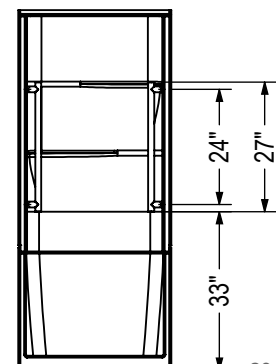
OPTION
20203-20204



OPTION 20203



OPTION 20204



All dimensions are approximate. Structure measurements must be verified against the unit to ensure proper fit.