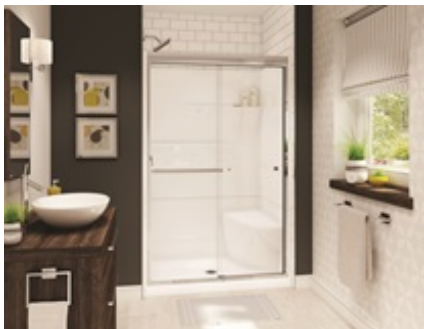


## MAAX SUBMITTAL SPECIFICATIONS

# GALLERY SH-4834

**MODEL NUMBER 105596**

DIMENSIONS: 48" x 34" x 75" Fiberglass



### STANDARD FEATURES

- 2-piece unit with center drain and textured bottom
- Unique MAAX **PIN system** for easy front installation
- Low 3" threshold base allowing an easy and safe access
- Large right or left built-in seat for added comfort
- Large two level corner shelves
- Knock-down packaging offers optimal protection and easier manipulation

### OPTIONS

- 18" Modern straight grab bar
- 24" Modern straight grab bar
- All walls reinforced
- PVC quick caulking shower drain with Chrome or Brushed Nickel grid
- ABS shower drain with Chrome stainless steel grid
- ABS shower drain with ABS grid

### UNIQUE FEATURES

- PIN system

### SYSTEMS

- None

### DOOR SELECTION

Combine with MAAX's complete shower door offering visit [www.maax.com](http://www.maax.com)

### CERTIFICATIONS

Maax products adhere to one or more of the following certifications:



Project : .....  
 Contractor : .....  
 MAAX Representative : ..... Tel : .....  
 Date : .....

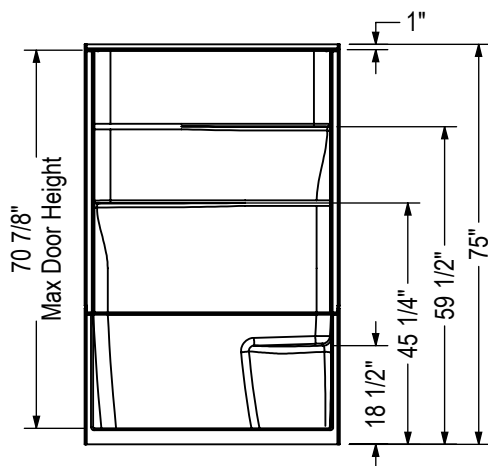
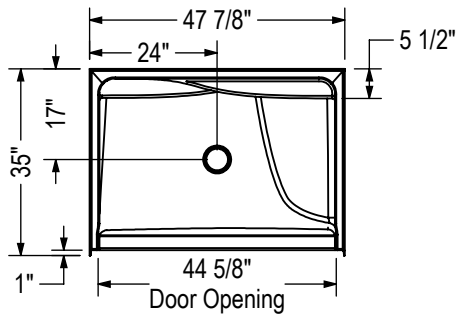
## MAAX SUBMITTAL SPECIFICATIONS

# GALLERY SH-4834

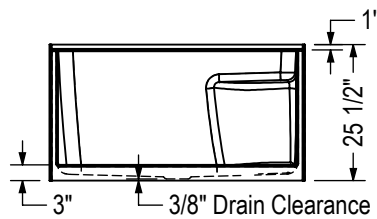
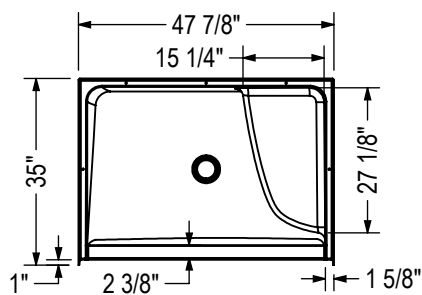
MODEL NUMBER 105596

## TECHNICAL DRAWINGS

### STANDARD

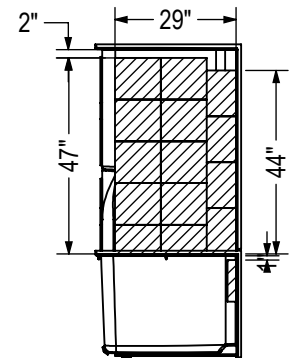


### BASE ONLY

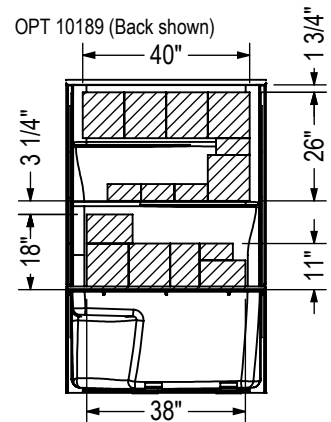


### REINFORCEMENT BACKING

OPT 10189 (Left shown, Right symmetrical)

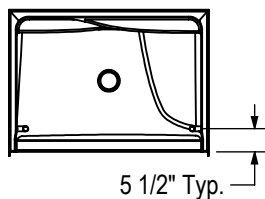


OPT 10189 (Back shown)

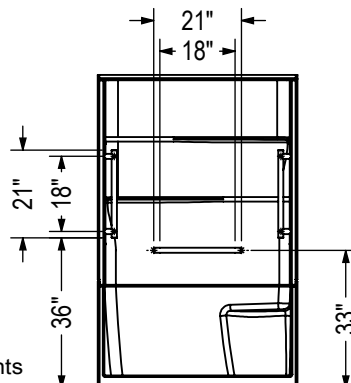


### GRAB BAR

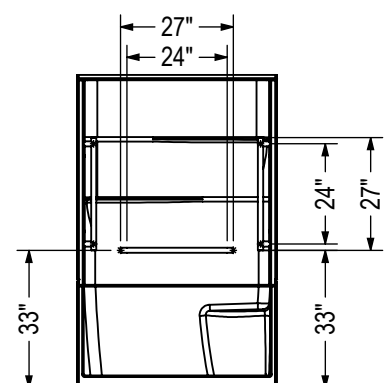
OPTION  
20203-20204



### OPTION 20203



### OPTION 20204



All dimensions are approximate. Structure measurements must be verified against the unit to ensure proper fit.