

MAAX SUBMITTAL SPECIFICATIONS

GALLERY TS-6030-2P

MODEL NUMBER 105573

DIMENSIONS: 60" x 30" x 75" Fiberglass



STANDARD FEATURES

- 2-piece unit with right-hand or left-hand drain available
- Increased bathing well and inclined backrest
- Unique MAAX **PIN system** for easy front installation
- Large two level corner shelves
- Knock-down packaging offers optimal protection and easier manipulation

OPTIONS

- 18" Modern straight grab bar
- 24" Modern straight grab bar
- All walls reinforced
- Cable-operated waste and overflow
- Waste and overflow
- Foam pillow with 2 suction pads

UNIQUE FEATURES

- PIN system
- Tiling Flange

SYSTEMS

- None

DOOR SELECTION

Combine with MAAX's complete shower door offering visit www.maax.com

CERTIFICATIONS

Maax products adhere to one or more of the following certifications:



Project :
Contractor :
MAAX Representative : Tel :
Date :

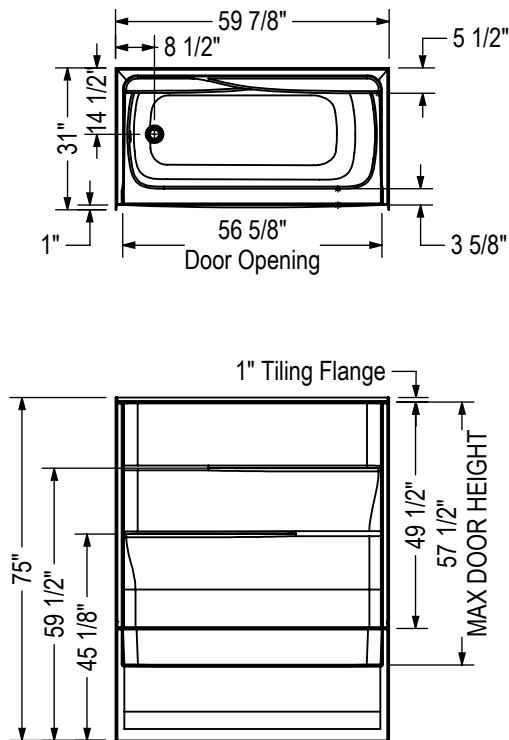
MAAX SUBMITTAL SPECIFICATIONS

GALLERY TS-6030-2P

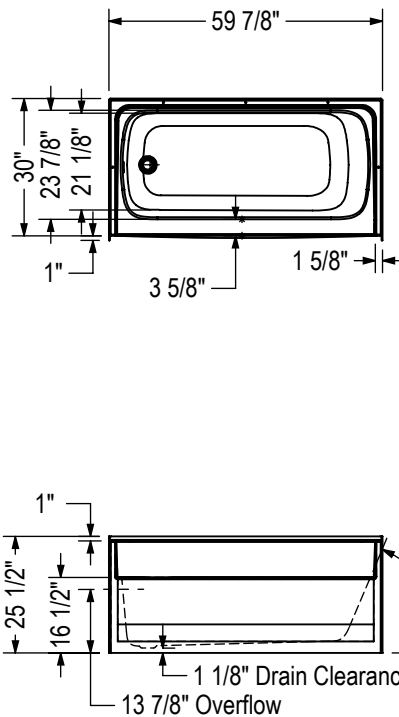
MODEL NUMBER 105573

TECHNICAL DRAWINGS

STANDARD

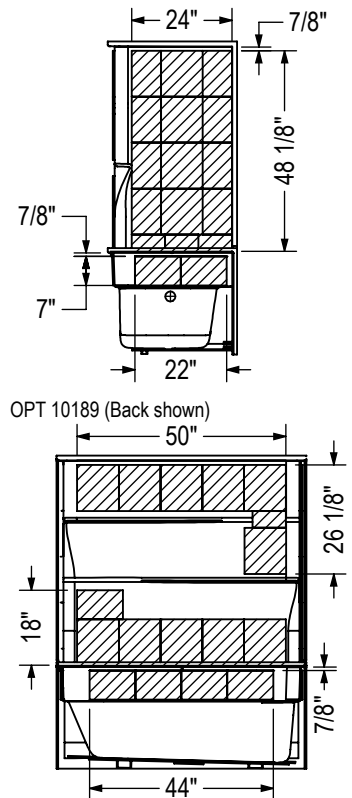


BASE ONLY



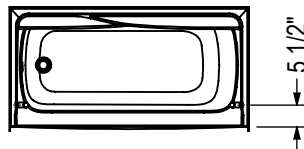
REINFORCEMENT BACKING

OPT 10189 (Left shown, Right symmetrical)

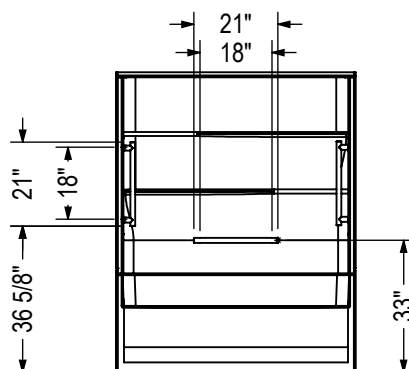


GRAB BAR

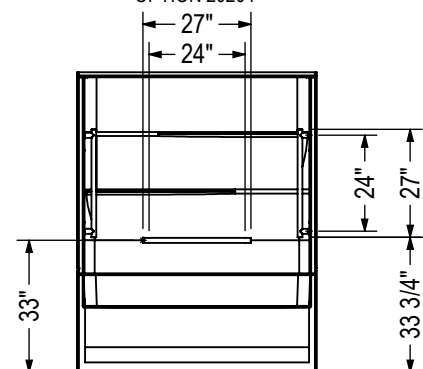
OPTION
20203-20204



OPTION 20203



OPTION 20204



All dimensions are approximate. Structure measurements must be verified against the unit to ensure proper fit.