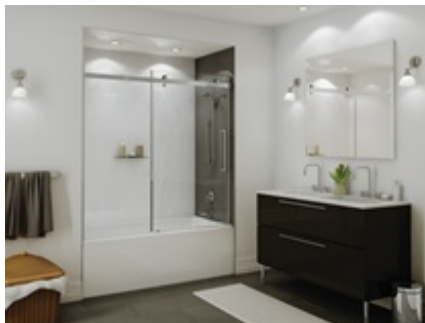


## MAAX SUBMITTAL SPECIFICATIONS

# Discontinued – Halo sliding tub shield 56 1/2-59 x 59 in. 8 mm

**MODEL NUMBER 138402**

DIMENSIONS: 56 1/2 - 59" x 59" Glass



Project : .....  
Contractor : .....  
MAAX Representative : ..... Tel : .....  
Date : .....

**www.maax.com**

Vivez l'expérience  
**MAAX®**  
Enjoy the experience

### STANDARD FEATURES

- Silent big roller mechanism with integrated ball bearing technology
- Frameless, clear 5/16 in. (8 mm) tempered glass
- Offers an easy access to plumbing, versatile left right opening
- Sliding glass door for tub and tub shower, 56 1/2 in. of wall clearance
- Available in 3 finishes: Chrome, Brushed Nickel and Dark Bronze

### OPTIONS

- None

### UNIQUE FEATURES

- Ball Bearing Roller
- Roller adjustment system

### SYSTEMS

- None

### CERTIFICATIONS

Maax products adhere to one or more of the following certifications:



2018-01-08

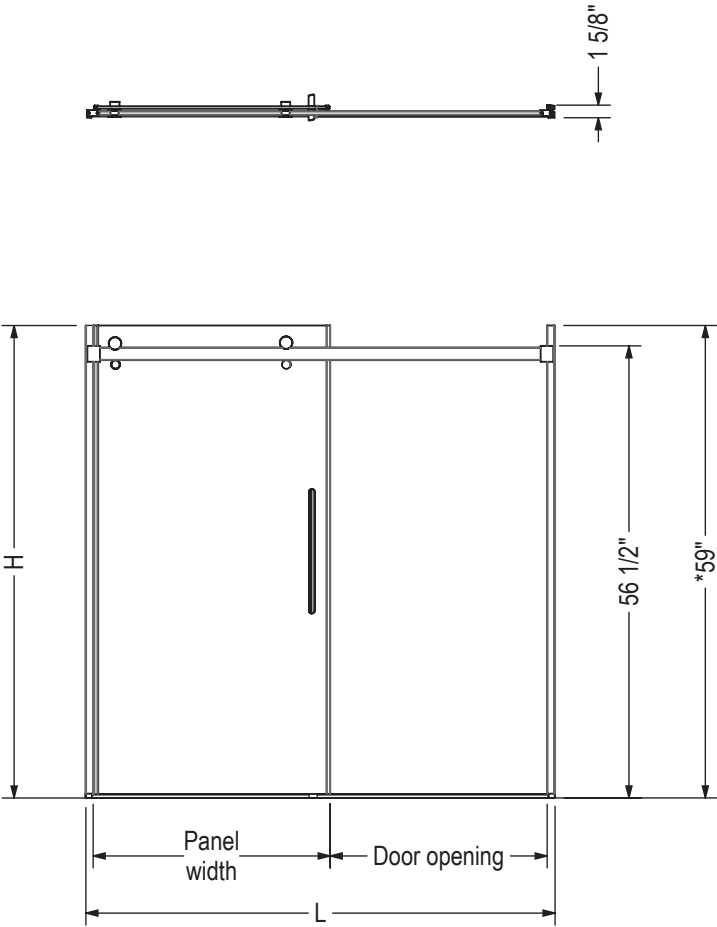
MAAX SUBMITTAL SPECIFICATIONS

Discontinued – Halo  
sliding tub shield 56  
1/2-59 x 59 in. 8 mm

MODEL NUMBER 138402

TECHNICAL DRAWINGS

STANDARD



Tub Door Onel Panel

| Code   | Description                      | H   | L<br>Adjustable | Panel<br>width | Door<br>Opening   | Wall<br>Adjustment |
|--------|----------------------------------|-----|-----------------|----------------|-------------------|--------------------|
| 138402 | Tub Door One Panel 56 1/2" x 60" | 59" | 56 1/2" - 60"   | 32 5/16"       | 22 3/8" - 25 3/4" | 1"                 |

\*Wall jamb height 56 1/2" to 59"

All dimensions are approximate. Structure measurements must be verified against the unit to ensure proper fit.